

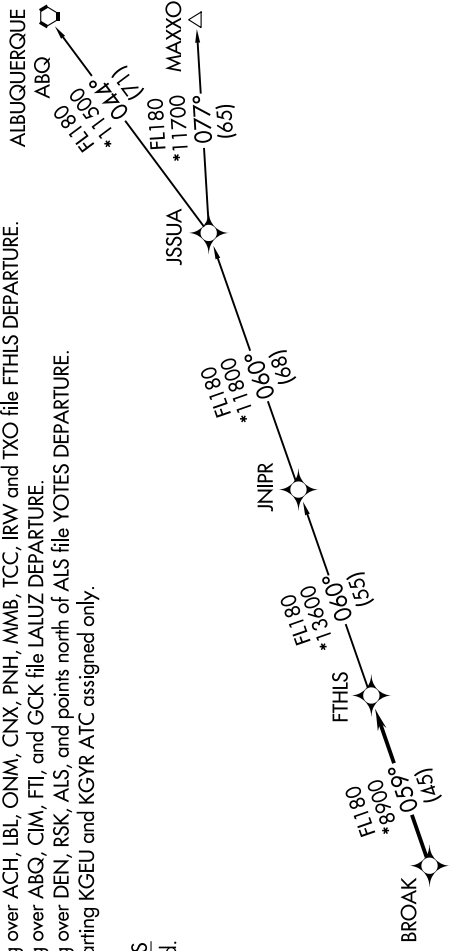
SW-4, 22 FEB 2024 to 21 MAR 2024

**TOP ALTITUDE:
ASSIGNED BY ATC**

NOTE: RNAV 1.
 NOTE: Turbojets and turboprops only.
 NOTE: RADAR required.
 NOTE: GPS required.
 NOTE: ABQ transition ATC assigned only.
 NOTE: Aircraft filing over ACH, LBL, ONM, CNX, PNH, MMB, TCC, IRW, and TXO file FTHLS DEPARTURE.
 NOTE: Aircraft filing over ABQ, CIM, FTI, and GCK file LALUZ DEPARTURE.
 NOTE: Aircraft filing over DEN, RSK, ALS, and points north of ALS file YOTES DEPARTURE.
 NOTE: Aircraft departing KGEU and KGYR ATC assigned only.

ATIS
 118.35
 GND CON
 121.7
 GOODYEAR TOWER ★
 120.1 239.3
 LUKE DEP CON ★
 125.45 263.125
 PHOENIX DEP CON
 120.7 239.0

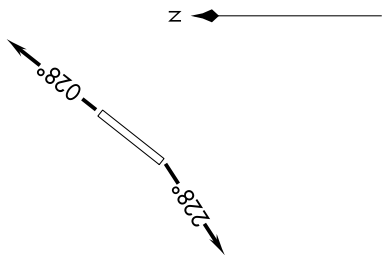
TAKEOFF MINIMUMS
 Rwys 3, 21 : Standard.



DEPARTURE ROUTE DESCRIPTION

TAKEOFF RUNWAY 3: Climb heading 028° or as assigned by ATC, thence, . . .
 TAKEOFF RUNWAY 21: Climb heading 228° or as assigned by ATC, thence, . . .
 . . . expect RADAR vectors to BROAK, then on track 059° to FTHLS, then on (transition).
 Maintain ATC assigned altitude, expect filed altitude 3 minutes after departure.

ALBUQUERQUE TRANSITION (FTHLS6.ABQ)
 JNIPR TRANSITION (FTHLS6.JNIPR)
 MAXXO TRANSITION (FTHLS6.MAXXO)



NOTE: Chart not to scale.

SW-4, 22 FEB 2024 to 21 MAR 2024