

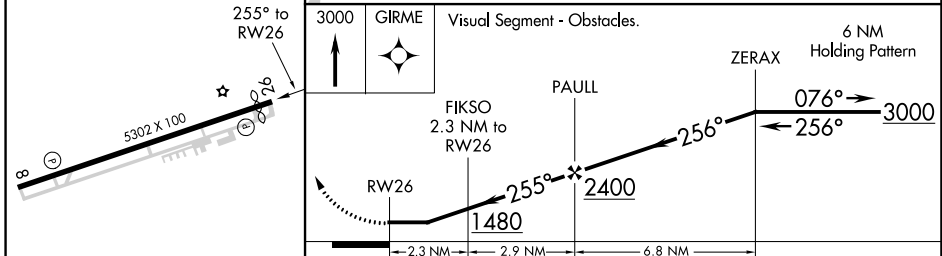
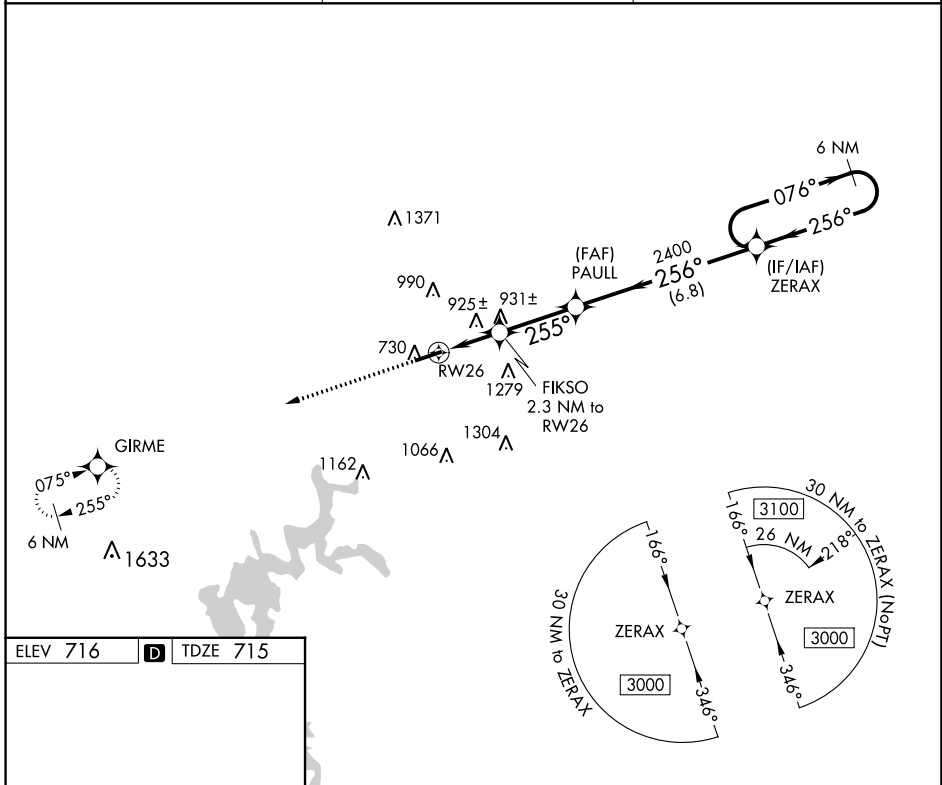
APP CRS	Rwy Idg	<b>5000</b>
<b>255°</b>	TDZE	<b>715</b>
	Apt Elev	<b>716</b>

# RNAV (GPS) RWY 26

GLASGOW MUNI (GLW)

RNP APCH - GPS.		MISSED APPROACH: Climb to 3000 direct GIRME and hold.
<p><b>▼</b> Helicopter visibility reduction below 3/4 SM NA. When local altimeter setting not received, use Bowling Green altimeter setting and increase all MDAs 80 feet; increase LNAV Cat C and D visibility 1/4 SM, and Circling visibility Cat C, D 1/4 SM.</p>		

AWOS-3 <b>118.525</b>	MEMPHIS CENTER <b>132.9 290.3</b>	UNICOM <b>122.8 (CTAF) 0</b>
--------------------------	--------------------------------------	---------------------------------



CATEGORY	A	B	C	D
LNAV MDA	1200-1	485 (500-1)	1200-1 3/8	485 (500-1 3/8)
CIRCLING	1220-1 504 (600-1)	1260-1 544 (600-1)	1580-2 1/2 864 (900-2 1/2)	1580-2 3/4 864 (900-2 3/4)

SE-1, 22 FEB 2024 to 21 MAR 2024

SE-1, 22 FEB 2024 to 21 MAR 2024