

RNAV 1-DME/DME/IRU or GPS.
RADAR required.

**TOP ALTITUDE:
ASSIGNED BY ATC**

ATIS 119.85
CLNC DEL 127.95
GND CON 121.75
EXECUTIVE TOWER 120.9 239.3
MIAMI DEP CON 126.05 251.1

(HROCK2, HROCK) 23110
HROCK TWO DEPARTURE (RNAV)

AL-5942 (FAA)

FORT LAUDERDALE EXEC (FXXE)
FORT LAUDERDALE, FLORIDA

NOTE: Chart not to scale.

TAKEOFF MINIMUMS

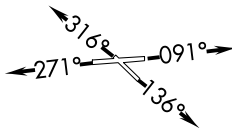
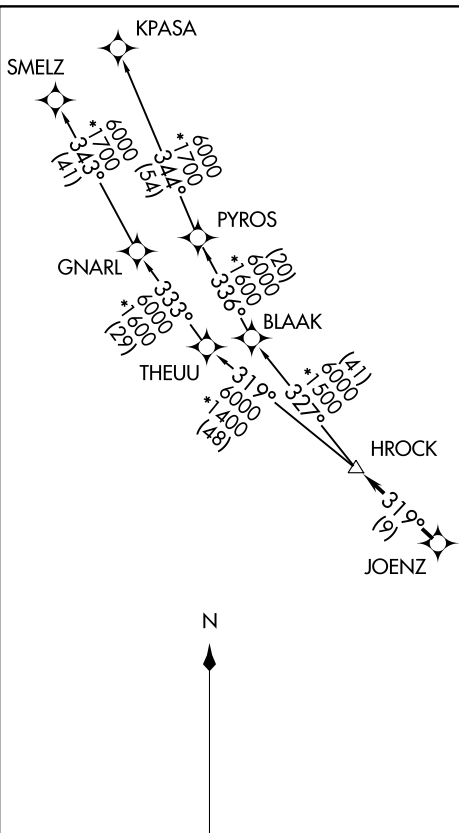
Rwys 9, 13, 31: Standard.

Rwy 27: Standard with minimum climb of 227' per NM to 600.

NOTE: Jet aircraft only.

NOTE: Accelerate to 250K, if unable, advise ATC.

(NARRATIVE ON FOLLOWING PAGE)



HROCK TWO DEPARTURE (RNAV)
(HROCK2, HROCK) 20APR23

FORT LAUDERDALE, FLORIDA
FORT LAUDERDALE EXEC (FXXE)

HROCK TWO DEPARTURE (RNAV)



DEPARTURE ROUTE DESCRIPTION

TAKEOFF RUNWAY 9: Climb on heading 091° or as assigned for RADAR vectors to cross JOENZ, thence. . . .

TAKEOFF RUNWAY 13: Climb on heading 136° or as assigned for RADAR vectors to cross JOENZ, thence. . . .

TAKEOFF RUNWAY 27: Climb on heading 271° or as assigned for RADAR vectors to cross JOENZ, thence. . . .

TAKEOFF RUNWAY 31: Climb on heading 316° or as assigned for RADAR vectors to cross JOENZ, thence. . . .

. . . .on track 319° to HROCK, then on assigned transition. Maintain ATC assigned altitude, expect filed altitude within 10 minutes after departure.

KPASA TRANSITION (HROCK2.KPASA)

SMELZ TRANSITION (HROCK2.SMELZ)

SE-3, 22 FEB 2024 to 21 MAR 2024

SE-3, 22 FEB 2024 to 21 MAR 2024