

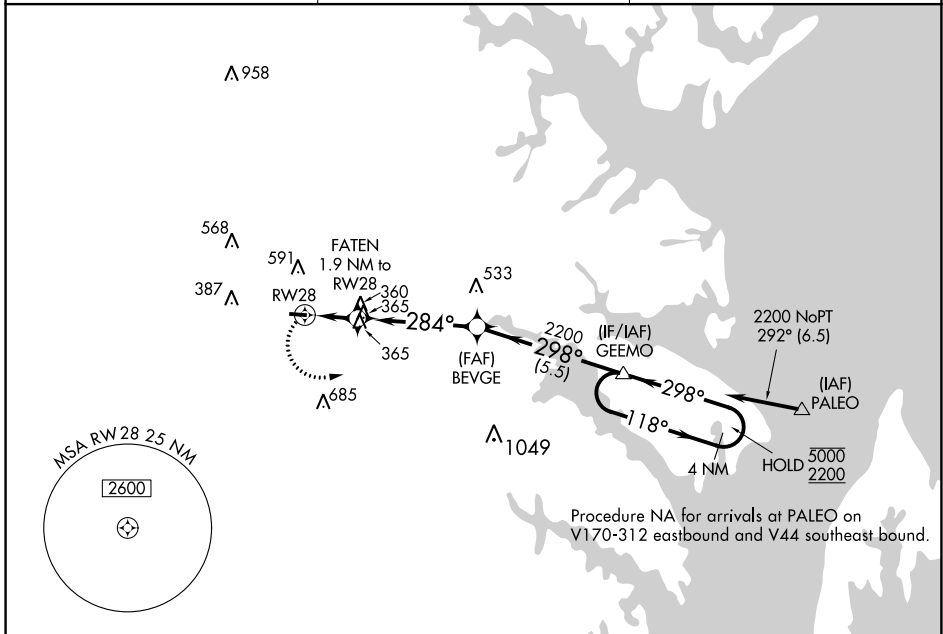
APP CRS <b>284°</b>	Rwy Idg TDZE Apt Elev	<b>3000</b> <b>150</b> <b>150</b>
------------------------	-----------------------------	---

# RNAV (GPS) RWY 28

TIPTON (FME)

RNP APCH - GPS.	MISSED APPROACH: Climbing left turn to 2200 direct GEEMO and hold.
<p><b>▽</b> <b>▲</b> Rwy 28 helicopter visibility reduction below 1 SM NA.</p>	

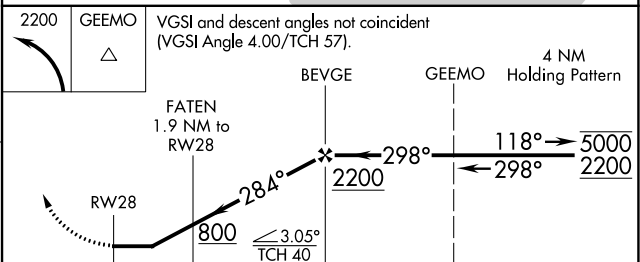
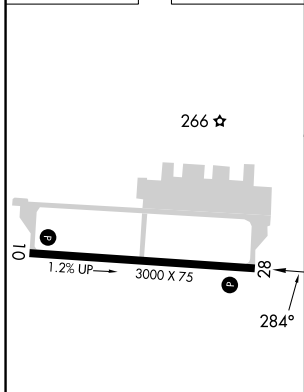
AWOS-3 <b>123.925</b>	POTOMAC APP CON <b>119.7 290.475</b>	UNICOM <b>123.05 (CTAF) 0</b>
--------------------------	---	----------------------------------



NE-3, 22 FEB 2024 to 21 MAR 2024

NE-3, 22 FEB 2024 to 21 MAR 2024

ELEV 150	TDZE 150
----------	----------



2200	GEEMO	VGS1 and descent angles not coincident (VGS1 Angle 4.00/TCH 57).		
		4 NM Holding Pattern		
		FATEN 1.9 NM to RWY 28		
		RWY 28		
800	≤ 3.05°	TCH 40		
		GEEMO 5.5 NM to PALEO		
		PALEO 4 NM to RWY 28		
5000	2200			
CATEGORY	A	B	C	D
LNAV MDA	620-1	470 (500-1)	NA	
CIRCLING	820-1	960-1	NA	
	670 (700-1)	810 (900-1)		