

APP CRS	Rwy Idg	5099
024°	TDZE	1265
	Apt Elev	1265

RNAV (GPS) RWY 2

WILBARGER COUNTY (F05)

RNP APCH.

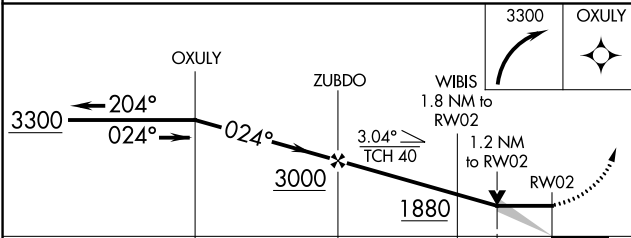
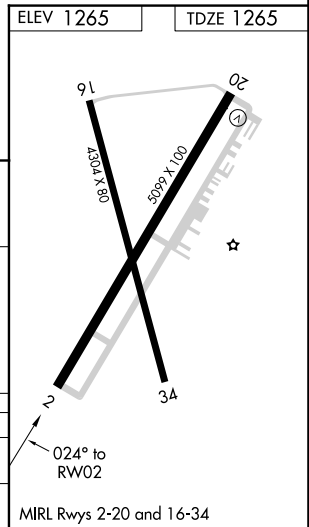
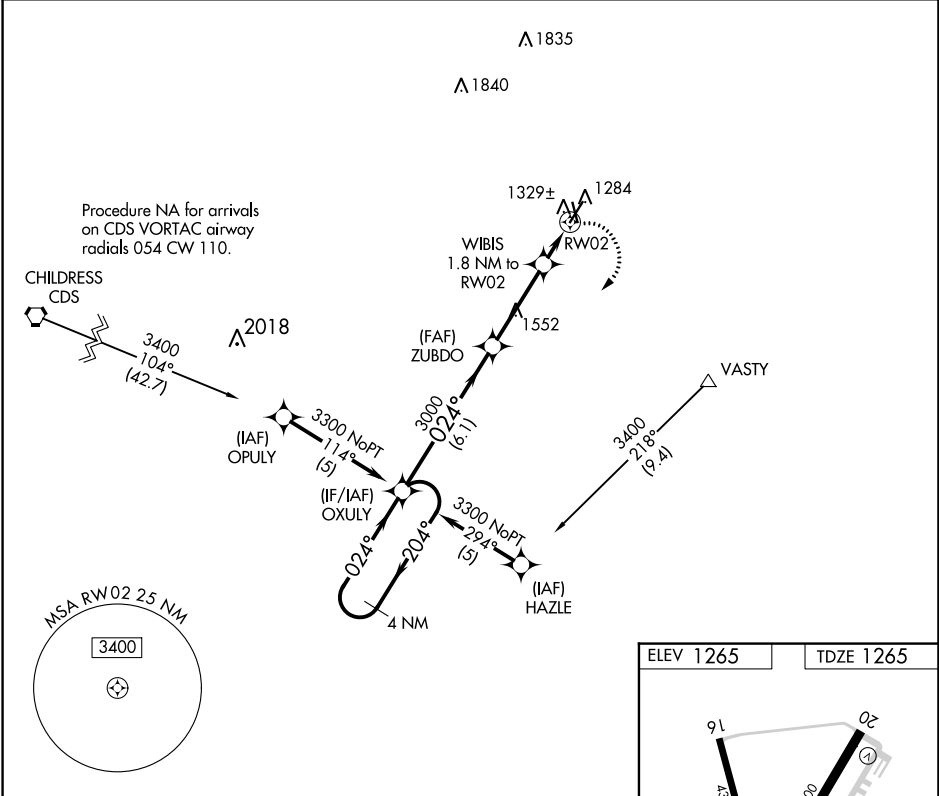
▼ When local altimeter setting not received, use Frederick altimeter setting:
▲ increase all MDA 40 feet. VDP NA when using Frederick altimeter setting.

MISSED APPROACH: Climbing right turn to 3300 direct OXULY and hold.

AWOS-3
118.525

ALTUS APP CON*
125.1 353.7

UNICOM
122.8 (CTAF) 0



CATEGORY	A	B	C	D
RNAV MDA	1680-1	415 (500-1)	1680-1¼ 415 (500-1¼)	NA
CIRCLING	1680-1 415 (500-1)	1720-1 455 (500-1)	1800-1½ 535 (600-1½)	NA

SC-2, 30 NOV 2023 to 28 DEC 2023

SC-2, 30 NOV 2023 to 28 DEC 2023

WAAS CH 63018 W20A	APP CRS 204°	Rwy Idg TDZE Apt Elev	5099 1259 1265
--	------------------------	-----------------------------	---

RNAV (GPS) RWY 20

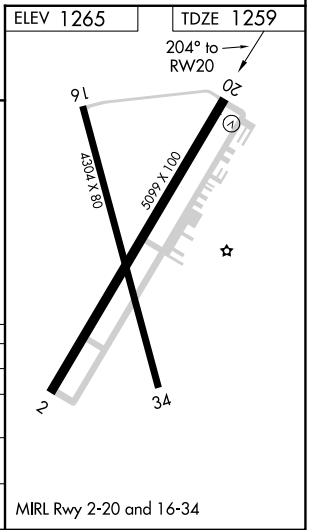
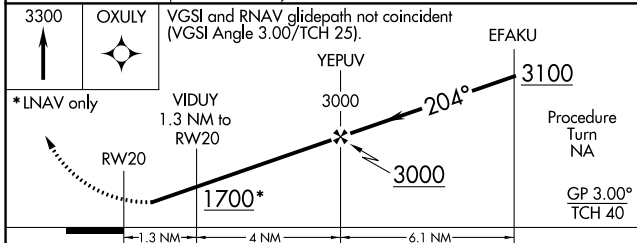
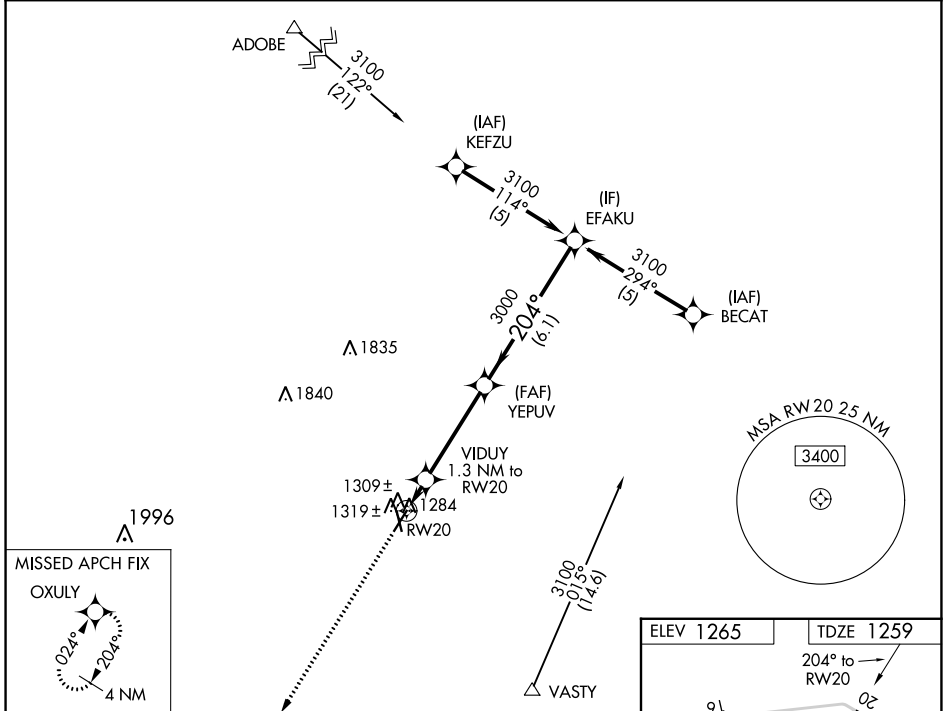
WILBARGER COUNTY (F05)

RNP APCH

▽ Baro-VNAV NA when using Frederick altimeter setting. For uncompensated Baro-VNAV systems, LNAV/VNAV NA below -17°C or above 54°C. Rwy 20 helicopter visibility reduction below 3/4 SM NA. When local altimeter setting not received, use Frederick altimeter setting: increase all DA/MDA 40 feet.

MISSED APPROACH:
Climb to 3300 direct OXULY and hold.

AWOS-3 118.525	ALTUS APP CON* 125.1 353.7	UNICOM 122.8 (CTAF)
--------------------------	--------------------------------------	-------------------------------



CATEGORY	A	B	C	D
LPV DA	1509-1	250 (300-1)		NA
LNAV/VNAV DA	1585-1 1/4	326 (400-1 1/4)		NA
LNAV MDA	1580-1	321 (400-1)		NA
CIRCLING	1660-1 395 (400-1)	1720-1 455 (500-1)	1800-1 1/2 535 (600-1 1/2)	NA

SC-2, 30 NOV 2023 to 28 DEC 2023

SC-2, 30 NOV 2023 to 28 DEC 2023