

WAAS CH <b>56437</b> <b>W07A</b>	APP CRS <b>068°</b>	Rwy Idg <b>4899</b> TDZE <b>661</b> Apt Elev <b>661</b>
--	------------------------	---

# RNAV (GPS) RWY 7

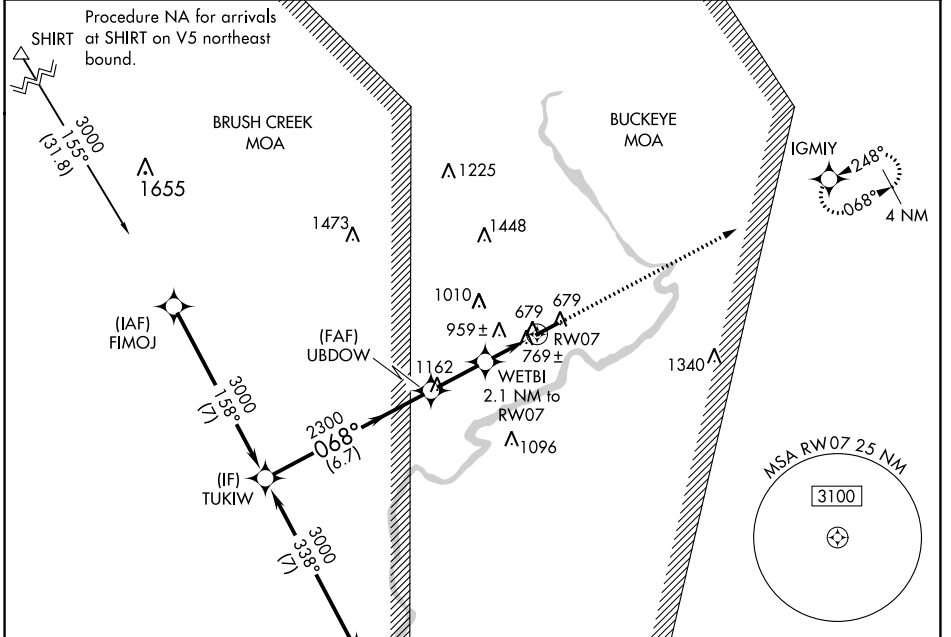
PIKE COUNTY (EOP)

RNP APCH - GPS.

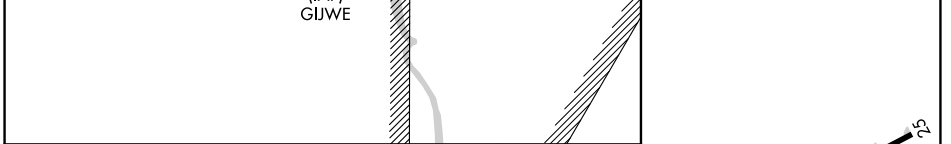
▼ Rwy 7 helicopter visibility reduction below 1 SM NA. Use Greater Portsmouth Rgnl altimeter setting; when not received, use Ross County altimeter setting. Straight-in Rwy 7 NA at night, Circling Rwy 7 NA at night.

▲ MISSED APPROACH: Climb to 3000 direct IGMYY and hold.

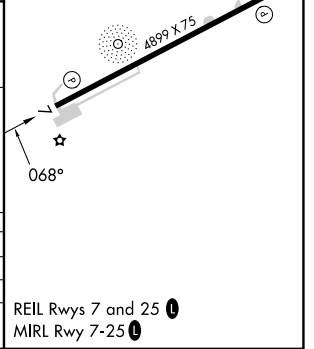
AWOS-3PT <b>121.45</b>	PMH AWOS-3 <b>125.175</b>	INDIANAPOLIS CENTER <b>135.575 290.5</b>	UNICOM <b>123.0 (CTAF) 0</b>
---------------------------	------------------------------	---	---------------------------------



ELEV 661	TDZE 661
----------	----------



CATEGORY	A	B	C	D
LP MDA	1080-1	419 (500-1)	1080-1 $\frac{1}{8}$	419 (500-1 $\frac{1}{8}$ )
LNAV MDA	1340-1	679 (700-1)	1340-1 $\frac{7}{8}$	679 (700-1 $\frac{7}{8}$ )
▲ CIRCLING	1500-1 $\frac{1}{4}$ 839 (900-1 $\frac{1}{4}$ )	1520-1 $\frac{1}{4}$ 859 (900-1 $\frac{1}{4}$ )	1580-2 $\frac{3}{4}$ 919 (1000-2 $\frac{3}{4}$ )	1700-3 1039 (1100-3)



EC-2, 22 FEB 2024 to 21 MAR 2024

EC-2, 22 FEB 2024 to 21 MAR 2024