

WAAS CH 86827 W12A	APP CRS 120°	Rwy Idg TDZE 1452 Apt Elev 1456	5596
--	------------------------	---	-------------

RNAV (GPS) RWY 12

ELY MUNI (E.L.O)

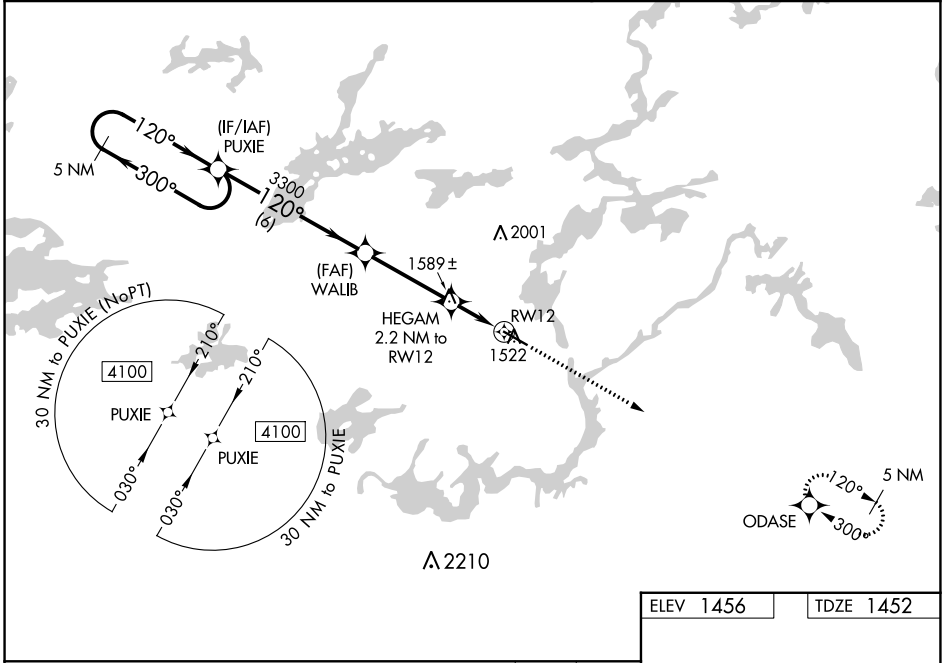
⚠ Baro-VNAV NA when using Cook altimeter setting. For uncompensated Baro-VNAV systems, LNAV/VNAV NA below -17°C (2°F) or above 34°C (93°F). DME/DME RNP-0.3 NA. VDP NA when using Cook altimeter setting. When local altimeter setting not received, use Cook altimeter setting and increase all DA/MDA 100 feet; increase LPV visibility ¼ mile all Cats, LNAV/VNAV visibility ⅓ mile all Cats, and LNAV Cat C and D visibility ¼ mile.

MISSED APPROACH: Climb to 4100 direct ODASE and hold.

AWOS-3PT
132.025

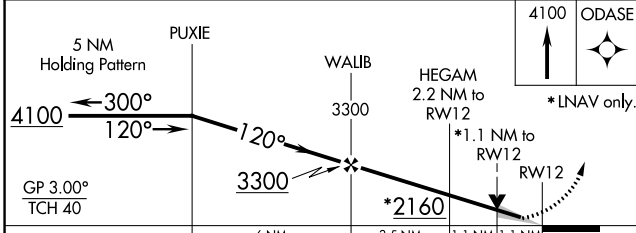
MINNEAPOLIS CENTER
127.9 281.45

UNICOM
122.8 (CTAF) ①

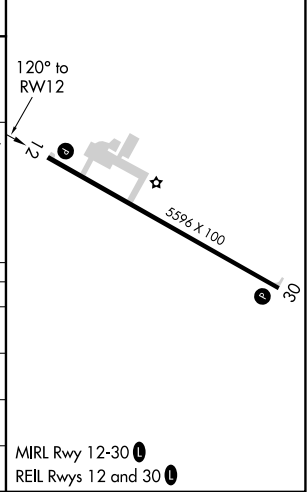


NC-1, 22 FEB 2024 to 21 MAR 2024

NC-1, 22 FEB 2024 to 21 MAR 2024



ELEV 1456	TDZE 1452
-----------	-----------



CATEGORY	A	B	C	D
LPV DA	1652-1		200 (200-1)	
LNAV/ VNAV DA	1726-1		274 (300-1)	
LNAV MDA	1840-1 388 (400-1)		1840-1⅓ 388 (400-1⅓)	
CIRCLING	1920-1 464 (500-1)	1940-1 484 (500-1)	1940-1½ 484 (500-1½)	2360-3 904 (1000-3)

MIRL Rwy 12-30 ①
REIL Rwy 12 and 30 ①