

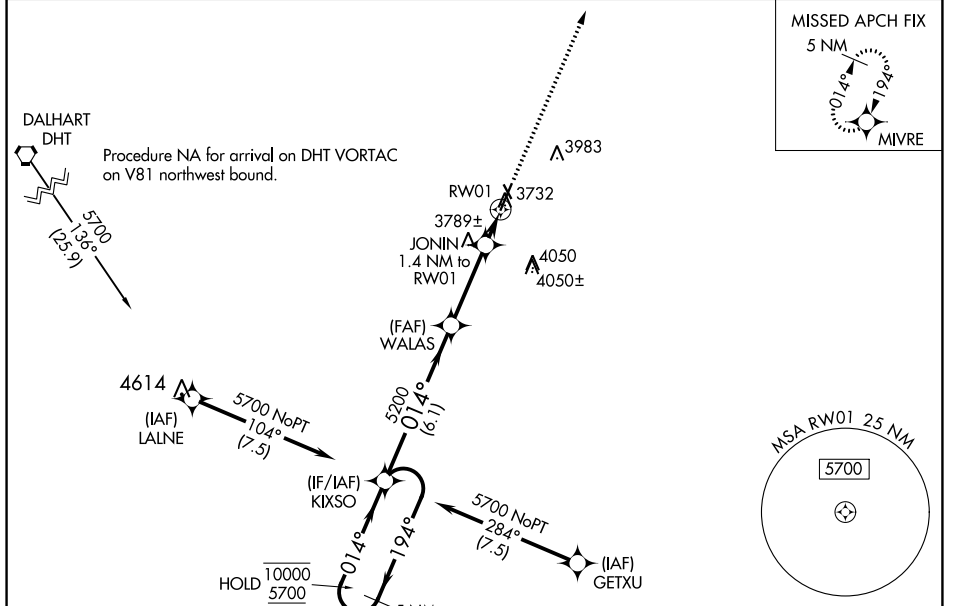
APP CRS	Rwy Idg	<b>6001</b>
<b>014°</b>	TDZE	<b>3706</b>
	Apt Elev	<b>3706</b>

# RNAV (GPS) RWY 1

MOORE COUNTY (DUX)

RNP APCH - GPS.	MISSED APPROACH: Climb to 5700 direct MIVRE and hold.
Circling Rwy 14, 32 NA at night.	

AWOS-3 <b>118.075</b>	ALBUQUERQUE CENTER <b>127.85 285.475</b>	UNICOM <b>122.8 (CTAF) 0</b>
--------------------------	---	---------------------------------



SC-2, 22 FEB 2024 to 21 MAR 2024

SC-2, 22 FEB 2024 to 21 MAR 2024

	ELEV 3706	TDZE 3706		
5 NM Holding Pattern	KIXSO	WALAS		
10000 ← 194°	5700 → 014°	014°		
	5200	4200		
	6.1 NM	3.1 NM		
		0.5 NM		
		0.9 NM		
		0.9 NM to RW01		
		3.00° TCH 50		
		RW01		
CATEGORY	A	B	C	D
LNAV MDA	4040-1 334 (400-1)			
CIRCLING	4100-1 394 (400-1)	4300-1 594 (600-1)	4400-2 694 (700-2)	4400-2¼ 694 (700-2¼)

