

WAAS CH <b>56543</b> <b>W36B</b>	APP CRS <b>357°</b>	Rwy Idg 36L <b>5003</b> 36R <b>6502</b> TDZE <b>636</b> 639 Apt Elev <b>643</b> 643
--	------------------------	---

# RNAV (GPS) RWY 36L

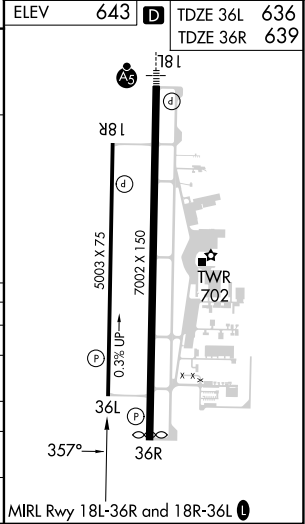
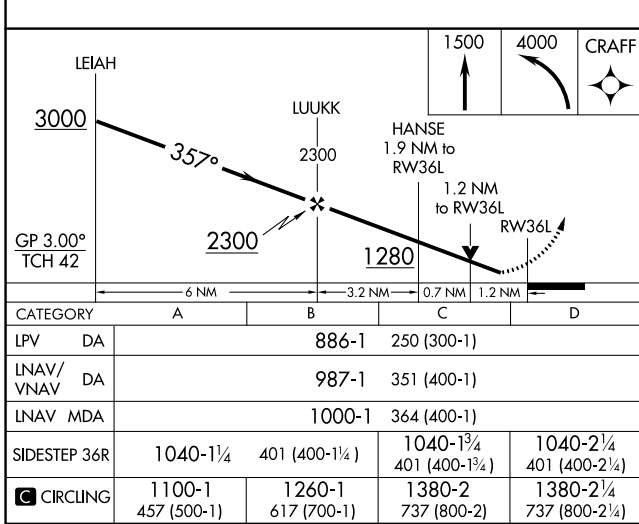
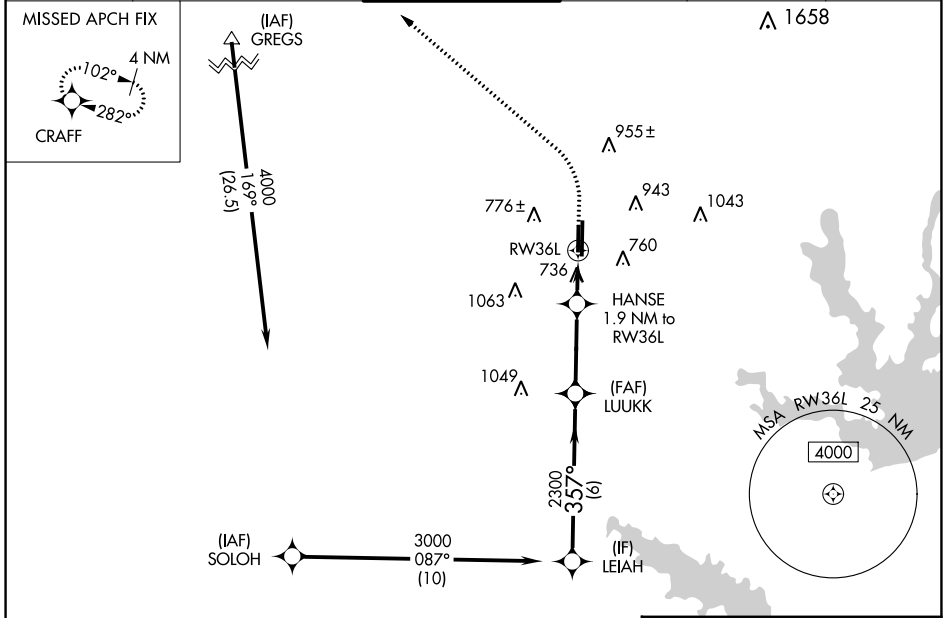
DENTON ENTERPRISE (DTON)

RNP APCH-GPS.

**⚠** Rwy 36L helicopter visibility reduction below 3/4 SM NA. For uncompensated Baro-VNAV systems, LNAV/VNAV NA below -9°C or above 54°C.

MISSED APPROACH: Climb to 1500 then climbing left turn to 4000 direct CRAFT and hold, continue climb-in-hold to 4000.

ATIS <b>119.325</b>	REGIONAL APP CON <b>118.1 306.95</b>	<b>DENTON TOWER ★</b> <b>119.95 (CTAF) 0</b>	GND CON <b>123.95</b>	CLNC DEL <b>123.95</b>	UNICOM <b>122.95</b>
------------------------	---	---	--------------------------	---------------------------	-------------------------



SC-2, 22 FEB 2024 to 21 MAR 2024

SC-2, 22 FEB 2024 to 21 MAR 2024