

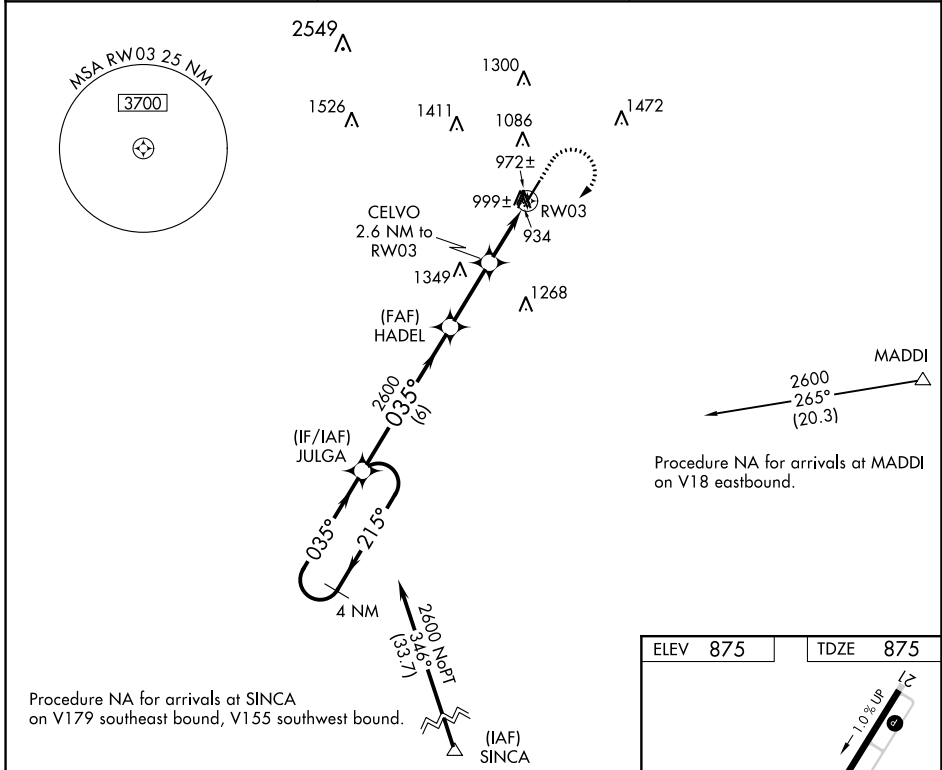
WAAS CH 93523 W03A	APP CRS 035°	Rwy Idg TDZE 875 Apt Elev 875
--	------------------------	---

RNAV (GPS) RWY 3

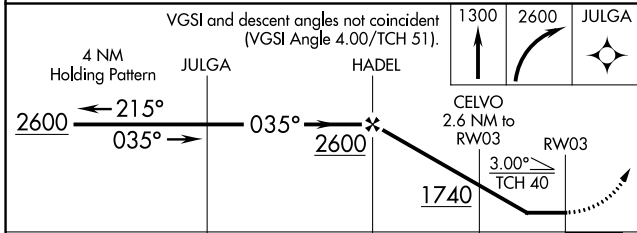
CY NUNNALLY MEML (D73)

RNP APCH.	MISSED APPROACH: Climb to 1300 then climbing right turn to 2600 direct JULGA and hold.
<p>▼ Rwy 3 helicopter visibility reduction below 1 SM NA. When local altimeter not received, use Athens altimeter setting and increase all MDA 60 feet and increase LP, LNAV and Circling Cat C visibility ¼ mile. Procedure NA at night.</p>	

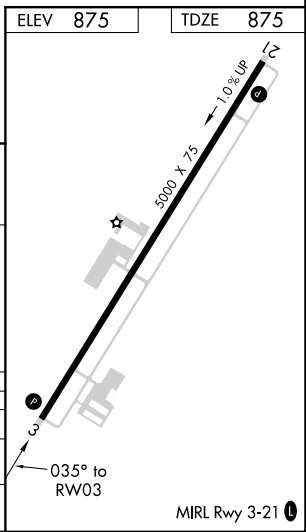
AWOS-3PT 120.825	ATLANTA APP CON 126.975 239.275	CTAF 122.9
----------------------------	---	----------------------



Procedure NA for arrivals at SINCA on V179 southeast bound, V155 southwest bound.



CATEGORY	A	B	C	D
LP MDA	1240-1 365 (400-1)			NA
LNAV MDA	1260-1	385 (400-1)	1260-1½ 385 (400-1½)	NA
CIRCLING	1460-1	585 (600-1)	1580-2 705 (800-2)	NA



SE-4, 22 FEB 2024 to 21 MAR 2024

SE-4, 22 FEB 2024 to 21 MAR 2024