

WAAS CH 97636 W14A	APP CRS 148°	Rwy Idg TDZE Apt Elev	3296 1242 1242
--	------------------------	-----------------------------	---

RNAV (GPS) RWY 14

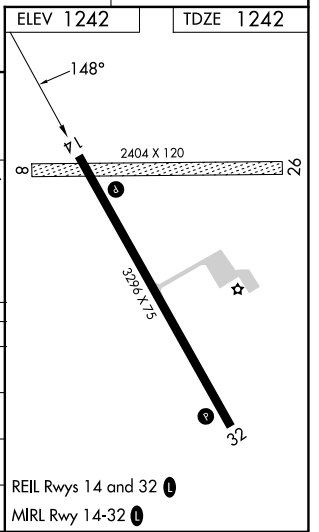
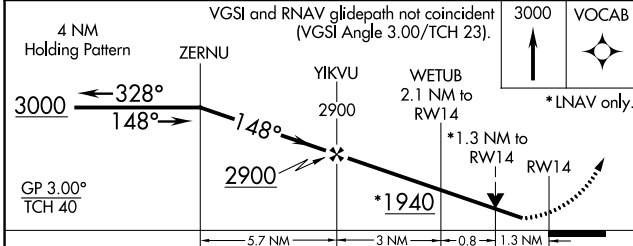
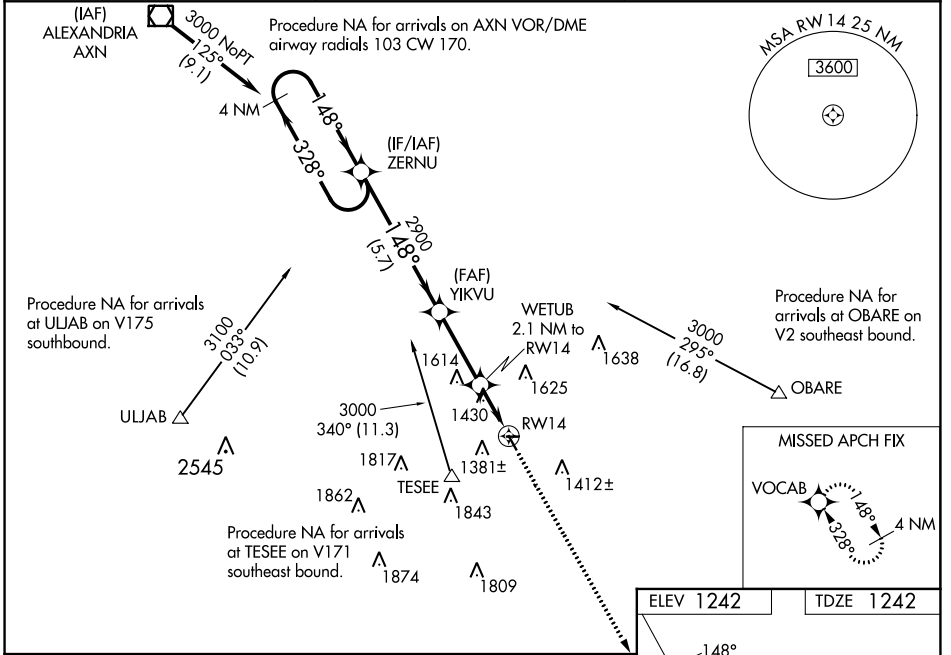
SAUK CENTRE MUNI (D39)

RNP APCH -GPS.

⚠ Baro-VNAV NA when using Glenwood altimeter setting. For uncompensated Baro-VNAV systems, LNAV/VNAV NA below -17°C or above 54°C. VDP NA with Glenwood altimeter setting. When local altimeter setting not received, use Glenwood altimeter setting and increase all DA/MDA 60 feet, increase LNAV/VNAV all Cats visibility 1/8 mile. Rwy 14 helicopter visibility reduction below 3/4 SM NA. Circling NA to Rwy 8 and 26.

MISSED APPROACH: Climb to 3000 direct VOCAB and hold.

AWOS-3 118.475	MINNEAPOLIS CENTER 126.1 269.2	CTAF 122.90
--------------------------	--	-----------------------



CATEGORY	A	B	C	D
LPV DA	1492-1	250 (300-1)		NA
LNAV/VNAV DA	1500-1	258 (300-1)		NA
LNAV MDA	1680-1	438 (500-1)		NA
CIRCLING	1700-1 458 (500-1)	1740-1 498 (500-1)		NA

NC-1, 22 FEB 2024 to 21 MAR 2024

NC-1, 22 FEB 2024 to 21 MAR 2024