

WAAS CH <b>86719</b> <b>W01A</b>	APP CRS <b>012°</b>	Rwy Idg TDZE Apt Elev	<b>5000</b> <b>237</b> <b>245</b>
--	------------------------	-----------------------------	---

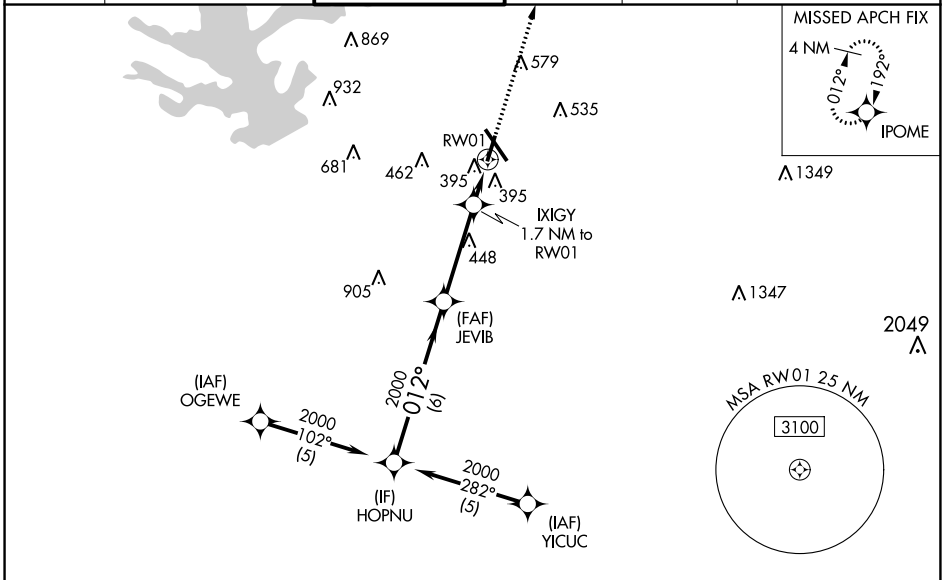
# RNAV (GPS) RWY 1

CONROE/NORTH HOUSTON RGNL (C'X'O)

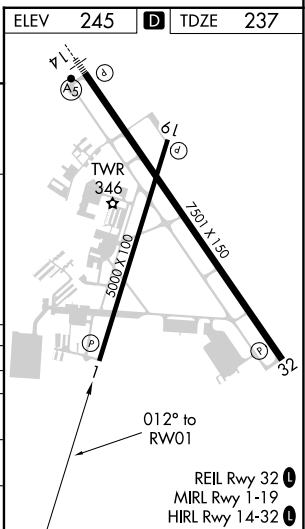
**⚠** For uncompensated Baro-VNAV systems, LNAV/VNAV NA below -15°C (5°F) or above 48°C (118°F). DME/DME RNP-0.3 NA. Rwy 1 helicopter visibility reduction below ¾ SM NA.

MISSED APPROACH: Climb to 2000 direct IPOME and hold.

ATIS <b>118.325</b>	HOUSTON APP CON <b>119.7 281.4</b>	CONROE TOWER ★ <b>124.125 (CTAF) 0</b>	GND CON <b>120.45</b>	CLNC DEL <b>120.45</b>	CLNC DEL <b>119.55</b> (When twr closed)
------------------------	---------------------------------------	---	--------------------------	---------------------------	--



ELEV	245	TDZE	237
<p>HOPNU — 2000 — 012° — JEVIB (2000) — 1.7 NM to IXIGY — RWY01 — 2000</p> <p>GP 3.00° TCH 49</p> <p>6 NM — 3.6 NM — 1.7 NM</p> <p>*820</p> <p>2000 IPOME</p> <p>*LNAV only.</p>			
CATEGORY	A	B	C
LPV DA	521-1		284 (300-1)
LNAV/VNAV DA	651-1½		414 (500-1½)
LNAV MDA	660-1 423 (500-1)		660-1¼ 423 (500-1¼)
CIRCLING	700-1 455 (500-1)		880-1¾ 635 (700-1¾) 960-2¼ 715 (800-2¼)



SC-5, 22 FEB 2024 to 21 MAR 2024

SC-5, 22 FEB 2024 to 21 MAR 2024