

(TJANO1.TJANO) 24025

AL-6552 (FAA)

CASTROVILLE MUNI (CVB)  
CASTROVILLE, TEXAS

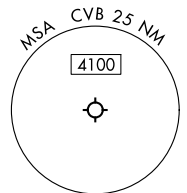
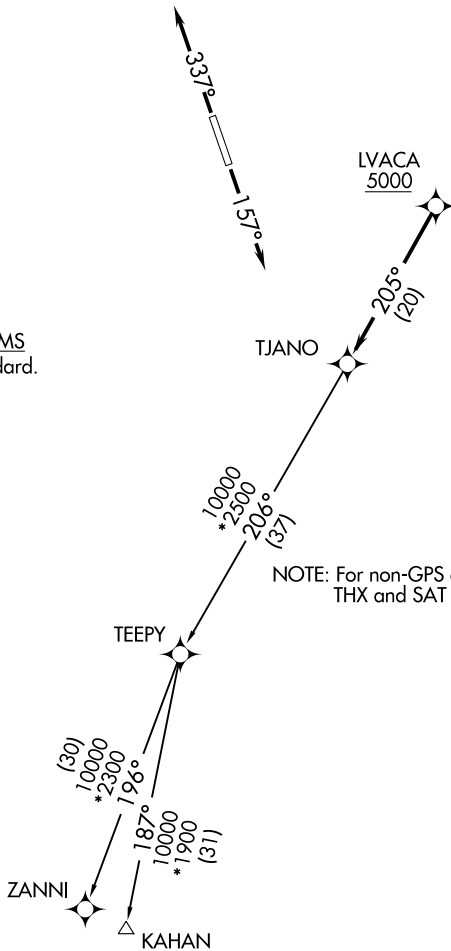
# TJANO ONE DEPARTURE (RNAV)

SAN ANTONIO DEP CON  
118.05 353.5

RNAV 1 - DME/DME IRU or GPS.  
RADAR required.

**TOP ALTITUDE:  
ASSIGNED BY ATC**

TAKEOFF MINIMUMS  
Rwys 16, 34: Standard.



Note: Chart not to scale.

## DEPARTURE ROUTE DESCRIPTION

TAKEOFF RUNWAY 16: Climb on heading 157° or as assigned by ATC, for vectors to LVACA, thence . . .

TAKEOFF RUNWAY 34: Climb on heading 337° or as assigned by ATC, for vectors to LVACA, thence . . .

. . . on track 205° to TJANO, then on Transition. Maintain ATC assigned altitude.

KAHAN TRANSITION (TJANO1.KAHAN)  
ZANNI TRANSITION (TJANO1.ZANNI)

**TJANO ONE DEPARTURE (RNAV)**  
(TJANO1.TJANO) 25JAN24

CASTROVILLE, TEXAS  
CASTROVILLE MUNI (CVB)

SC-3, 22 FEB 2024 to 21 MAR 2024

SC-3, 22 FEB 2024 to 21 MAR 2024