

LOC I-BZF <b>109.5</b>	APP CRS <b>175°</b>	Rwy Idg TDZE Apt Elev	<b>13503</b> <b>1922</b> <b>1922</b>
---------------------------	------------------------	-----------------------------	--

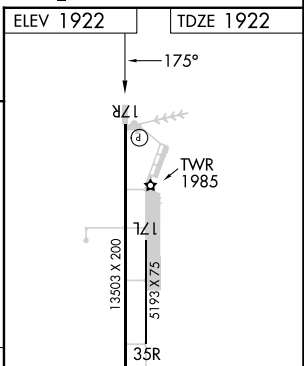
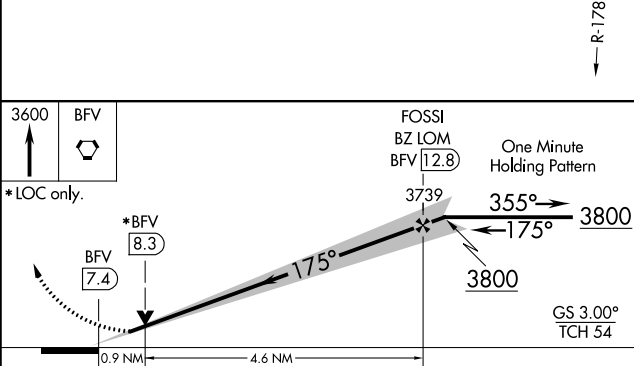
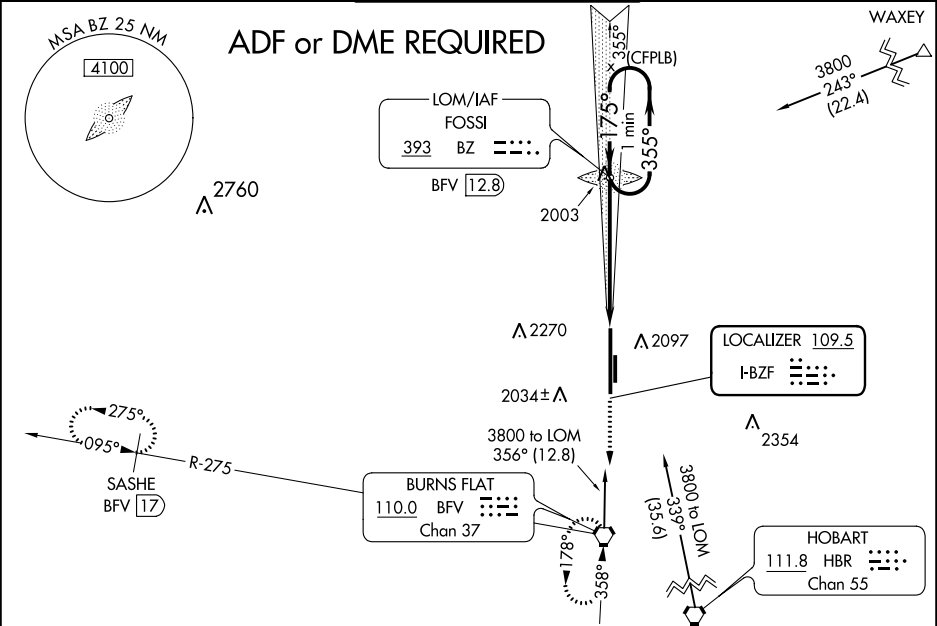
# ILS or LOC RWY 17R

CLINTON/SHERMAN (CSM)

**⚠** Circling NA east of Rwy 17R-35L.

MISSED APPROACH: Climb to 3600 direct BFV VORTAC and hold (TACAN aircraft climb to 3000 then climbing right turn to 5000 on heading 220° and on BFV VORTAC R-275 to SASHE/BFV 17 DME and hold west, left turn, 095° inbound.)

ASOS <b>118.45</b>	FORT WORTH CENTER <b>128.4 269.37</b>	CLINTON/SHERMAN TOWER* <b>119.6 (CTAF) 0 256.9</b>	GND CON <b>121.7 239.0</b>	UNICOM <b>122.95</b>
-----------------------	--	---	-------------------------------	-------------------------



CATEGORY	A	B	C	D	E	
S-ILS 17R	2122-3/4		200 (200-3/4)			
S-LOC 17R	2260-1		338 (400-1)			
<b>C</b> CIRCLING	2340-1 418 (500-1)	2380-1 458 (500-1)	2380-1½ 458 (500-1½)	2620-2¼ 698 (700-2¼)	2620-2½ 698 (700-2½)	
	Knots	60	90	120	150	180
	Min:Sec	5:30	3:40	2:45	2:12	1:50

SC-1, 22 FEB 2024 to 21 MAR 2024

SC-1, 22 FEB 2024 to 21 MAR 2024