

(KWEEN4.KWEEN) 23166

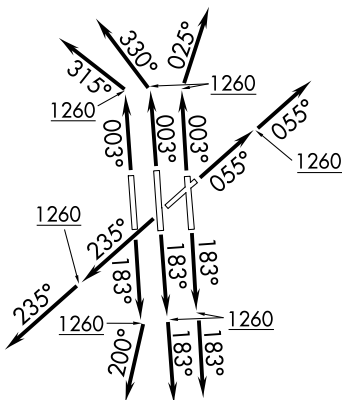
AL-78 (FAA)

CHARLOTTE/DOUGLAS INTL (CLT)  
CHARLOTTE, NORTH CAROLINA

# KWEEN FOUR DEPARTURE (RNAV)

**TOP ALTITUDE:  
8000**

D-ATIS DEP  
132.1  
CLNC DEL  
127.15 348.6  
CPDLC  
GND CON  
121.8 348.6 (WEST)  
121.9 348.6 (EAST)  
CHARLOTTE TOWER  
118.1 257.8 (Rwys 18L-36R)  
126.4 257.8 (Rwy 18C-36C)  
133.35 257.8 (Rwy 18R-36L)  
CHARLOTTE DEP CON  
120.5 257.2 (Rwys 36L/C)  
124.0 307.8 (Rwys 18L/C/R, 36R)



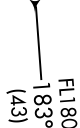
HMMPY



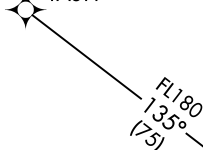
KWEEN



UNJAM



TASTY



PITRW

- NOTE: For turbojets only.
- NOTE: DME/DME/IRU or GPS required.
- NOTE: RNAV 1.
- NOTE: RADAR required.
- NOTE: If unable to accept climb rates, advise ATC on initial contact.
- NOTE: Accelerate to 250K, if unable advise ATC. Upon reaching 10000 MSL, accelerate to and maintain 280K, if unable advise ATC.
- NOTE: Transponder code will be issued via PDC or Charlotte CLNC DEL.

### TAKEOFF MINIMUMS

Rwys 18C/L/R, 23, 36C/L/R: Standard with minimum climb of 500' per NM to 1260.  
Rwy 5: Standard with minimum climb of 500' per NM to 1300.

NOTE: Chart not to scale.

(NARRATIVE ON FOLLOWING PAGE)

# KWEEN FOUR DEPARTURE (RNAV)

(KWEEN4.KWEEN) 03JAN19

CHARLOTTE, NORTH CAROLINA  
CHARLOTTE/DOUGLAS INTL (CLT)

SE-2, 22 FEB 2024 to 21 MAR 2024

SE-2, 22 FEB 2024 to 21 MAR 2024

# KWEEN FOUR DEPARTURE (RNAV)



## DEPARTURE ROUTE DESCRIPTION SEE ADDITIONAL REQUIREMENTS ON AAUP

TAKEOFF RWY 5: Climb heading 055° to 1260, then on heading 055° or as assigned by ATC, expect RADAR vectors to HMMPY, thence. . . .

TAKEOFF RWYS 18C/L: Climb heading 183° to 1260, then on heading 183° or as assigned by ATC, expect RADAR vectors to HMMPY, thence. . . .

TAKEOFF RWY 18R: Climb heading 183° to 1260, then on heading 200° or as assigned by ATC, expect RADAR vectors to HMMPY, thence. . . .

TAKEOFF RWY 23: Climb heading 235° to 1260, then on heading 235° or as assigned by ATC, expect RADAR vectors to HMMPY, thence. . . .

TAKEOFF RWY 36C: Climb heading 003° to 1260, then on heading 330° or as assigned by ATC, expect RADAR vectors to HMMPY, thence. . . .

TAKEOFF RWY 36L: Climb heading 003° to 1260, then on heading 315° or as assigned by ATC, expect RADAR vectors to HMMPY, thence. . . .

TAKEOFF RWY 36R: Climb heading 003° to 1260, then on heading 025° or as assigned by ATC, expect RADAR vectors to HMMPY, thence. . . .

. . . .on track 181° to KWEEN, then on assigned transition. Maintain 8000.  
Expect clearance to filed altitude within 10 minutes after departure.

PITRW TRANSITION (KWEEN4.PITRW)

UNJAM TRANSITION (KWEEN4.UNJAM)

SE-2, 22 FEB 2024 to 21 MAR 2024

SE-2, 22 FEB 2024 to 21 MAR 2024