

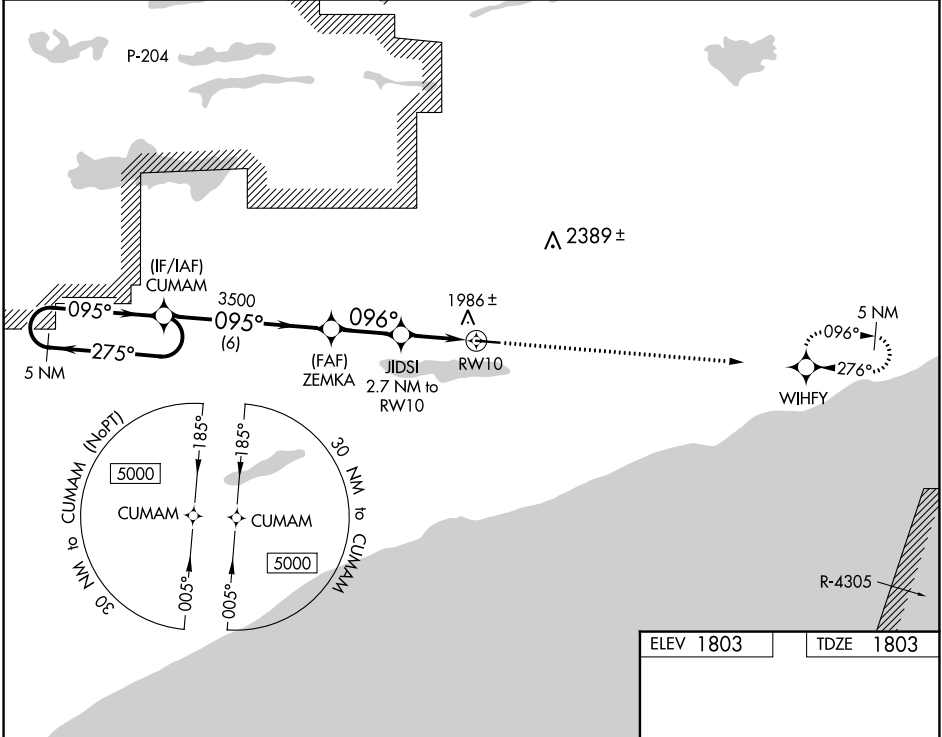
WAAS CH <b>45920</b> <b>W10A</b>	APP CRS <b>096°</b>	Rwy Idg TDZE Apt Elev	<b>5002</b> <b>1803</b> <b>1803</b>
--	------------------------	-----------------------------	---

# RNAV (GPS) RWY 10

GRAND MARAIS/COOK COUNTY (CKC)

RNP APCH.	MISSED APPROACH: Climb to 7000 direct WIHIFY and hold, continue climb-in-hold to 7000.
<p><b>▼</b> Rwy 10 helicopter visibility reduction below 1 SM NA. <b>▲</b> Procedure NA at night.</p>	

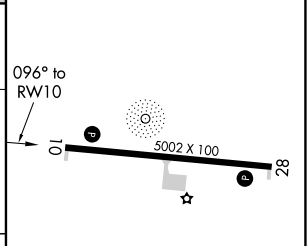
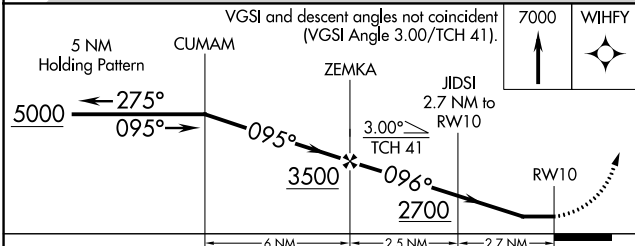
AWOS-3 <b>119.925</b>	MINNEAPOLIS CENTER <b>127.9 281.45</b>	UNICOM <b>122.8 (CTAF) ①</b>
--------------------------	---	---------------------------------



NC-1, 22 FEB 2024 to 21 MAR 2024

NC-1, 22 FEB 2024 to 21 MAR 2024

ELEV 1803	TDZE 1803
-----------	-----------



CATEGORY	A	B	C	D
LP MDA	2200-1	397 (400-1)	2200-1½	397 (400-1½)
RNAV MDA	2240-1	437 (500-1)	2240-1¼	437 (500-1¼)
<b>Ⓢ</b> CIRCLING	2300-1	497 (500-1)	2380-1½ 577 (600-1½)	2640-2¾ 837 (900-2¾)

MIRL Rwy 10-28 ①  
REIL Rwy 10 and 28 ①