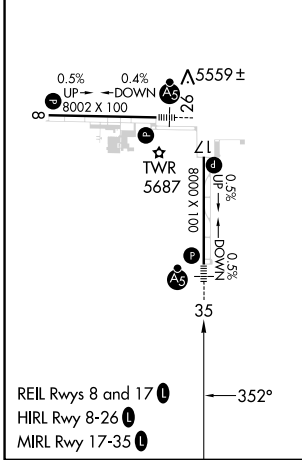
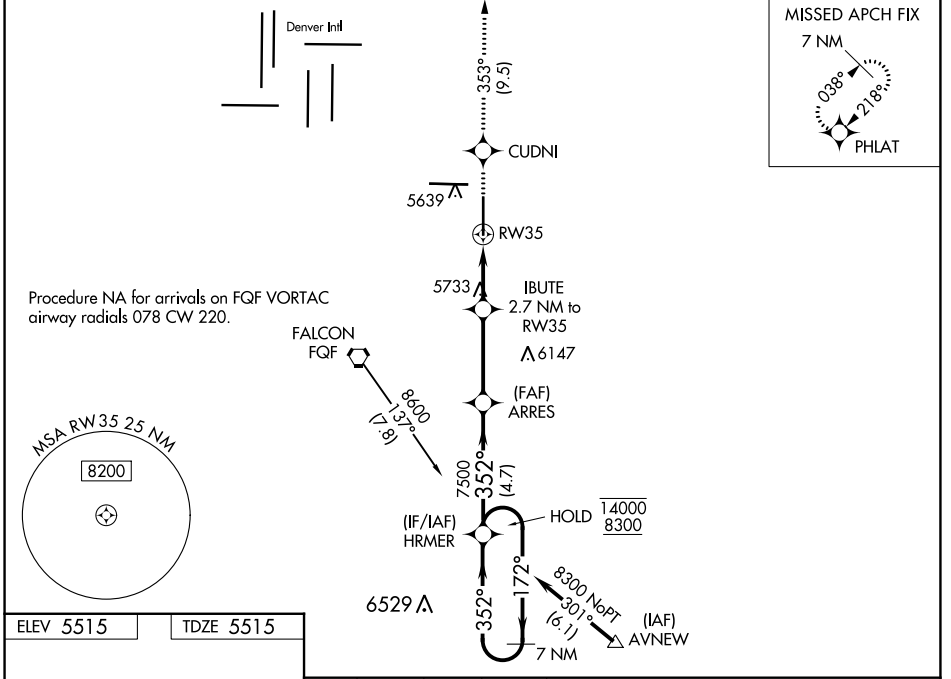


WAAS CH 93809 W35A	APP CRS 352°	Rwy Idg TDZE Apt Elev	8000 5515 5515
--	------------------------	-----------------------------	---

RNAV (GPS) RWY 35

COLORADO AIR AND SPACE PORT (CFO)

RNP APCH. ⚠ For uncompensated Baro-VNAV systems, LNAV/VNAV NA below -25°C or above 46°C. For inop ALS, increase LNAV/VNAV all Cats visibility to 3/8 SM.		MALSR 	MISSED APPROACH: Climb to 8000 direct CUDNI and on track 353° to PHLAT and hold.			
ATIS 119.025	DENVER APP CON 128.25 371.95	SPACE PORT TOWER* 120.2 (CTAF)	GND CON 124.7	CLNC DEL 124.7	CLNC DEL 121.75 (When twr closed)	UNICOM 122.95



8000	CUDNI	PHLAT	HRMER	7 NM Holding Pattern
	tr 353°			
*LNAV only		IBUTE 2.7 NM to RW35	ARRES 7500	172° → 14000 ← 352° 8300
	1.5 NM to RW35	6420	352°	7500
	1.5 NM	1.2 NM	3.4 NM	4.7 NM
CATEGORY	A	B	C	D
LPV DA		5715-1/2	200 (200-1/2)	
LNAV/VNAV DA		5783-1/2	268 (300-1/2)	
LNAV MDA	6040-1/2	525 (600-1/2)	6040-1	525 (600-1)
<input checked="" type="checkbox"/> CIRCLING	6040-1	525 (600-1)	6100-1 1/2 585 (600-1 1/2)	6300-2 1/2 785 (800-2 1/2)

SW-1, 22 FEB 2024 to 21 MAR 2024

SW-1, 22 FEB 2024 to 21 MAR 2024