

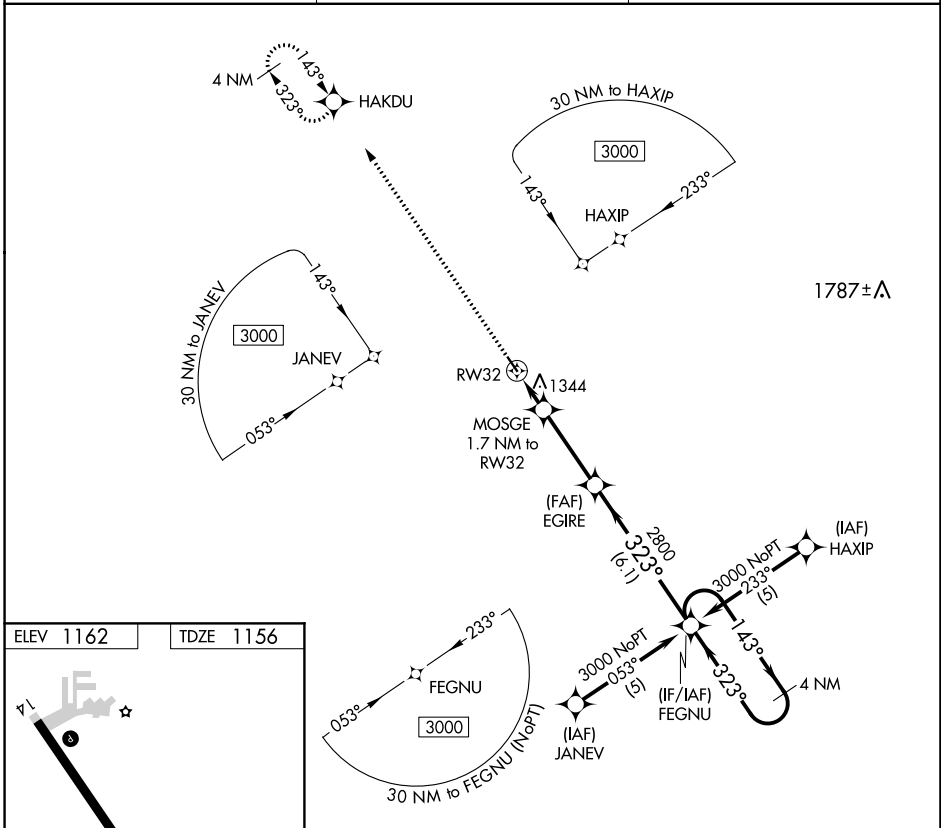
APP CRS <b>323°</b>	Rwy Idg <b>3455</b>
	TDZE <b>1156</b>
	Apt Elev <b>1162</b>

# RNAV (GPS) RWY 32

CLARION MUNI (CAV)

RNP APCH.	MISSED APPROACH: Climb to 3000 direct HAKDU and hold.
<p>▼ When local altimeter setting not received, use Fort Dodge altimeter setting and increase all MDA 60 feet. Rwy 32 helicopter visibility reduction below ¼ SM NA.</p> <p>▲</p>	

AWOS-3 <b>126.575</b>	MINNEAPOLIS CENTER <b>134.0 288.3</b>	UNICOM <b>122.8 (CTAF) 0</b>
--------------------------	--	---------------------------------



ELEV 1162	TDZE 1156
-----------	-----------

REIL Rwy 14 and 32 0  
MIRL Rwy 14-32 0

3000 HAKDU	VGSi and descent angles not coincident (VGSi Angle 3.00/TCH 43).		FEGNU	4 NM Holding Pattern
EGIRE	MOSGE 1.7 NM to RW32	3.04° TCH 40	EGIRE	3000
RW32	1.7	3.3 NM	6.1 NM	1740
CATEGORY	A	B	C	D
LNAV MDA	1600-1 444 (500-1)		NA	

NC-3, 22 FEB 2024 to 21 MAR 2024

NC-3, 22 FEB 2024 to 21 MAR 2024