

LOC I-BAL 109.7	APP CRS 105°	Rwy ldg 9953
		TDZE 143
		Apt Elev 143

BALTIMORE/ **ILS RWY 10** (CAT II & III)
WASHINGTON INTL THURGOOD MARSHALL (BWI)

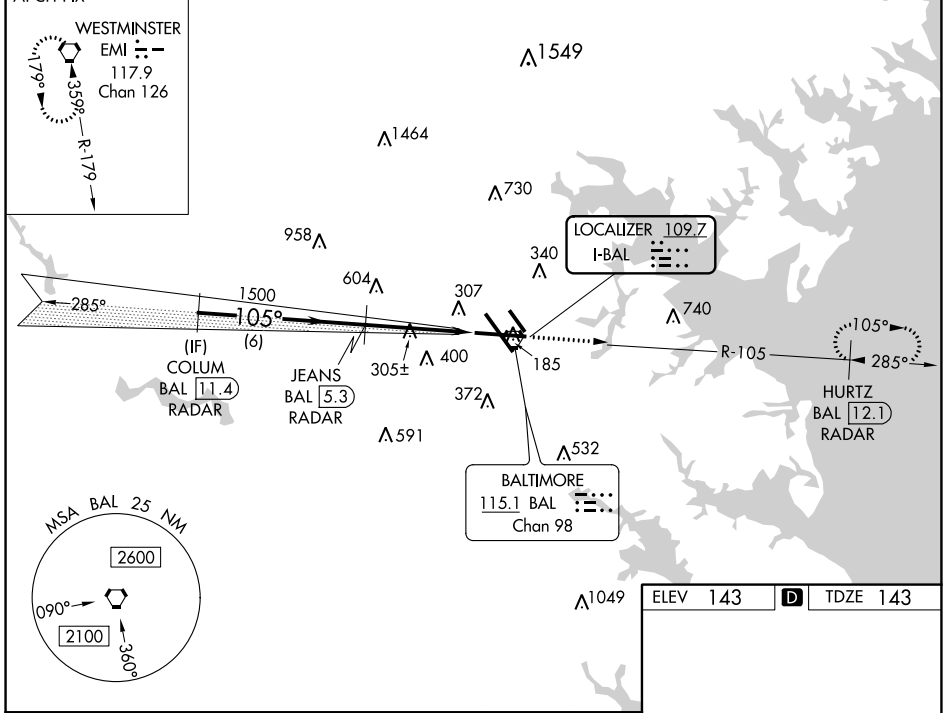
RADAR required for procedure entry.
DME required.

ALSIF-2
A

MISSED APPROACH: Climb to 2500 on BAL VORTAC R-105 to HURTZ/BAL 12.1 DME/RADAR and hold.

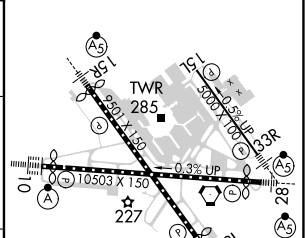
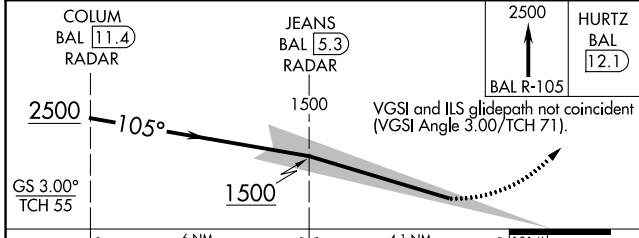
D-ATIS 115.1 127.8	POTOMAC APP CON 119.0 282.275 (020°-100°) 119.7 290.475 (131°-180°) 124.55 317.425 (101°-130°) 128.7 307.9 (181°-019°)	BALTIMORE TOWER 119.4 257.8	GND CON 121.9	CLNC DEL 118.05
------------------------------	--	---------------------------------------	-------------------------	---------------------------

ALTERNATE MISSED APCH FIX CPDLC



NE-3, 22 FEB 2024 to 21 MAR 2024

NE-3, 22 FEB 2024 to 21 MAR 2024



CATEGORY	A	B	C	D
S-ILS 10	CAT II RA 102/12 100 DA 243			
S-ILS 10	CAT III RVR 06			

CATEGORY II & III ILS - SPECIAL AIRCREW & AIRCRAFT CERTIFICATION REQUIRED

TDZ/CL Rws 10 and 33L
REIL Rws 15L and 33R
HIRL all Rws

ILS RWY 10 (CAT II & III)