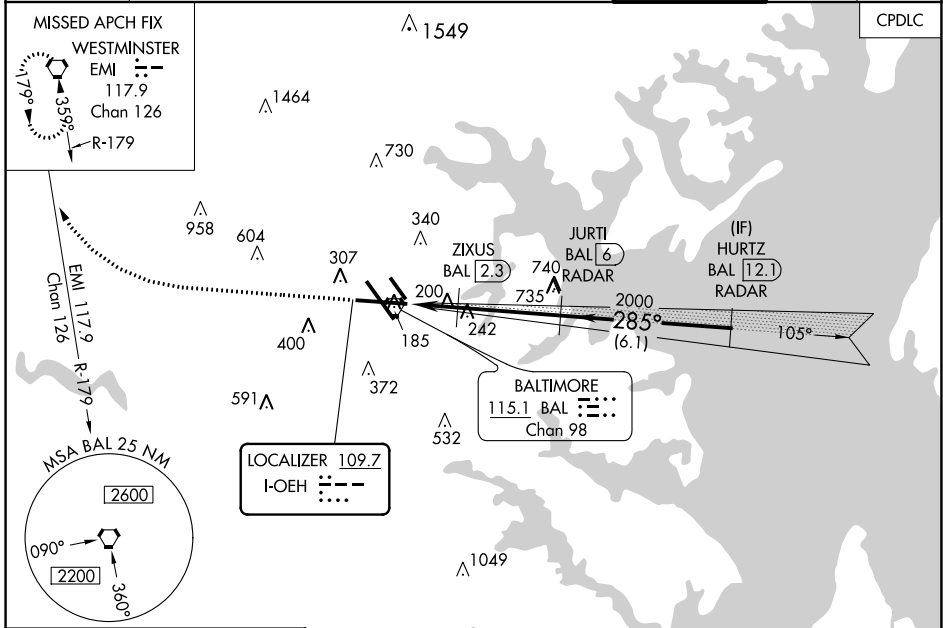


LOC I-OEH	APP CRS	Rwy Idg	9803
109.7	285°	TDZE	143
		Apt Elev	143

BALTIMORE/
WASHINGTON INTL THURGOOD MARSHALL (BWI)

ILS or LOC RWY 28

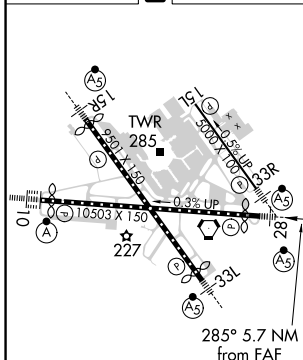
DME or RADAR required.		MALSR	MISSED APPROACH: Climb to 1500 then climbing right turn to 2600 on heading 305° and EMI VORTAC R-179 to EMI VORTAC and hold.	
▼ For inop ALS, increase S-LOC 28 Cat C/D visibility to 1½ SM, and increase ZIXUS fix S-LOC 28 Cat C/D visibility to RVR 4500. ▲ **RVR 1800 authorized with use of FD or AP or HUD to DA.				
D-ATIS	POTOMAC APP CON	BALTIMORE TOWER	GND CON	CLNC DEL
115.1 127.8	119.0 282.275 (020°-100°) 119.7 290.475 (131°-180°) 124.55 317.425 (101°-130°) 128.7 307.9 (181°-019°)	119.4 257.8	121.9	118.05



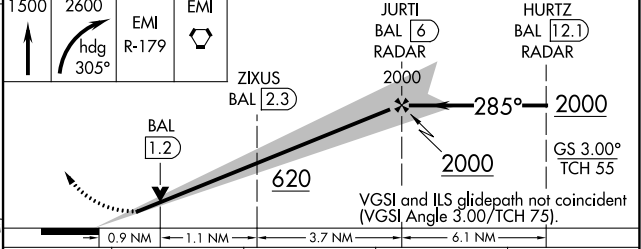
NE-3, 22 FEB 2024 to 21 MAR 2024

NE-3, 22 FEB 2024 to 21 MAR 2024

ELEV 143	D	TDZE 143
-----------------	----------	-----------------



FAF to MAP 5.7 NM					
Knots	60	90	120	150	180
Min:Sec	5:42	3:48	2:51	2:17	1:54



CATEGORY	A	B	C	D
S-ILS 28**	343/24 200 (200-½)			
S-LOC 28	620/24	477 (500-½)	620/50	477 (500-1)
C CIRCLING	640-1 497 (500-1)	660-1 517 (600-1)	700-1½ 557 (600-1½)	860-2¼ 717 (800-2¼)
ZIXUS FIX MINIMUMS (DME REQUIRED)				
S-LOC 28	460/24 317 (400-½)			
C CIRCLING	640-1 497 (500-1)	660-1 517 (600-1)	700-1½ 557 (600-1½)	860-2¼ 717 (800-2¼)

ILS or LOC RWY 28