

| | | |
|--|------------------------|---|
| WAAS CH 53500 W11A | APP CRS 110° | Rwy Idg 5480 TDZE 145 Apt Elev 145 |
|--|------------------------|---|

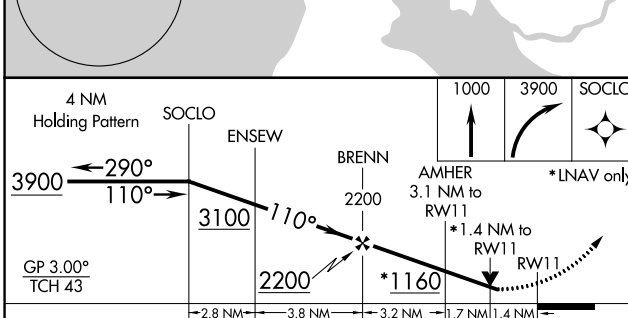
RNAV (GPS) RWY 11

SKAGIT RGNL (BVS)

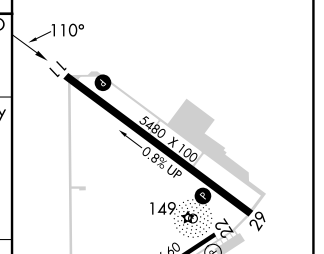
⚠ Circling to Rwy 04 NA at night. For uncompensated Baro-VNAV systems, LNAV/VNAV NA below -15°C (5°F) or above 54°C (130°F). Baro-VNAV and VDP NA when using Friday Harbor altimeter setting. DME/DME RNP-0.3 NA. When local altimeter setting not received use Friday Harbor altimeter setting: increase LPV DA to 561 feet, LNAV/VNAV DA to 710 feet and all Cats visibilities ¼ SM; increase all MDA 60 feet and Cats C and D visibility ¼ SM. Helicopter visibility reduction below ¾ SM NA.

MISSED APPROACH: Climb to 1000 then climbing right turn to 3900 direct SOCLO and hold, continue climb-in-hold to 3900.

| | | |
|--------------------------|---------------------------------------|---------------------------------|
| AWOS-3 121.125 | WHIDBEY APP CON 120.7 270.8 | UNICOM 123.075 (CTAF) |
|--------------------------|---------------------------------------|---------------------------------|



| | |
|----------|----------|
| ELEV 145 | TDZE 145 |
|----------|----------|



| CATEGORY | A | B | C | D |
|--------------|----------------------|----------------------|------------------------|-------------------------|
| LPV DA | 500-1¼ | | 355 (400-1¼) | |
| LNAV/VNAV DA | 649-1¾ | | 504 (600-1¾) | |
| LNAV MDA | 620-1 | 475 (500-1) | 620-1¾ 475 (500-1¾) | 700-1⅝ 555 (600-1⅝) |
| CIRCLING | 680-1 535 (600-1) | 700-1 555 (600-1) | 700-1½ 555 (600-1½) | 1000-2¾ 855 (900-2¾) |

LURL Rwy 4-22 **Ⓡ**
 REIL Rws 11 and 29 **Ⓡ**
 MRL Rwy 11-29 **Ⓡ**

NW-1, 22 FEB 2024 to 21 MAR 2024

NW-1, 22 FEB 2024 to 21 MAR 2024