

WAAS CH 61220 W05A	APP CRS 047°	Rwy Idg 10004 TDZE 952 Apt Elev 952
--	------------------------	--

RNAV (GPS) RWY 5L

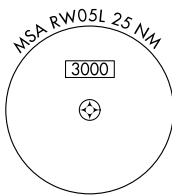
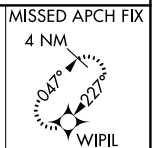
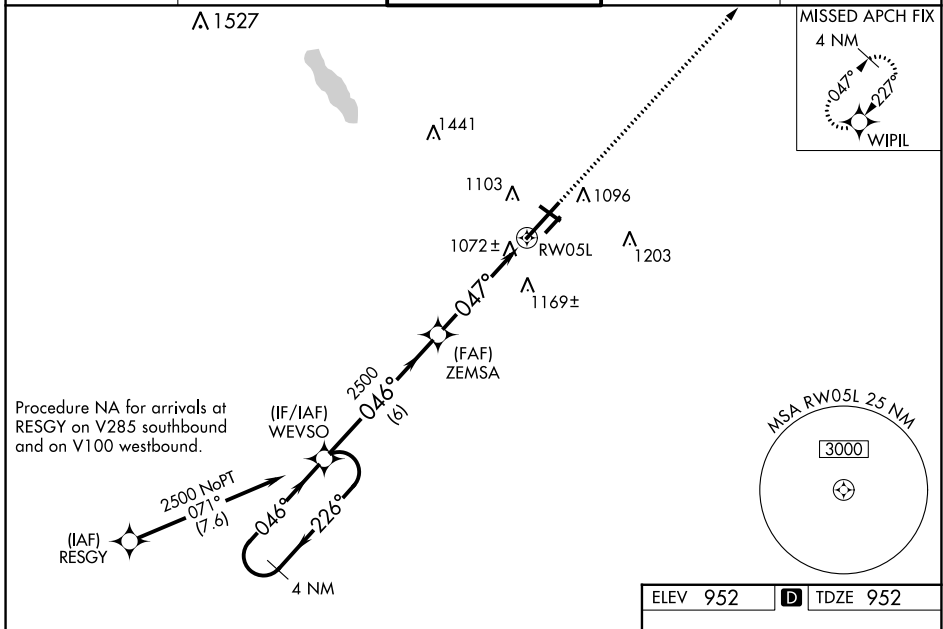
BATTLE CREEK EXEC AT KELLOGG FLD (BTL)

RNP APCH:

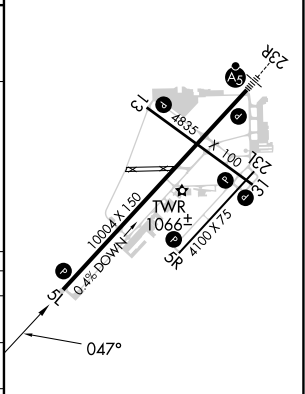
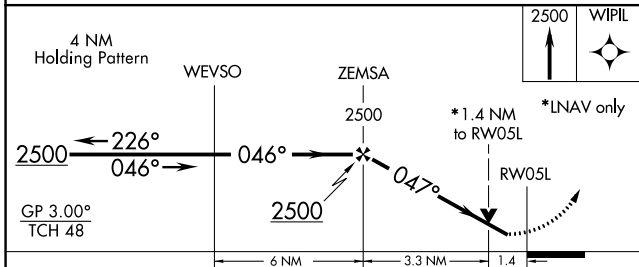
▼ For uncompensated Baro-VNAV systems, LNAV/VNAV NA below -16°C or above 37°C.
 ▲ Rwy 5L helicopter visibility reduction below ¾ SM NA. When local altimeter setting not received, use Grand Rapids altimeter setting: increase all DAs 106 feet and all visibilities ¾ SM; increase all MDAs 120 feet and increase LNAV Cats C and D visibility ¾ SM and Circling Cat C visibility ½ SM and Cat D visibility ¼ SM. VDP and Baro-VNAV NA when using Grand Rapids altimeter setting. Circling Rwy 31 NA at night. Circling NA to Rwys 5R and 23L.

MISSED APPROACH:
Climb to 2500 direct
WIPIL and hold.

ATIS 128.325	GREAT LAKES APP CON* 119.2 239.25	BATTLE CREEK TOWER* 126.825 (CTAF)	GND CON 121.7	UNICOM 122.95
------------------------	---	--	-------------------------	-------------------------



ELEV 952	D TDZE 952
----------	-------------------



CATEGORY	A	B	C	D
LPV DA		1317-1¼	365 (400-1¼)	
LNAV/VNAV DA		1253-1	301 (400-1)	
LNAV MDA	1440-1	488 (500-1)	1440-1¾	488 (500-1¾)
C CIRCLING	1440-1 488 (500-1)	1480-1 528 (600-1)	1520-1½ 568 (600-1½)	1520-2 568 (600-2)

HIRL Rwy 5L-23R
 MRL Rwy 13-31 and 5R-23L
 REIL Rws 5L, 5R, 13, 23L and 31

EC-1, 22 FEB 2024 to 21 MAR 2024

EC-1, 22 FEB 2024 to 21 MAR 2024