

APP CRS	Rwy Idg	4887
175°	TDZE	707
	Apt Elev	719

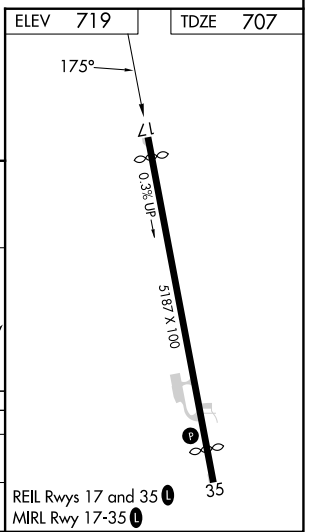
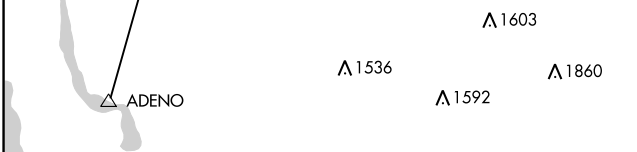
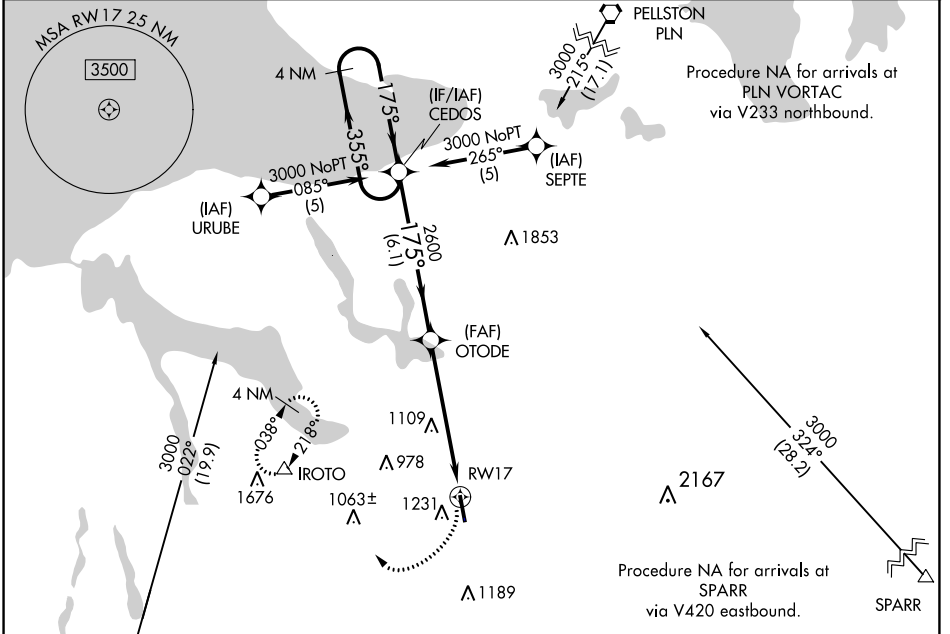
RNAV (GPS) RWY 17

BOYNE MOUNTAIN (BFA)

RNP APCH. **NA** Circling NA west of Rwy 17-35. Use Bellaire altimeter setting; when not received, use Pellston altimeter setting and increase all MDAs 20 feet and increase LNAV Cat A visibility ¼ SM. Rwy 17 helicopter visibility reduction below 1 SM NA. Procedure NA at night.

MISSED APPROACH: Climbing right turn to 3000 direct IROTO and hold.

AWOS-3PT 118.675	MINNEAPOLIS CENTER 134.6 354.05	UNICOM 122.8 (CTAF)	122.85
----------------------------	---	-------------------------------	---------------



CATEGORY	A	B	C	D
LNAV MDA	1580 - 1 873 (900-1)	1580 - 1¼ 873 (900-1¼)	1580 - 2½ 873 (900-2½)	1580 - 2¾ 873 (900-2¾)
CIRCLING	1580 - 1¼ 861 (900-1¼)	1760 - 3 1041 (1100-3)	1880 - 3 1161 (1200-3)	

REIL Rwy 17 and 35	35
MIRL Rwy 17-35	35

EC-1, 22 FEB 2024 to 21 MAR 2024

EC-1, 22 FEB 2024 to 21 MAR 2024