

APP CRS	Rwy ldg TDZE	N/A
166°	Apt Elev	7838

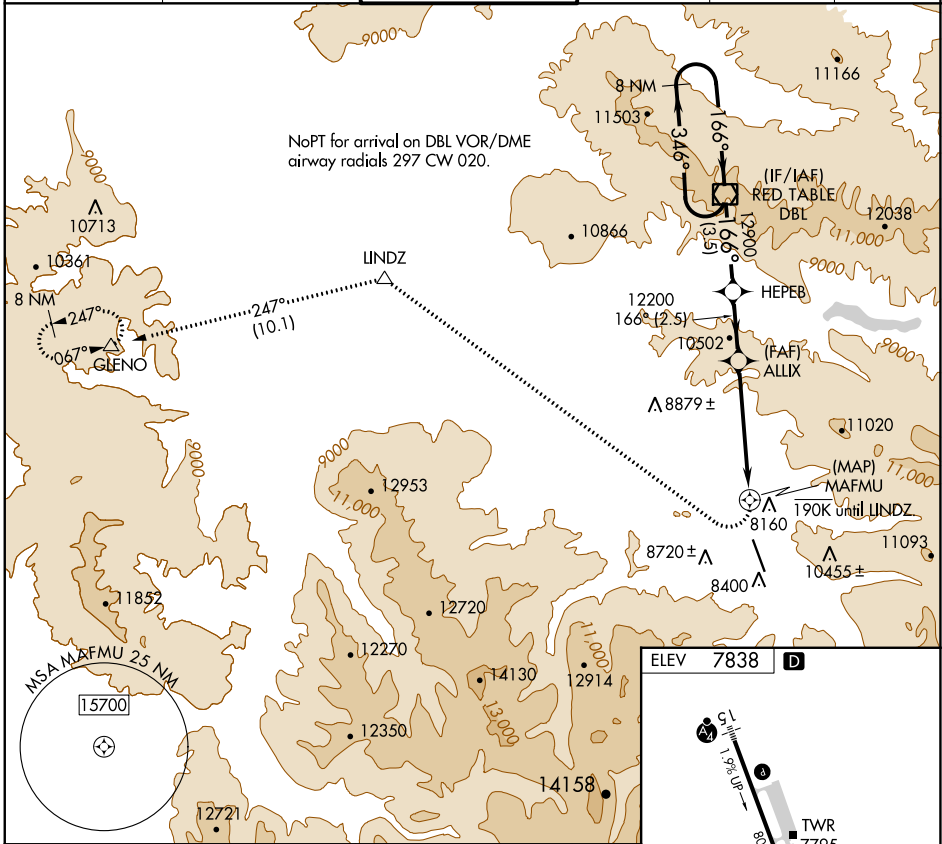
RNAV (GPS)-F

ASPEN-PITKIN COUNTY/SARDY FLD (A5E)

When local altimeter setting not received, procedure NA.
 DME/DME RNP-0.3 NA. Visibility reduction by helicopters NA.
 Procedure NA at night. Circling NA for Cat C southwest of Rwy 15-33.

MISSED APPROACH: Climbing right turn to 14000 direct LINDZ and on track 247° to GLENO and hold.

ATIS	ASPEN APP CON *	ASPEN TOWER *	GND CON	CLNC DEL	UNICOM
120.4	123.8 288.3	118.85 (CTAF) 288.3	121.9	123.75	122.95



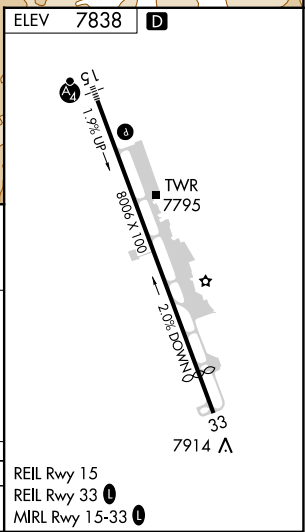
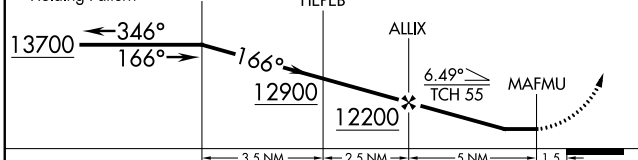
SW-1, 22 FEB 2024 to 21 MAR 2024

SW-1, 22 FEB 2024 to 21 MAR 2024

VGSI and descent angles not coincident (VGSI Angle 3.50/TCH 55).

14000	LINDZ	tr 247°	GLENO
	△		△

8 NM Holding Pattern DBL VOR/DME HEPEB



CATEGORY	A	B	C	D
CIRCLING	10200-1¼ 2362 (2400-1¼)	10220-1¾ 2382 (2400-1¾)	10960-3 3122 (3200-3)	NA