

(INDIE8.INDIE) 21336

AL-6032 (FAA)

WHARTON RGNL (A.R.M)

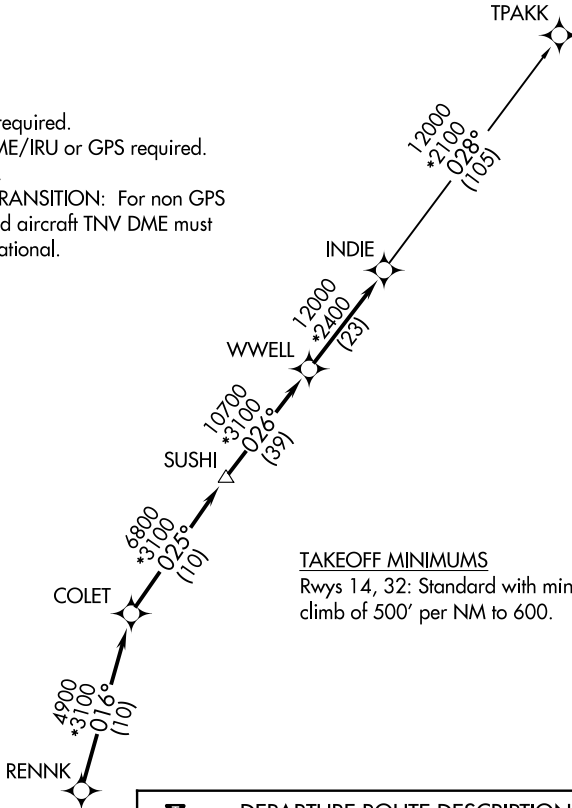
# INDIE EIGHT DEPARTURE (RNAV)

WHARTON, TEXAS

AWOS-3  
118.475  
CTAF  
122.7  
HOUSTON CENTER  
128.6 360.8

**TOP ALTITUDE:  
ASSIGNED BY ATC**

NOTE: RADAR required.  
NOTE: DME/DME/IRU or GPS required.  
NOTE: RNAV 1.  
NOTE: TPAKK TRANSITION: For non GPS  
equipped aircraft TNV DME must  
be operational.



### TAKEOFF MINIMUMS

Rwys 14, 32: Standard with minimum  
climb of 500' per NM to 600.



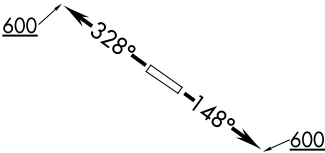
### DEPARTURE ROUTE DESCRIPTION

TAKEOFF RUNWAY 14: Climb on heading 148° to 600  
for RADAR vectors to RENNK, thence . . . .

TAKEOFF RUNWAY 32: Climb on heading 328° to 600  
for RADAR vectors to RENNK, thence . . . .

. . . . on track 016° to COLET, then on track 025° to  
SUSHI, then on track 026° to WWELL, then on track  
026° to INDIE, then on (transition). Maintain ATC  
assigned altitude. Expect filed altitude 10 minutes after  
departure.

TPAKK TRANSITION (INDIE8.TPAKK)



NOTE: Chart not to scale.

SC-5, 22 FEB 2024 to 21 MAR 2024

SC-5, 22 FEB 2024 to 21 MAR 2024

# INDIE EIGHT DEPARTURE (RNAV)

(INDIE8.INDIE) 07OCT21

WHARTON, TEXAS

WHARTON RGNL (A.R.M)