

TAKEOFF MINIMUMS

Rwys 19L/R: Standard.

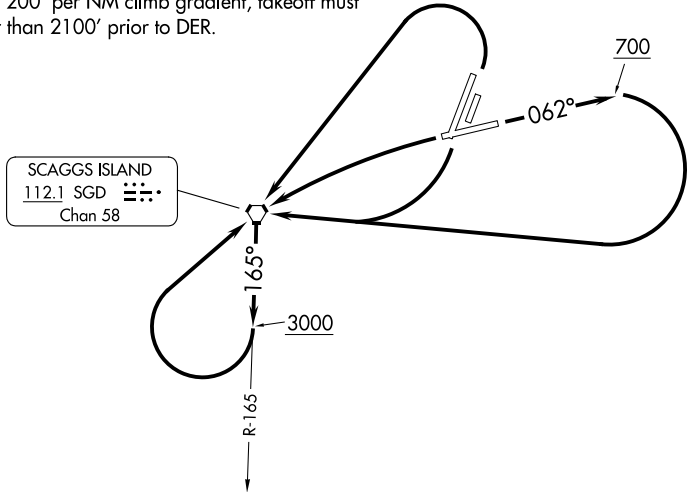
Rwy 1L: Standard with minimum climb of 310' per NM to 900 or 2400-3 for VCOA.

Rwy 1R: Standard with minimum climb of 360' per NM to 700 or 2400-3 for VCOA.

Rwy 6: Standard with minimum climb of 440' per NM to 1700 or 2400-3 for VCOA.

Rwy 24: 300-1½ or standard with minimum climb of 255' per NM to 300, or alternatively, with standard takeoff minimums and a normal 200' per NM climb gradient, takeoff must occur no later than 2100' prior to DER.

OAKLAND CENTER
127.8 353.5
ATIS
124.05
GND CON
121.7
CLNC DEL
127.85
NAPA TOWER*
118.7 (CTAF) 257.8



(CONTINUED ON FOLLOWING PAGE)

NOTE: Chart not to scale.

DEPARTURE ROUTE DESCRIPTION

TAKEOFF RUNWAY 6: Climb on heading 062° to 700, then turn right direct SGD VORTAC, thence. . . .

TAKEOFF RUNWAYS 1L/R, 24: Turn left direct SGD VORTAC, thence. . . .

TAKEOFF RUNWAYS 19L/R: Turn right direct SGD VORTAC, thence. . . .

VCOA RUNWAYS 1L/R, 6: Obtain ATC approval for VCOA when requesting IFR clearance. Climb in visual conditions to cross Napa County Airport at or above 2300, then direct SGD VORTAC, thence. . . .

. . . .aircraft departing SGD VORTAC on R-165 climb on course. All other aircraft continue climb on SGD VORTAC R-165 to 3000, then turn right direct SGD VORTAC before proceeding on course.

TAKEOFF OBSTACLE NOTES

- Rwy 11: Terrain beginning 7' from DER, 340' left of centerline up to 37' MSL.
 - Lighting 10' from DER, 51' right of centerline, 1' AGL/30' MSL.
 - Vehicles on road beginning 105' from DER, 317' right of centerline, up to 41' MSL.
 - Vehicles on road and terrain, beginning 105' from DER, 298' left of centerline, up to 43' MSL.
 - Vehicles on road 203' from DER, 300' left of centerline, 44' MSL.
 - Vehicles on road beginning 363' from DER, 302' left of centerline, up to 45' MSL.
 - Vehicles on road 559' from DER, 544' right of centerline, 44' MSL.
 - Trees beginning 3205' from DER, 790' right of centerline, up to 124' MSL.
 - Trees beginning 4610' from DER, 306' right of centerline, up to 168' MSL.
 - Tree 1.1 NM from DER, 2025' right of centerline, 226' MSL.
 - Trees beginning 1.1 NM from DER, 1674' right of centerline, up to 249' MSL.
 - Tree 1.1 NM from DER, 1839' right of centerline, 253' MSL.
 - Trees and terrain beginning 1.1 NM from DER, 1648' right of centerline, up to 282' MSL.
 - Trees, terrain and fence beginning 1.1 NM from DER, 1634' right of centerline, up to 298' MSL.
 - Tree and fence beginning 1.7 NM from DER, 3269' right of centerline, up to 345' MSL.
 - Electrical system, terrain, fence and tree beginning 1.8 NM from DER, 606' right of centerline, up to 129' AGL/446' MSL.
 - Trees and terrain beginning 2 NM from DER, 542' right of centerline, up to 526' MSL.
 - Terrain, fence and tree beginning 2 NM from DER, 1089' right of centerline, up to 528' MSL.
 - Fence, trees, terrain and building beginning 2.1 NM from DER, 2007' right of centerline, up to 5' AGL/554' MSL.
 - Terrain and trees beginning 2.1 NM from DER, 2139' right of centerline, up to 581' MSL.
 - Tree 2.2 NM from DER, 3913' right of centerline, 585' MSL.
 - Trees, terrain and fence, beginning 2.2 NM from DER, 2013' right of centerline, up to 587' MSL.
 - Trees and terrain beginning 2.3 NM from DER, 2566' right of centerline, up to 599' MSL.
- Rwy 1R: Lighting 43' from DER, 493' right of centerline, 1' AGL/25' MSL.
 - Sign 51' from DER, 420' left of centerline, 2' AGL/23' MSL.
 - Poles and vehicles on road beginning 262' from DER, 63' right of centerline, up to 36' AGL/59' MSL.
 - Vehicles on road 639' from DER, 436' left of centerline, 38' MSL.
 - Vehicles on road beginning 640' from DER, 95' left of centerline, up to 39' MSL.
 - Tree 812' from DER, 673' right of centerline, 70' MSL.
 - Tree 1870' from DER, 470' right of centerline, 71' MSL.
 - Tree 1.2 NM from DER, 2507' right of centerline, 240' MSL.
 - Tree 1.2 NM from DER, 2314' right of centerline, 243' MSL.
 - Trees beginning 1.2 NM from DER, 2143' right of centerline, up to 286' MSL.
 - Trees, fence and terrain beginning 1.3 NM from DER, 2073' right of centerline, up to 309' MSL.
 - Tree 1.3 NM from DER, 2552' right of centerline, 322' MSL.
 - Trees and terrain beginning 1.3 NM from DER, 1204' right of centerline, up to 368' MSL.
 - Trees, terrain and fence beginning 1.4 NM from DER, 1286' right of centerline, up to 391' MSL.
 - Trees beginning 1.4 NM from DER, 1312' right of centerline, up to 400' MSL.
 - Trees, terrain, building and fence beginning 1.4 NM from DER, 2008' right of centerline, up to 417' MSL.
 - Electrical system, fence and terrain beginning 2.1 NM from DER, 2329' right of centerline, up to 129' AGL/446' MSL.
 - Transmission line 2.2 NM from DER, 3214' right of centerline, 123' AGL/542' MSL.
 - Electrical system, fence, pole, terrain and trees beginning 2.2 NM from DER, 1515' right of centerline, up to 116' AGL/544' MSL.
 - Terrain and fence beginning 2.3 NM from DER, 2076' right of centerline, up to 551' MSL.
 - Trees, fence, terrain and building beginning 2.3 NM from DER, 1494' right of centerline, up to 561' MSL.
 - Terrain and tree beginning 2.4 NM from DER, 1626' right of centerline, up to 581' MSL.
 - Terrain and tree beginning 2.4 NM from DER, 2067' right of centerline, up to 612' MSL.
 - Terrain and trees beginning 2.4 NM from DER, 2564' right of centerline, up to 643' MSL.
 - Tree 2.4 NM from DER, 3917' right of centerline, 671' MSL.
 - Trees beginning 2.5 NM from DER, 1954' right of centerline, up to 687' MSL.

(CONTINUED ON FOLLOWING PAGE)

SW-2, 22 FEB 2024 to 21 MAR 2024

SW-2, 22 FEB 2024 to 21 MAR 2024