

RNAV (RNP) Z RWY 7R

TED STEVENS ANCHORAGE INTL (ANC) (PANC)

APP CRS	Rwy Idg	12400
074°	TDZE	132
	Apt Elev	151

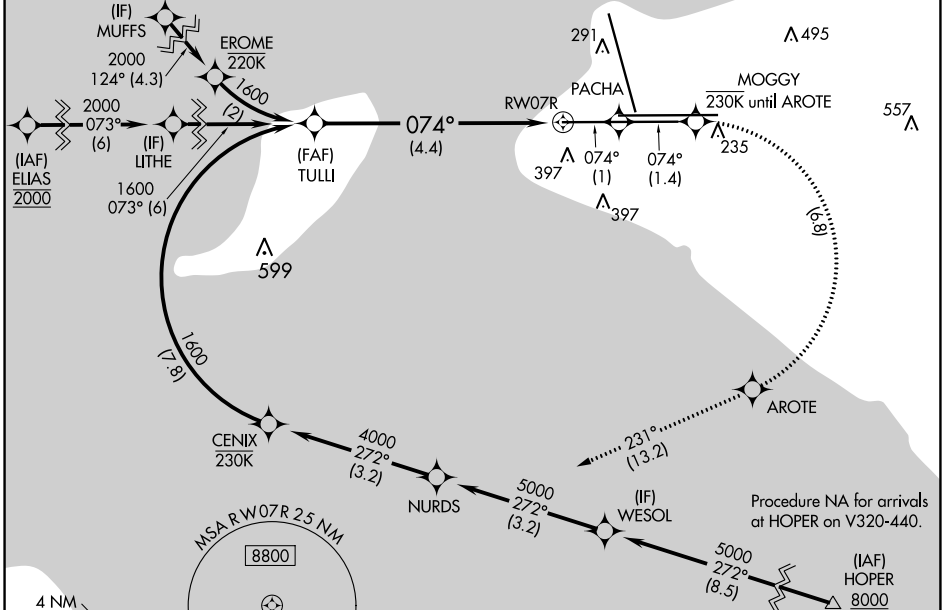
RNP AR APCH, RF required.

⚠ Missed approach requires RNP less than 1.0.
 For uncompensated Baro-VNAV systems, procedure NA below -18°C (0°F) or above 54°C (130°F).
 For inop ALS, increase RNP 0.30 all Cats visibility to 1 3/8 SM.

ALSF-2

MISSED APPROACH: Climb to 3000 on the missed approach route to JUKEP and hold.

D-ATIS	ANCHORAGE APP CON	ANCHORAGE TOWER	GND CON	CLNC DEL
135.5	118.6 290.5	118.3 257.8	121.9 338.25	119.4 323.1



AK, 25 JAN 2024 to 21 MAR 2024

AK, 25 JAN 2024 to 21 MAR 2024

RADAR REQUIRED

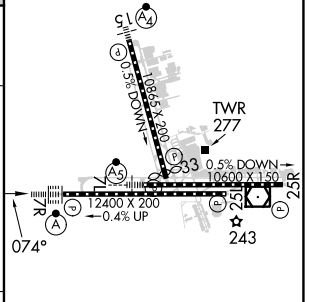
3000 ↑ tr 074°	PACHA	tr 074°	MOGGY	AROTÉ	tr 231°	JUKEP
----------------------	-------	---------	-------	-------	---------	-------

VGSI and RNAV glidepath not coincident (VGSI Angle 3.00/TCH 72).

GP 3.00° TCH 55

See planview for multiple IF locations.

ELEV 151	D	TDZE 132
----------	----------	----------



CATEGORY	A	B	C	D
RNP 0.30 DA	562/50 430 (500-1)			

AUTHORIZATION REQUIRED

REIL Rwy 33
 TDZ/CL Rws 7L and 7R
 HIRL all Rws