

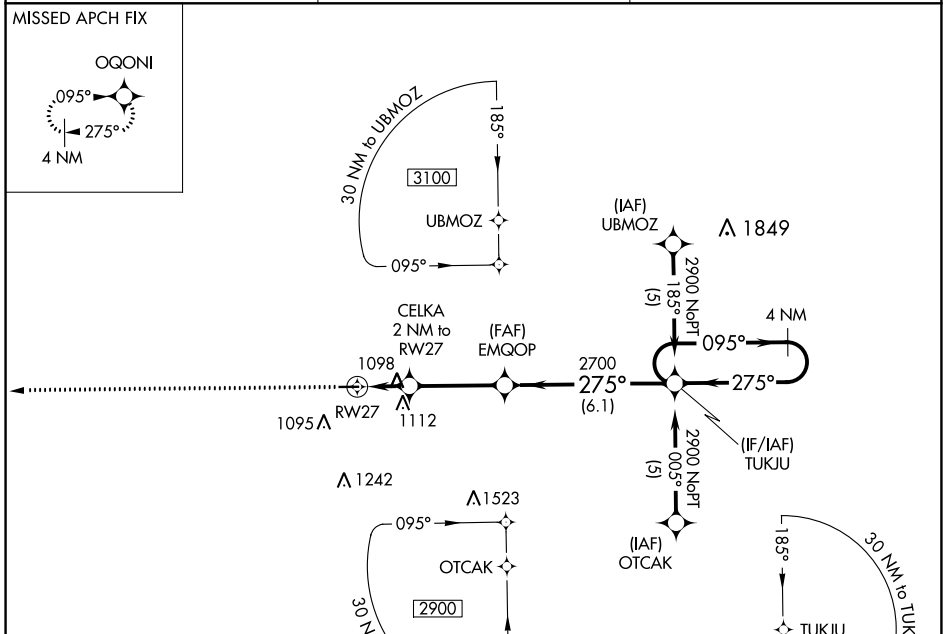
APP CRS	Rwy Idg	<b>3199</b>
<b>275°</b>	TDZE	<b>919</b>
	Apt Elev	<b>920</b>

# RNAV (GPS) RWY 27

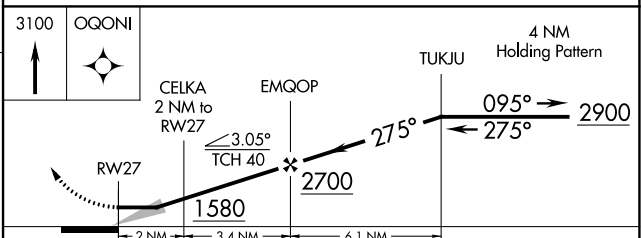
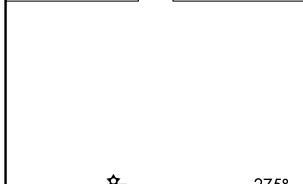
PRICES (9G2)

RNP APCH.	MISSED APPROACH: Climb to 3100 direct OQONI and hold.
<p>▼ Use Flint altimeter setting; when not received, use Howell altimeter setting.</p> <p>▲ NA Procedure NA at night. Rwy 27 helicopter visibility reduction below 1 SM NA.</p>	

FNT ASOS <b>133.15</b>	GREAT LAKES APP CON ★ <b>128.55 257.9</b>	UNICOM <b>123.0 (CTAF) 0</b>
---------------------------	--	---------------------------------



ELEV 920	TDZE 919
----------	----------



CATEGORY	A	B	C	D
LNAV MDA	1400-1 481 (500-1)			NA

EC-1, 22 FEB 2024 to 21 MAR 2024

EC-1, 22 FEB 2024 to 21 MAR 2024

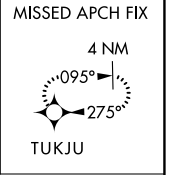
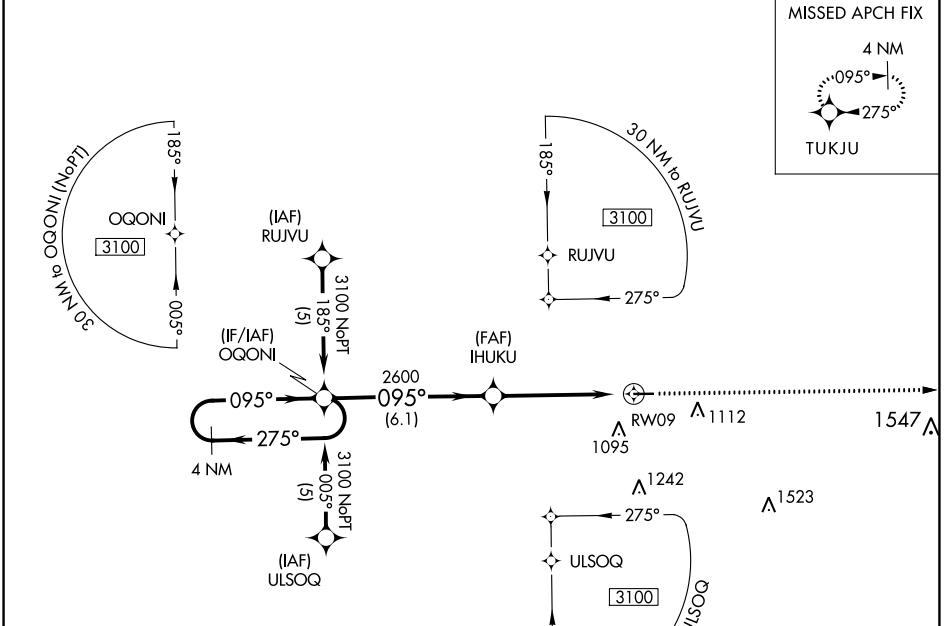
APP CRS	Rwy Idg	<b>3732</b>
<b>095°</b>	TDZE	<b>919</b>
	Apt Elev	<b>920</b>

# RNAV (GPS) RWY 9

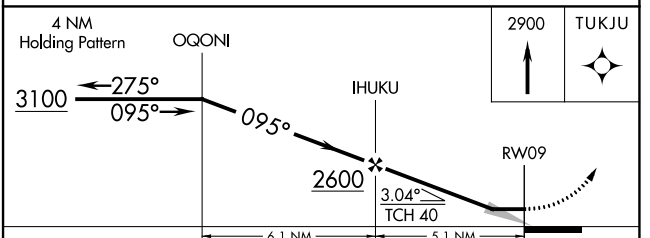
PRICES (9G2)

RNP APCH.	Use Flnt altimeter setting; when not received, use Howell altimeter setting. Procedure NA at night. Rwy 9 helicopter visibility reduction below 1 SM NA.	MISSED APPROACH: Climb to 2900 direct TUKJU and hold.
-----------	---	---

FNT ASOS <b>133.15</b>	GREAT LAKES APP CON ★ <b>128.55 257.9</b>	UNICOM <b>123.0 (CTAF) 0</b>
---------------------------	--	---------------------------------



ELEV 920	TDZE 919
----------	----------



CATEGORY	A	B	C	D
LNAV MDA	1400-1	481 (500-1)		NA

EC-1, 22 FEB 2024 to 21 MAR 2024

EC-1, 22 FEB 2024 to 21 MAR 2024

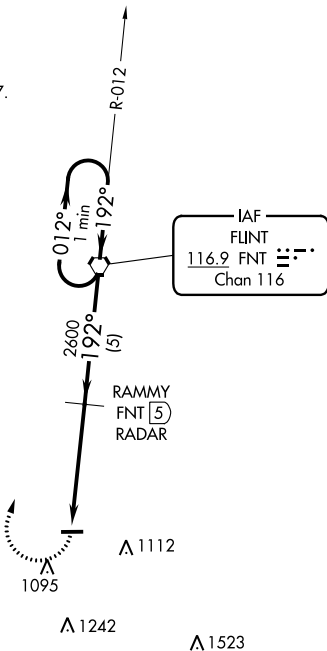
VORTAC FNT <b>116.9</b> Chan <b>116</b>	APP CRS <b>192°</b>	Rwy Idg TDZE Apt Elev	<b>N/A</b> <b>N/A</b> <b>920</b>
---	------------------------	-----------------------------	--

**VOR-A**  
PRICES (9G2)

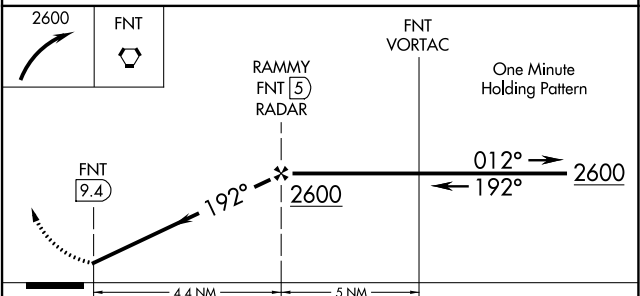
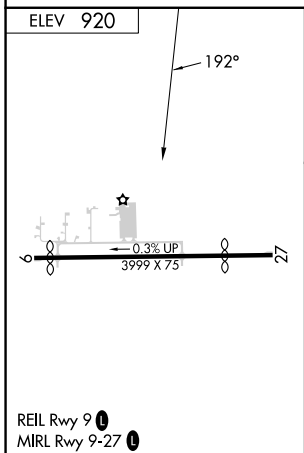
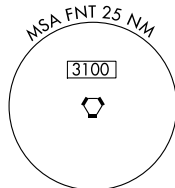
DME or RADAR required.		MISSED APPROACH: Climbing right turn to 2600 direct FNT VORTAC and hold.
▼ Use Flint altimeter setting; when not received, use Howell altimeter setting.	▲ NA Procedure NA at night.	

FNT ASOS <b>133.15</b>	GREAT LAKES APP CON ★ <b>128.55 257.9</b>	UNICOM <b>123.0 (CTAF) 0</b>
---------------------------	--	---------------------------------

NoPT for arrivals on  
FNT VORTAC  
airway radials 286 CW 097.



▲ 1849



FAF to MAP 4.4 NM					CATEGORY	A	B	C	D	
Knots	60	90	120	150	180	CIRCLING			1460-1 540 (600-1)	NA
Min:Sec	4:24	2:56	2:12	1:46	1:28					