

WAAS CH 50538 W16A	APP CRS 164°	Rwy ldg 3400 TDZE 1162 Apt Elev 1162
--	------------------------	---

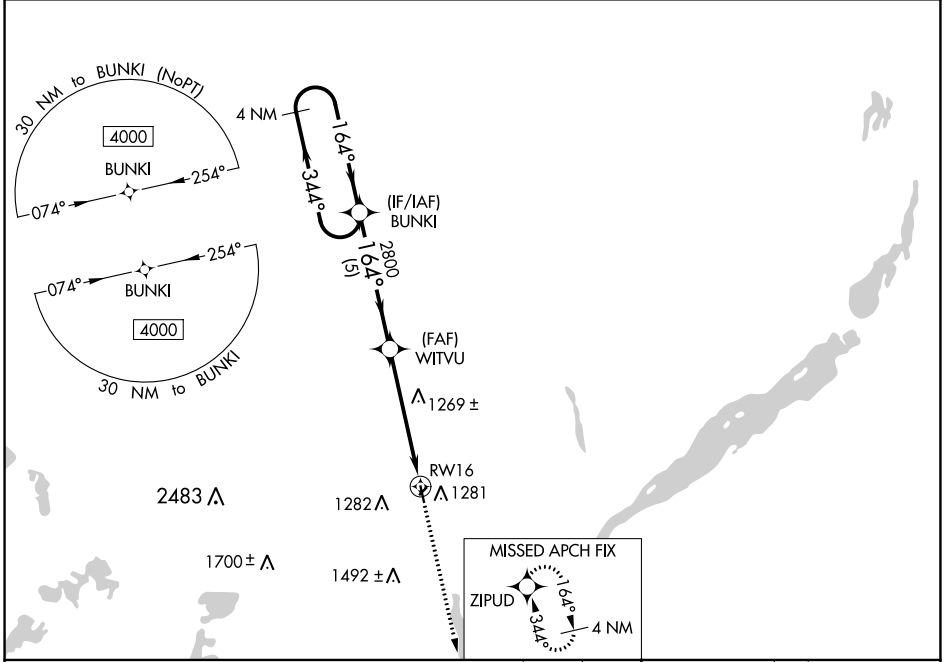
RNAV (GPS) RWY 16

SISSETON MUNI (8D3)

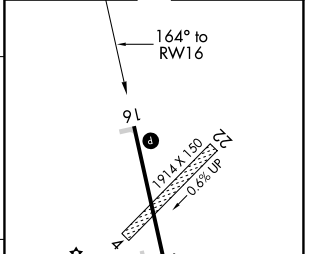
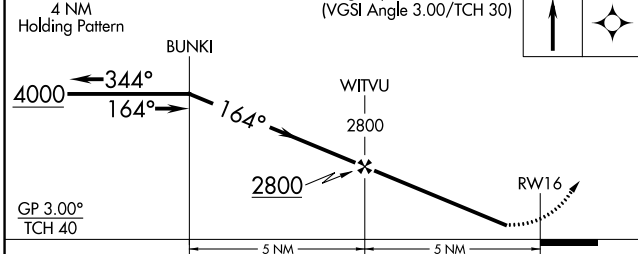
▼ Circling NA to Rwy 4 and 22. Baro-VNAV NA. DME/DME RNP-0.3 NA. Helicopter visibility reduction below 3/4 SM NA. Use Wheaton altimeter setting; when not received, use Ortonville altimeter setting and increase LPV DA to 1496 feet, LNAV/VNAV DA to 1516 feet and all MDA 20 feet. Increase LNAV/VNAV Cats A/B visibility 1/8 mile.

▲ NA MISSED APPROACH: Climb to 4000 direct ZIPUD and hold, continue climb-in-hold to 4000.

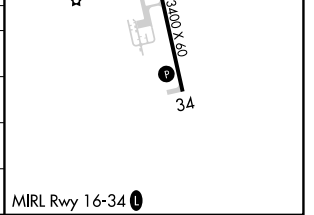
ETH AWOS-3 118.775	MINNEAPOLIS CENTER 128.5 306.2	CTAF 122.90
------------------------------	--	-----------------------



4000 ZIPUD	ELEV 1162	TDZE 1162
------------	-----------	-----------



CATEGORY	A	B	C	D
LPV DA	1478-1 1/8	316 (400-1 1/8)		NA
LNAV/VNAV DA	1498-1 1/8	336 (400-1 1/8)		NA
LNAV MDA	1600-1	438 (500-1)		NA
C CIRCLING	1660-1 498 (500-1)	1700-1 538 (600-1)		NA



NC-1, 22 FEB 2024 to 21 MAR 2024

NC-1, 22 FEB 2024 to 21 MAR 2024

WAAS CH 56638 W34A	APP CRS 344°	Rwy ldg TDZE 1162 Apt Elev 1162	3400
--	------------------------	---	-------------

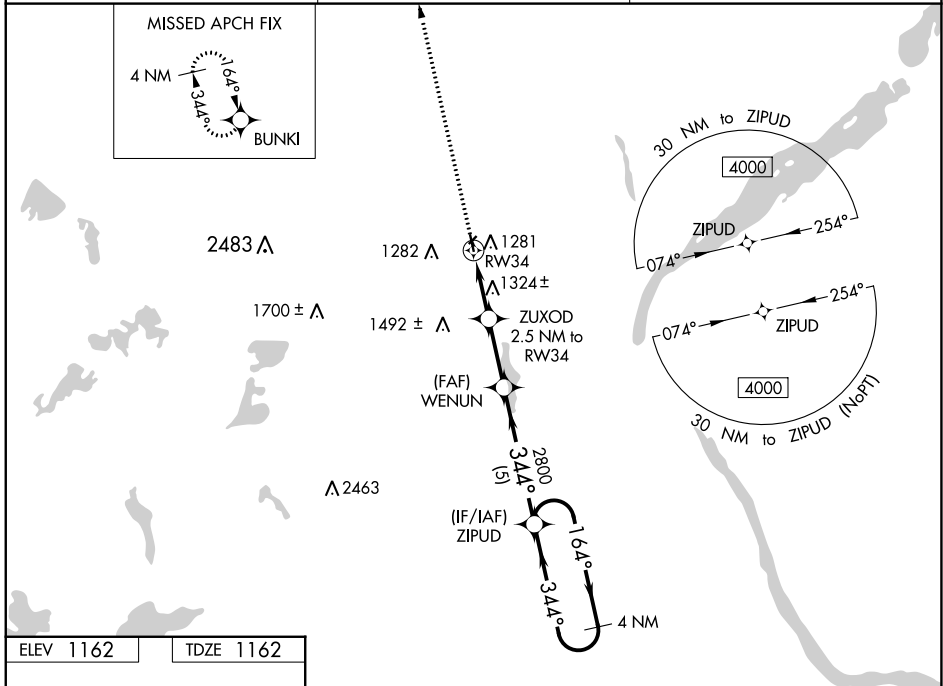
RNAV (GPS) RWY 34

SISSETON MUNI (8D3)

⚠ Circling NA to Rws 4 and 22. Baro-VNAV NA. DME/DME RNP-0.3 NA.
⚠ NA Use Wheaton altimeter setting, when not received, use Ortonville altimeter setting and increase LPV DA to 1496 feet, LNAV/VNAV DA to 1673 feet and all MDA 20 feet.
 Increase LPV Cats A/B visibility 1/8 mile.

MISSED APPROACH: Climb to 4000 direct BUNKI and hold, continue climb in hold to 4000.

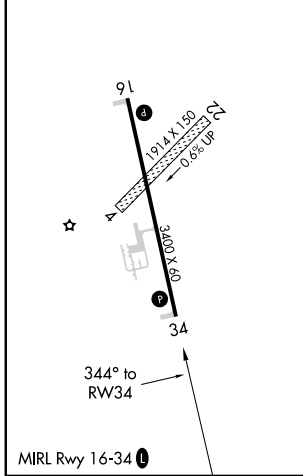
ETH AWOS-3 118.775	MINNEAPOLIS CENTER 128.5 306.2	CTAF 122.9
------------------------------	--	----------------------



NC-1, 22 FEB 2024 to 21 MAR 2024

NC-1, 22 FEB 2024 to 21 MAR 2024

ELEV 1162	TDZE 1162
-----------	-----------



4000 BUNKI VGS1 and RNAV glidepath not coincident (VGS1 Angle 3.00/TCH 28). 4 NM Holding Pattern

*LNAV only

ZUXOD 2.5 NM to RW34 WENUN 2800 ZIPUD 4000

344° heading, 2800 ft MSL at ZIPUD, 164° heading to 4000 ft holding.

GP 3.00° TCH 40

CATEGORY	A	B	C	D
LPV DA	1478-1	316 (400-1)		NA
LNAV/VNAV DA	1655-1¾	493 (500-1¾)		NA
LNAV MDA	1640-1	478 (500-1)		NA
C CIRCLING	1660-1 498 (500-1)	1700-1 538 (600-1)		NA