

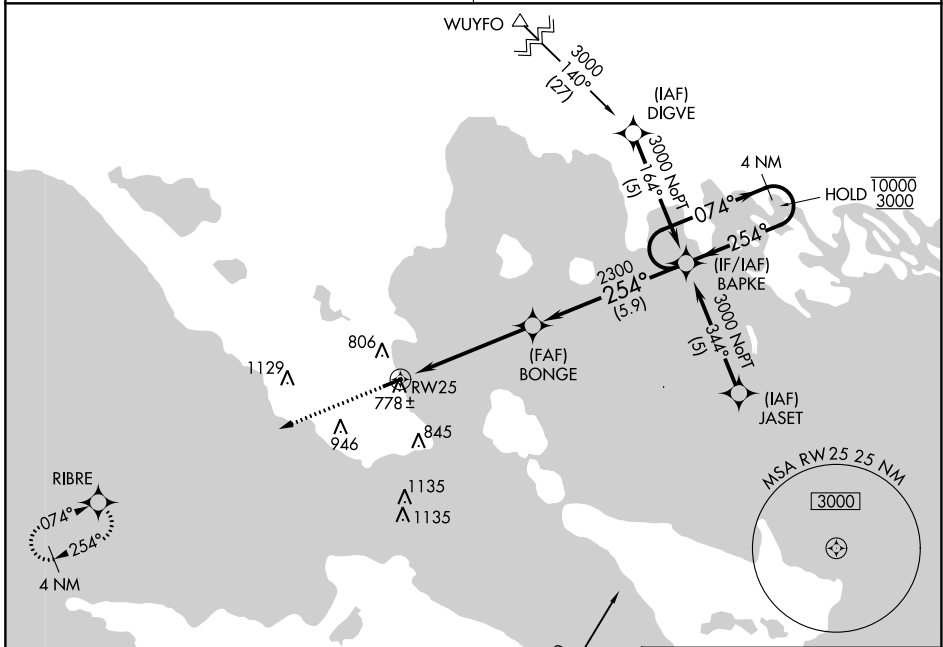
APP CRS	Rwy Idg	3800
254°	TDZE	623
	Apt Elev	624

RNAV (GPS) RWY 25

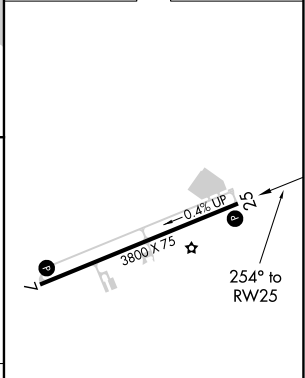
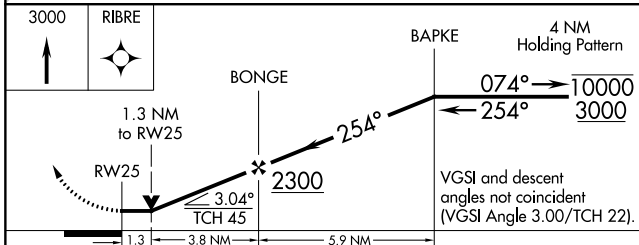
MACKINAC COUNTY (83D)

RNP APCH.	<p>⚠ Circling Rwy 7 NA at night.</p> <p>⚠ NA Circling NA at night south of Rwy 7-25.</p> <p>Rwy 25 helicopter visibility reduction below ¾ SM NA.</p>	MISSED APPROACH: Climb to 3000 direct RIBRE and hold.
-----------	---	---

MINNEAPOLIS CENTER	UNICOM
134.6 354.05	122.7 (CTAF) 0



ELEV	624	TDZE	623
------	-----	------	-----



CATEGORY	A	B	C	D
RNAV MDA	1040-1	417 (500-1)	1040-1½ 417 (500-1½)	NA
CIRCLING	1260-1	636 (700-1)	1300-2 676 (700-2)	NA

MIRL Rwy 7-25 0
REIL Rwy 7 and 25 0

EC-1, 22 FEB 2024 to 21 MAR 2024

EC-1, 22 FEB 2024 to 21 MAR 2024

APP CRS Rwy Idg **3800**
 074° TDZE **624**
 Apt Elev **624**

RNAV (GPS) RWY 7

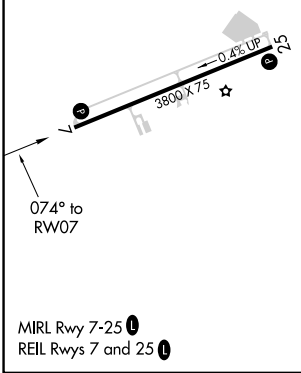
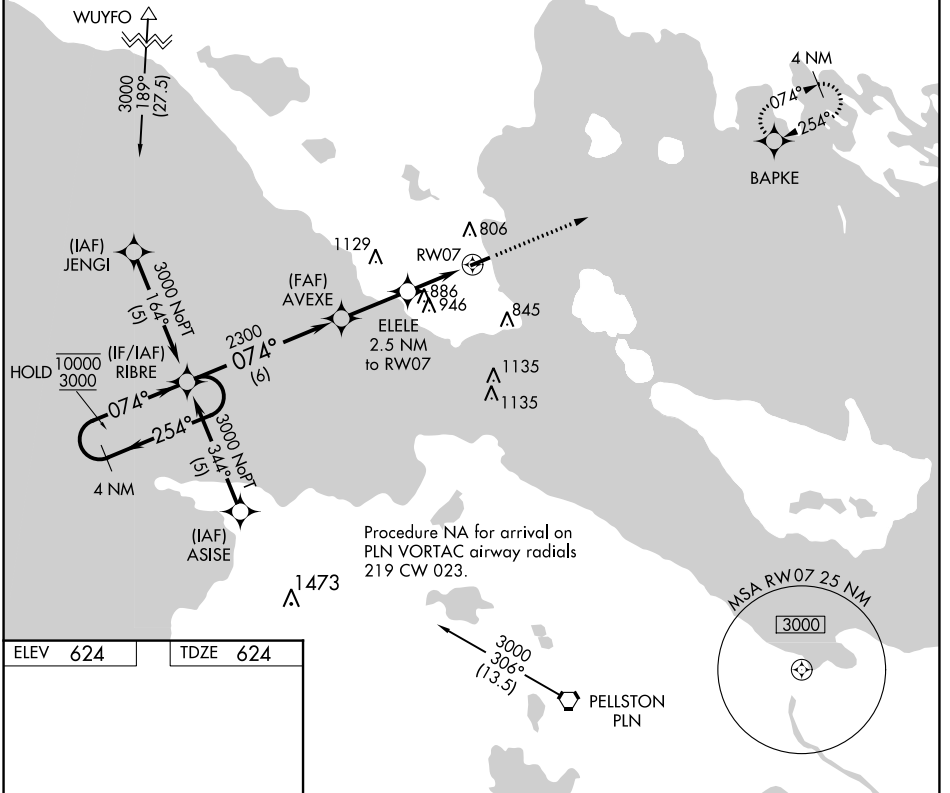
MACKINAC COUNTY (83D)

RNP APCH.
 ⚠ Straight-in Rwy 07 NA at night, Circling Rwy 07 NA at night.
 ⚠ NA Rwy 07 helicopter visibility reduction below 1 SM NA.
 Circling NA at night south of Rwy 07-25.

MISSED APPROACH: Climb to 3000 direct BAPKE and hold.

MINNEAPOLIS CENTER
134.6 354.05

UNICOM
122.7 (CTAF) 0



4 NM Holding Pattern RIBRE		Visual Segment - Obstacles.		3000	BAPKE
10000 ← 254°		AVEXE		↑	⬠
3000 → 074°		ELELE 2.5 NM to RWY 07			
		2300			
		1460			
		RWY 07			
		6 NM		2.6 NM → 2.5 NM	
CATEGORY	A	B	C	D	
LNAV MDA	1200-1	576 (600-1)	1200-1½ 576 (600-1½)	NA	
CIRCLING	1260-1	636 (700-1)	1300-2 676 (700-2)	NA	

EC-1, 22 FEB 2024 to 21 MAR 2024

EC-1, 22 FEB 2024 to 21 MAR 2024