

APP CRS	Rwy Idg	<b>4002</b>
<b>008°</b>	TDZE	<b>2316</b>
	Apt Elev	<b>2337</b>

# RNAV (GPS) RWY 2

BOUNDARY COUNTY (65S)

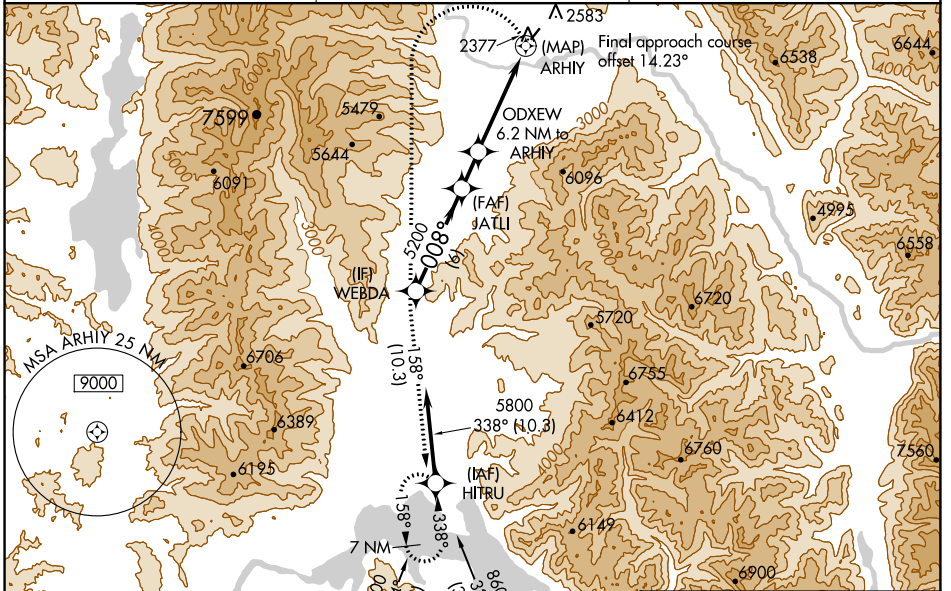
When local altimeter setting not received, procedure NA.  
 NA  
 -7°C Helicopter visibility reduction below 3/4 SM NA.  
 \* Missed approach requires minimum climb of 400 feet per NM to 6600.  
 # Missed approach requires minimum climb of 300 feet per NM to 6400.

MISSED APPROACH: Climbing left turn to 8600 direct WEBDA and on track 158° to HITRU, continue climb-in-hold to 8600.

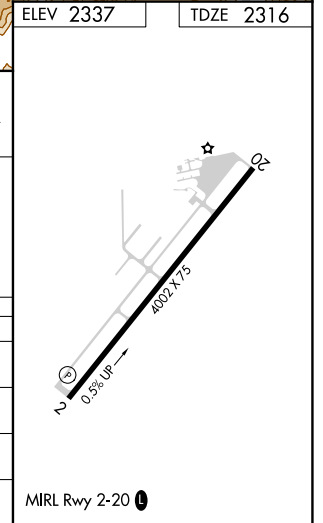
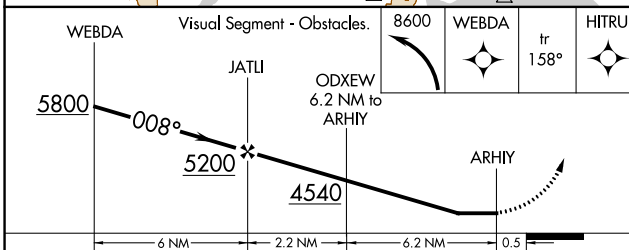
AWOS-3PT  
**132.575**

SEATTLE CENTER  
**123.95 290.55**

UNICOM  
**123.0 (CTAF)**



ELEV 2337	TDZE 2316
-----------	-----------



CATEGORY	A	B	C	D
LNAV MDA*	3260-1 1/4	944 (1000-1 1/4)	3260-2 3/4 944 (1000-2 3/4)	NA
LNAV MDA#	3880-1 1/4 1564 (1600-1 1/4)	3880-1 1/2 1564 (1600-1 1/2)	3880-3 1564 (1600-3)	NA
LNAV MDA	4480-1 1/4 2164 (2200-1 1/4)	4480-1 1/2 2164 (2200-1 1/2)	4480-3 2164 (2200-3)	NA
CIRCLING	4480-1 1/4 2143 (2200-1 1/4)	4480-1 1/2 2143 (2200-1 1/2)	4480-3 2143 (2200-3)	NA

NW-1, 22 FEB 2024 to 21 MAR 2024

NW-1, 22 FEB 2024 to 21 MAR 2024