

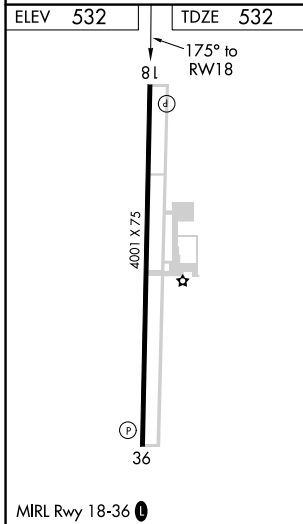
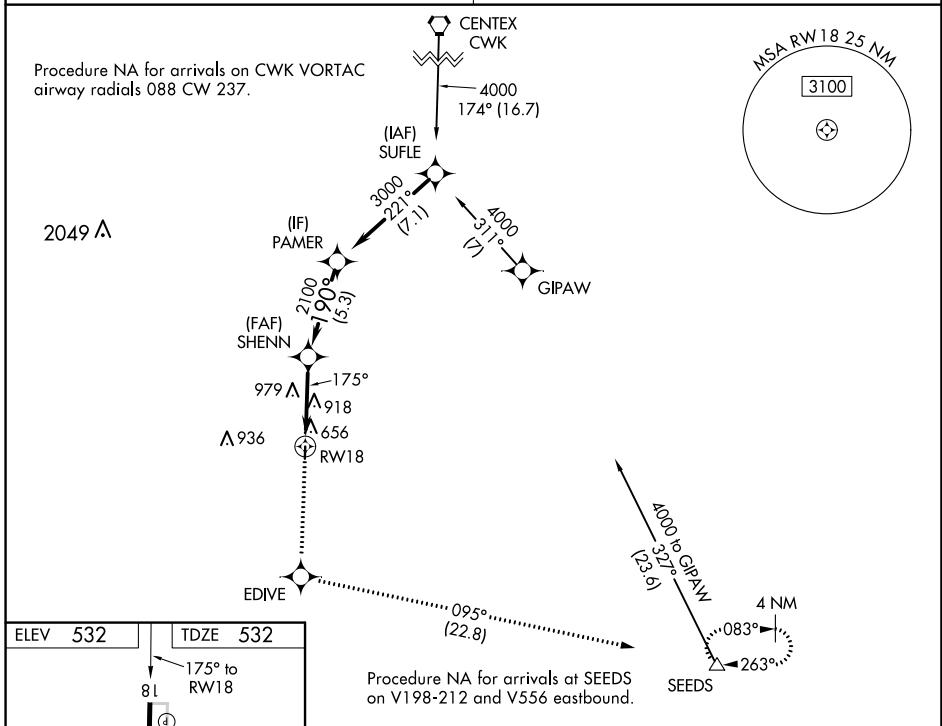
WAAS CH 45922	APP CRS 175°	Rwy Idg TDZE Apt Elev	4001 532 532
-------------------------	------------------------	-----------------------------	---

RNAV (GPS) RWY 18

LOCKHART MUNI (50R)

RNP APCH.	<p>Baro-VNAV NA. Use San Marcos altimeter setting, when not received, use Austin-Bergstrom Intl altimeter setting and increase all DA 16 feet, all MDA 20 feet; increase LNAV Cat B visibility ¼ SM.</p>	<p>MISSED APPROACH: Climb to 4000 direct EDIVE and on track 095° to SEEDS and hold.</p>
-----------	--	---

AUSTIN APP CON 120.875 270.25	UNICOM 122.8 (CTAF) 0
---	---------------------------------



4000	EDIVE	SEEDS	VGSI and RNAV glidepath not coincident (VGSI Angle 3.50/TCH 24).	
↑	✧	△	tr 095°	
			SHENN 2100	PAMER 3000
			GP 3.00°	TCH 40
CATEGORY	A	B	C	D
LPV DA	815-1 283 (300-1)			NA
LNAV/VNAV DA	883-1¼ 351 (400-1¼)			NA
LNAV MDA	1260-1 728 (800-1)		1260-2 728 (800-2)	NA

SC-3, 27 JAN 2022 to 24 FEB 2022

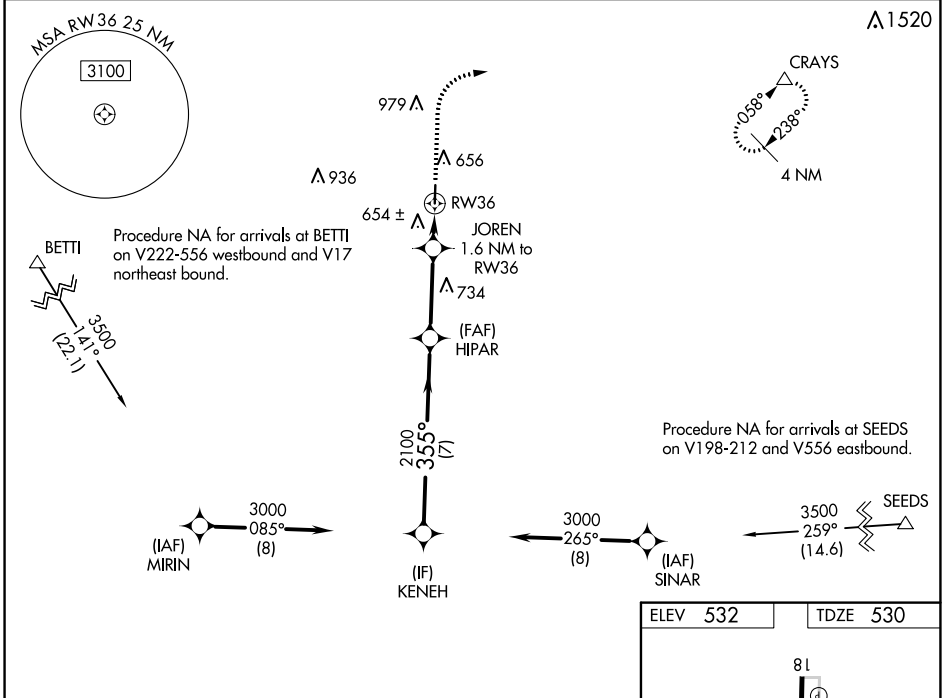
SC-3, 27 JAN 2022 to 24 FEB 2022

WAAS CH 53323 W36A	APP CRS 355°	Rwy Idg TDZE Apt Elev	4001 530 532
--	------------------------	-----------------------------	---

RNAV (GPS) RWY 36

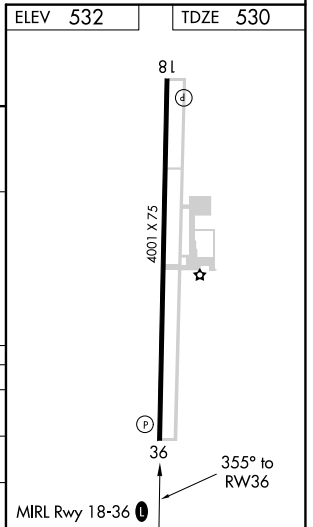
LOCKHART MUNI (50R)

RNP APCH.		MISSED APPROACH: Climb to 1000, then climbing right turn to 3000 direct CRAYS and hold.
<p>Baro-VNAV NA. Rwy 36 helicopter visibility reduction below 3/4 SM NA. NA Use San Marcos altimeter setting, when not received, use Austin Bergstrom Intl altimeter setting and increase all DA 16 feet, all MDA 20 feet and increase LNAV Cat C visibility 1/8 mile.</p>		
AUSTIN APP CON 120.875 270.25		UNICOM 122.8 (CTAF) 0



SC-3, 27 JAN 2022 to 24 FEB 2022

SC-3, 27 JAN 2022 to 24 FEB 2022



VGSI and RNAV glidepath not coincident (VGSI Angle 3.00/TCH 25).

3000	2100	1000	3000	CRAYS
KENEH		HIPAR		
GP 3.00° TCH 40		*LNAV only.		
355°		2100		
7 NM		3.2 NM		
A		B		
LPV DA		813-1 283 (300-1)		NA
LNAV/VNAV DA		863-1 333 (400-1 1/8)		NA
LNAV MDA		940-1 410 (500-1)		NA
		940-1 410 (500-1 1/8)		