

WAAS CH 69438 W10A	APP CRS 096°	Rwy Idg 5002 TDZE 240 Apt Elev 240
--	------------------------	---

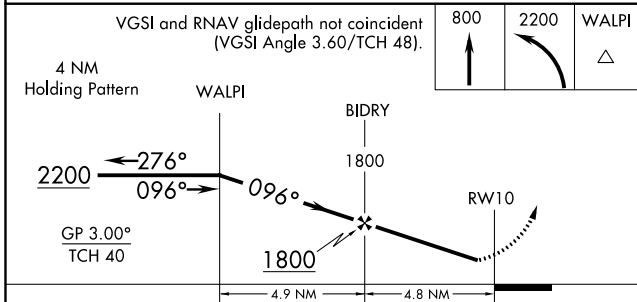
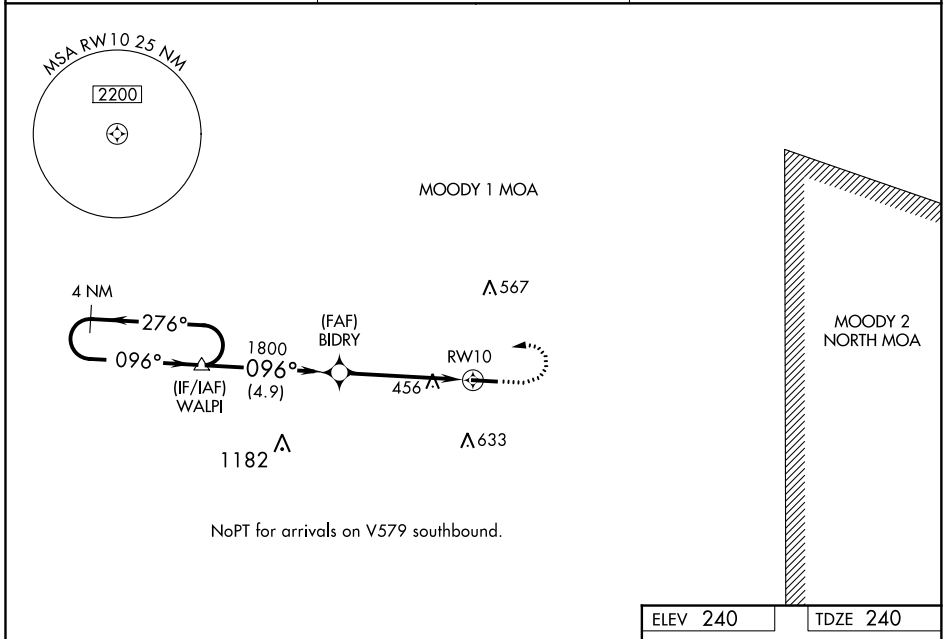
RNAV (GPS) RWY 10

BERRIEN COUNTY (4J2)

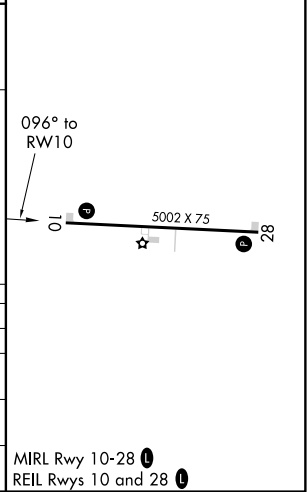
⚠ Baro-VNAV NA. DME/DME RNP-0.3 NA. Helicopter visibility reduction below 3/4 SM NA. Use Moody AFB altimeter setting. When not received, use Douglas altimeter setting and increase all DA 24 feet and MDA 40 feet; increase LNAV/VNAV all Cats visibility 1/8 mile and increase LNAV Cat C and Circling Cat C visibility 1/4 mile. Night landing: Rwy 28 NA.

⚠ NA MISSED APPROACH: Climb to 800 then climbing left turn to 2200 direct WALPI and hold.

KVAD ATIS 273.5	VALDOSTA APP CON★ 126.6 285.6	UNICOM 122.7 (CTAF) 0
---------------------------	---	---------------------------------



ELEV 240	TDZE 240
----------	----------



CATEGORY	A	B	C	D
LPV DA	560-1 1/8	320 (400-1 1/8)		NA
LNAV/VNAV DA	793-1 7/8	553 (600-1 7/8)		NA
LNAV MDA	760-1	520 (600-1)	760-1 3/8 520 (600-1 3/8)	NA
C CIRCLING	820-1	580 (600-1)	980-2 740 (800-2)	NA

SE-4, 11 AUG 2022 to 08 SEP 2022

SE-4, 11 AUG 2022 to 08 SEP 2022

WAAS CH 72838 W28A	APP CRS 276°	Rwy Idg TDZE Apt Elev	5002 236 240
--	------------------------	-----------------------------	---

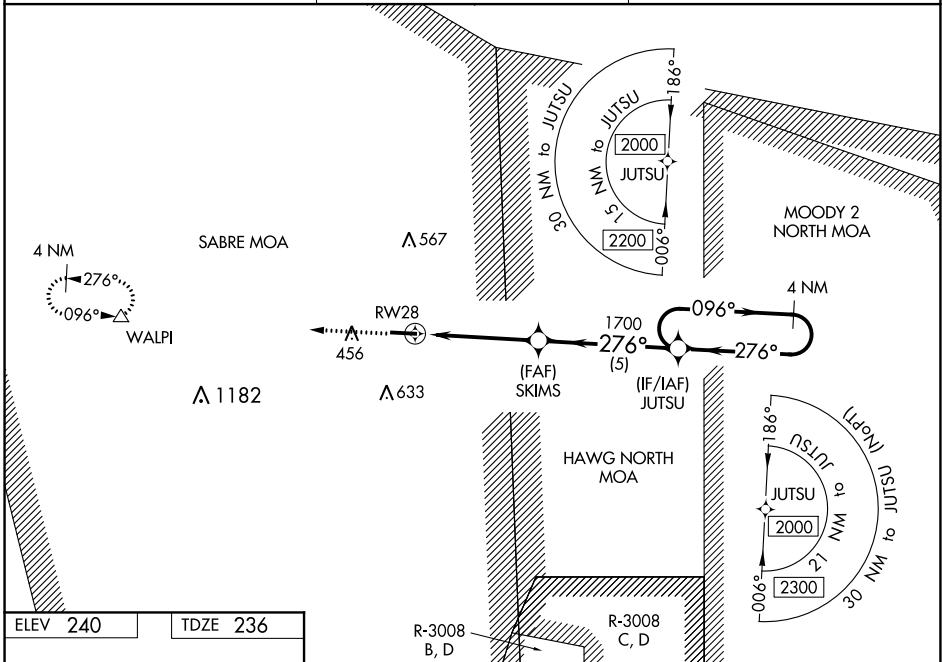
RNAV (GPS) RWY 28

BERRIEN COUNTY (4J2)

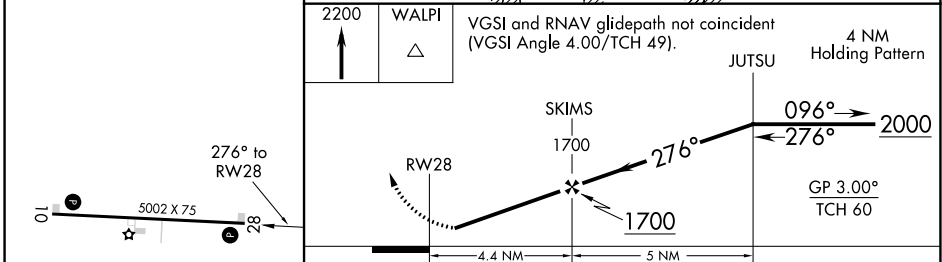
Baro-VNAV NA. Rwy 28 helicopter visibility reduction below 1 SM NA. DME/DME RNP-0.3 NA. Straight-in Rwy 28 NA at night, Circling Rwy 28 NA at night. Use Moody AFB altimeter setting. When not received, use Douglas altimeter setting and increase all LPV DA to 602 feet, LNAV/VNAV DA to 561 feet, and all MDA 40 feet. Increase LNAV and Circling Cat C visibility 1/4 SM.

MISSED APPROACH: Climb to 2200 direct WALPI and hold.

KVAD ATIS 273.5	VALDOSTA APP CON★ 126.6 285.6	UNICOM 122.7 (CTAF) 0
---------------------------	---	---------------------------------



ELEV 240	TDZE 236
-----------------	-----------------



CATEGORY	A	B	C	D
LPV DA	578-1	342 (400-1)		NA
LNAV/VNAV DA	537-1	301 (300-1)		NA
LNAV MDA	740-1	504 (500-1)	740-1 3/8 504 (500-1 3/8)	NA
C CIRCLING	740-1 500 (600-1)	800-1 560 (600-1)	980-2 740 (800-2)	NA

MIRL Rwy 10-28 0
REIL Rws 10 and 28 0

SE-4, 11 AUG 2022 to 08 SEP 2022

SE-4, 11 AUG 2022 to 08 SEP 2022