

APP CRS	Rwy Idg	4000
174°	TDZE	247
	Apt Elev	248

RNAV (GPS) RWY 17

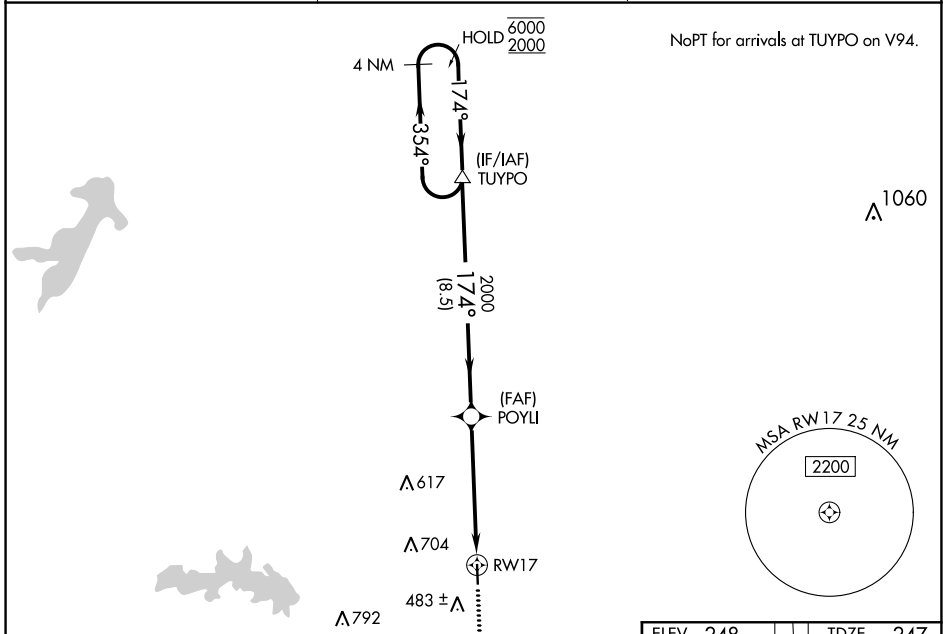
PANOLA COUNTY-SHARPE FLD (4F2)

RNP APCH-GPS.

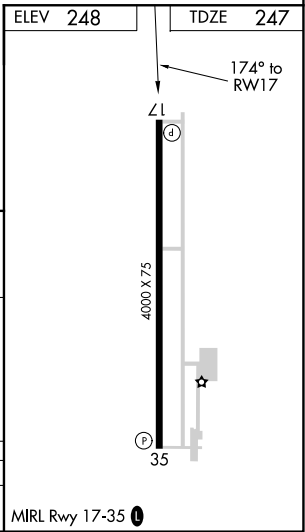
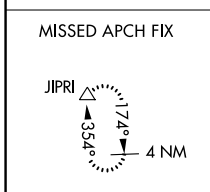
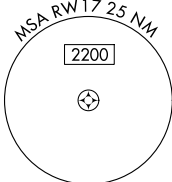
▲ Procedure NA at night. Rwy 17 helicopter visibility reduction below 1 SM NA. When local altimeter setting not received, use Longview altimeter setting.

MISSED APPROACH: Climb to 3800 direct JIPRI and hold, continue climb-in-hold to 3800.

AWOS-3PT 121.125	SHREVEPORT APP CON ★ 119.9 335.55	UNICOM 122.8 (CTAF) 0
----------------------------	---	---------------------------------



NoPT for arrivals at TUYPO on V94.



VGSJ and descent angles not coincident.			
4 NM Holding Pattern	TUYPO	POYLI	RWY 17
6000	2000	2000	3800
354°	174°	174°	3.04°
8.5 NM		5.3 NM	
CATEGORY	A	B	C
LNAV MDA	760-1	513 (600-1)	760-1 3/8 513 (600-1 3/8)
			NA

SC-2, 22 FEB 2024 to 21 MAR 2024

SC-2, 22 FEB 2024 to 21 MAR 2024