

WAAS CH 58203 W18A	APP CRS 179°	Rwy Idg TDZE 686 Apt Elev 691	4002
--	------------------------	---	-------------

RNAV (GPS) RWY 18

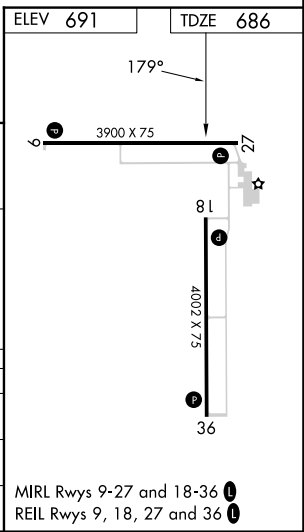
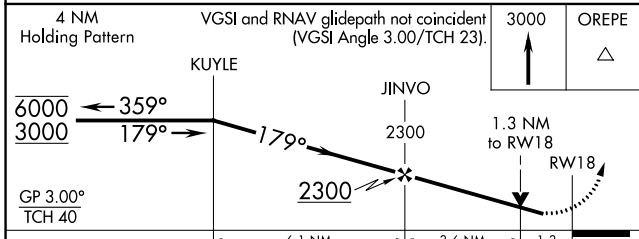
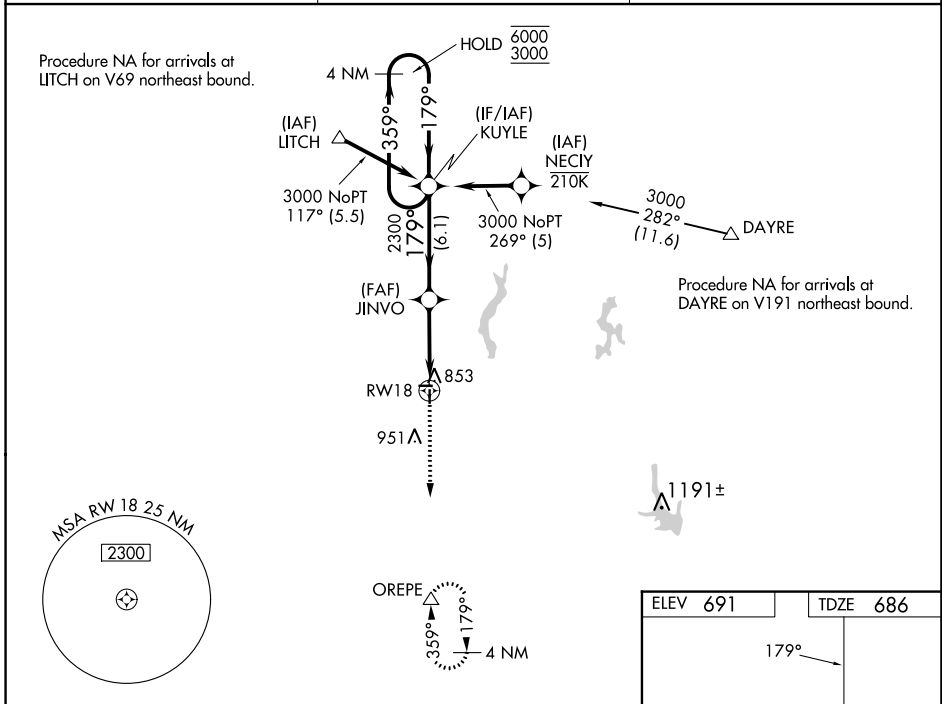
LITCHFIELD MUNI (3LF)

RNP APCH - GPS.

⚠ Baro-VNAV and VDP NA when using Taylorville altimeter setting. Rwy 18 helicopter visibility reduction below $\frac{3}{4}$ SM NA. For uncompensated Baro-VNAV systems, LNAV/VNAV NA below -1.6°C or above 54°C . When local altimeter setting not received, use Taylorville altimeter setting and increase LPV DA to 1025 feet and all visibilities $\frac{1}{8}$ SM, increase LNAV/VNAV DA to 1146 feet and all visibilities $\frac{1}{4}$ SM, increase all MDAs 80 feet and LNAV visibility Cat C $\frac{1}{8}$ SM.

MISSED APPROACH: Climb to 3000 direct OREPE and hold.

AWOS-3PT 118.175	ST. LOUIS APP CON 124.2 353.9	UNICOM 122.8 (CTAF) 0
----------------------------	---	---------------------------------



CATEGORY	A	B	C	D
LPV DA	952- $\frac{7}{8}$ 266 (300- $\frac{7}{8}$)			NA
LNAV/VNAV DA	1073-1 $\frac{1}{8}$ 387 (400-1 $\frac{1}{8}$)			NA
LNAV MDA	1120-1 434 (500-1)		1120-1 $\frac{1}{4}$ 434 (500-1 $\frac{1}{4}$)	NA

EC-3, 22 FEB 2024 to 21 MAR 2024

EC-3, 22 FEB 2024 to 21 MAR 2024

APP CRS	Rwy Idg	3900
269°	TDZE	691
	Apt Elev	691

RNAV (GPS) RWY 27

LITCHFIELD MUNI (3L.F)

RNP APCH - GPS.

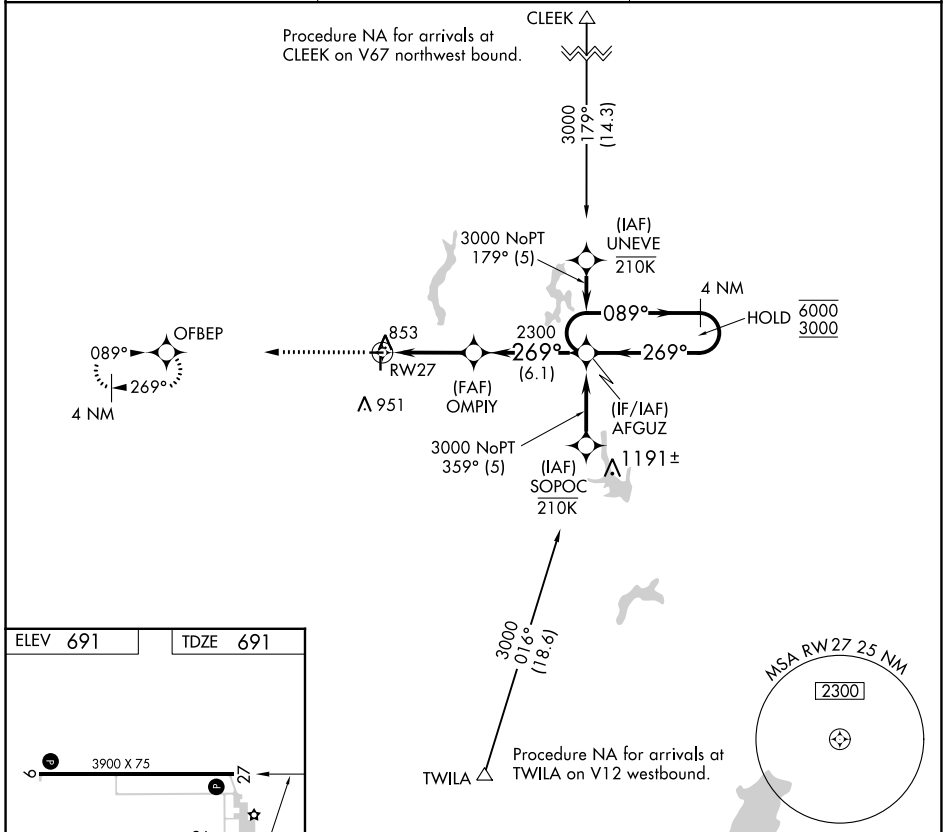
⚠ Rwy 27 helicopter visibility reduction below 3/4 SM NA. When local altimeter setting not received, use Taylorville altimeter setting and increase all MDA 80 feet and LNAV Cat C visibility 1/8 SM. VDP NA when using Taylorville altimeter setting.

MISSED APPROACH: Climb to 3000 direct OFBEP and hold.

AWOS-3PT
118.175

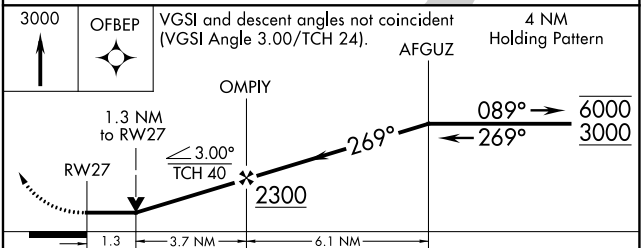
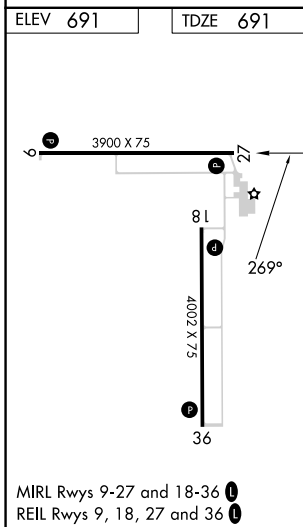
ST. LOUIS APP CON
124.2 353.9

UNICOM
122.8 (CTAF) 0



EC-3, 22 FEB 2024 to 21 MAR 2024

EC-3, 22 FEB 2024 to 21 MAR 2024



CATEGORY	A	B	C	D
LNAV MDA	1120-1	429 (500-1)	1120-1 1/4 429 (500-1 1/4)	NA

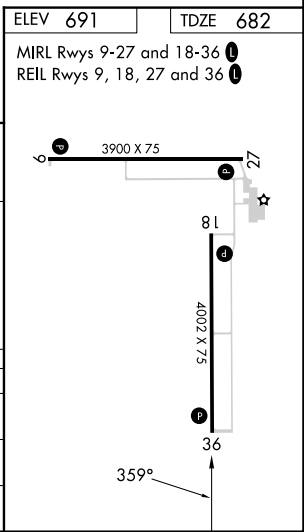
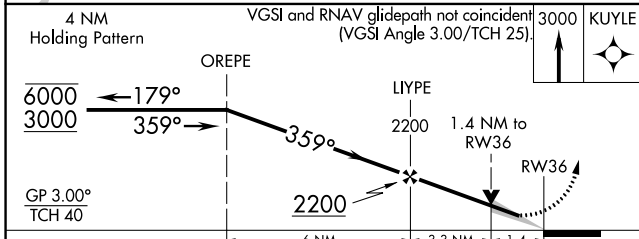
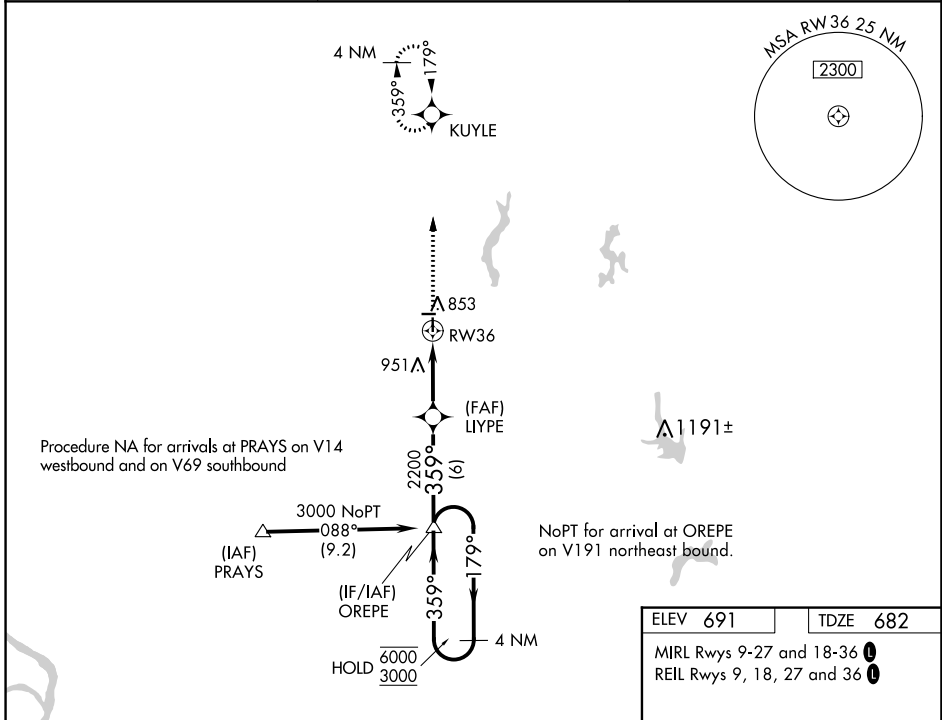
WAAS CH 40403 W36A	APP CRS 359°	Rwy Idg 4002 TDZE 682 Apt Elev 691
--	------------------------	---

RNAV (GPS) RWY 36

LITCHFIELD MUNI (3LF)

RNP APCH - GPS.	<p>MISSED APPROACH: Climb to 3000 direct KUYLE and hold.</p>
<p>Baro-VNAV and VDP NA when using Taylorville altimeter setting. For uncompensated Baro-VNAV systems, LNAV/VNAV NA below -16°C or above 54°C. When local altimeter setting not received, use Taylorville altimeter setting and increase LPV DA to 1005 feet and all visibilities ¼ SM, increase LNAV/VNAV DA to 1145 and all visibilities ¼ SM; increase all MDAs 80 feet and increase LNAV Cat C visibility ½ SM.</p>	

AWOS-3PT 118.175	ST. LOUIS APP CON 124.2 353.9	UNICOM 122.8 (CTAF) 0
----------------------------	---	---------------------------------



CATEGORY	A	B	C	D
LPV DA	932-¾ 250 (300-¾)			NA
LNAV/VNAV DA	1072-1½ 390 (400-1½)			NA
LNAV MDA	1140-1 458 (500-1)		1140-1¾ 458 (500-1¾)	

EC-3, 22 FEB 2024 to 21 MAR 2024

EC-3, 22 FEB 2024 to 21 MAR 2024

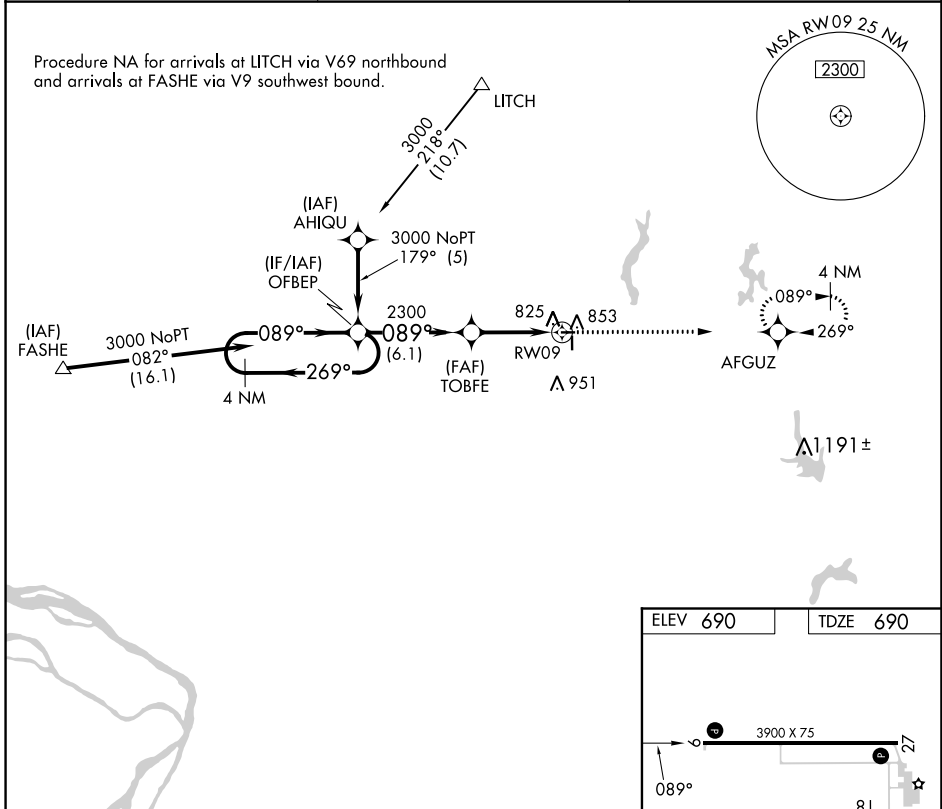
APP CRS	Rwy Idg	3900
089°	TDZE	690
	Apt Elev	690

RNAV (GPS) RWY 9

LITCHFIELD MUNI (3LF)

RNP APCH.	<p>When local altimeter setting not received, use Taylorville altimeter setting and increase all MDA 80 feet and LNAV Cat C visibility to 1½ SM. VDP NA with Taylorville altimeter setting. Rwy 9 helicopter visibility reduction below ¾ SM NA.</p>	MISSED APPROACH: Climb to 3000 direct AFGUZ and hold.
-----------	--	---

AWOS-3PT 118.175	ST. LOUIS APP CON 124.2 353.9	UNICOM 122.8 (CTAF) 0
----------------------------	---	---------------------------------



EC-3, 22 FEB 2024 to 21 MAR 2024

EC-3, 22 FEB 2024 to 21 MAR 2024

