

LOUISVILLE, GEORGIA

AL-9837 (FAA)

23222

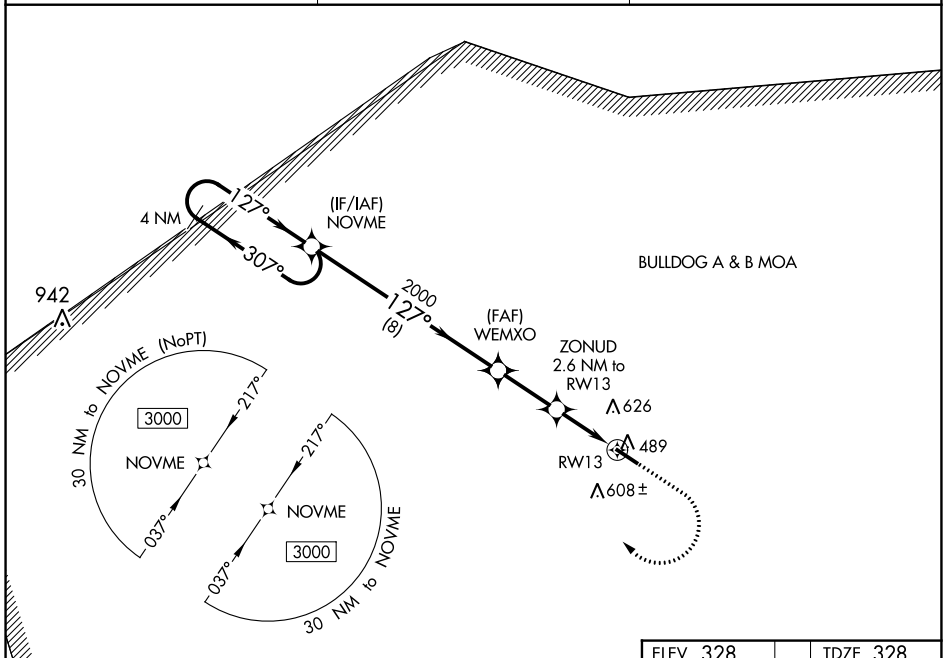
WAAS CH 56539 W13A	APP CRS 127°	Rwy Idg TDZE Apt Elev	5002 328 328
--	------------------------	-----------------------------	---

RNAV (GPS) RWY 13

LOUISVILLE MUNI (2J3)

RNP APCH GPS.	MISSED APPROACH: Climb to 1000 then climbing right turn to 3000 direct NOVME and hold.
For uncompensated Baro-VNAV systems, LNAV/VNAV NA below -15°C or above 54°C. Rwy 13 helicopter visibility reduction below 3/4 SM NA.	

AWOS-3PT 119.35	AUGUSTA APP CON 126.8 270.3	CTAF 122.9
---------------------------	---------------------------------------	----------------------



SE-4, 22 FEB 2024 to 21 MAR 2024

SE-4, 22 FEB 2024 to 21 MAR 2024

VGSi and RNAV glidepath not coincident (VGSi Angle 3.83/TCH 23).		ELEV 328	TDZE 328
4 NM Holding Pattern		1000	3000
NOVME			
NOVME			
GP 3.00° TCH 45			
8 NM		2.5 NM	1.5 NM
		1.1 NM	1.1 NM
CATEGORY	A	B	C
LPV DA	578-1	250 (300-1)	
LNAV/ VNAV DA	768-1½	440 (500-1½)	
LNAV MDA	800-1	472 (500-1)	800-1½ 472 (500-1½)
CIRCLING	840-1 512 (600-1)	980-1 652 (700-1)	980-1¾ 652 (700-1¾)
			980-2 652 (700-2)
MIRL Rwy 13-31			

LOUISVILLE, GEORGIA
Orig-B 10AUG23

32°59'N-82°23'W

RNAV (GPS) RWY 13

LOUISVILLE MUNI (2J3)

LOUISVILLE, GEORGIA

AL-9837 (FAA)

22223

WAAS CH 90439 W31A	APP CRS 307°	Rwy Idg TDZE Apt Elev	5002 319 328
--	------------------------	-----------------------------	---

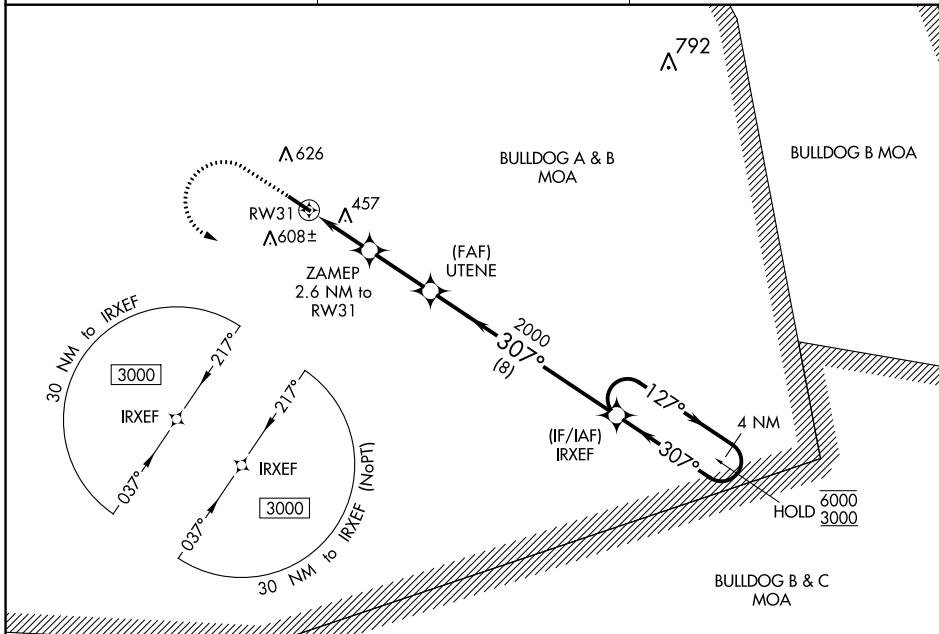
RNAV (GPS) RWY 31

LOUISVILLE MUNI (2J3)

RNP APCH - GPS.
 For uncompensated Baro-VNAV systems, LNAV/VNAV NA below -15°C or above 54°C.

MISSED APPROACH: Climb to 1000 then climbing left turn to 3000 direct IRXEF and hold.

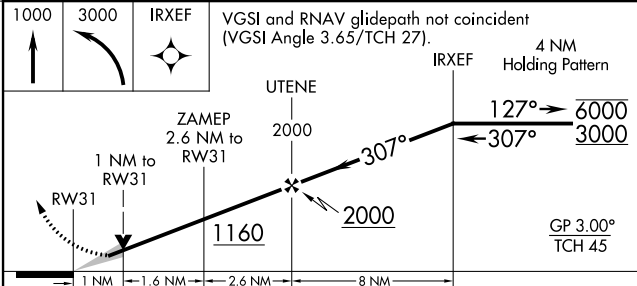
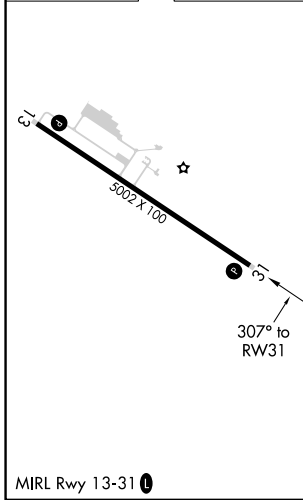
AWOS-3PT 119.35	AUGUSTA APP CON 126.8 270.3	CTAF 122.9
---------------------------	---------------------------------------	----------------------



SE-4, 22 FEB 2024 to 21 MAR 2024

SE-4, 22 FEB 2024 to 21 MAR 2024

ELEV 328	TDZE 319
----------	----------



CATEGORY		A	B	C	D
LPV	DA	569-1		250 (300-1)	
LNAV/VNAV	DA	720-1½		401 (400-1½)	
LNAV	MDA	720-1	401 (400-1)	720-1½	401 (400-1½)
CIRCLING		840-1	980-1	980-1¾	980-2
		512 (600-1)	652 (700-1)	652 (700-1¾)	652 (700-2)

LOUISVILLE, GEORGIA
 Orig-A 11AUG22

32°59'N-82°23'W

RNAV (GPS) RWY 31

LOUISVILLE MUNI (2J3)