

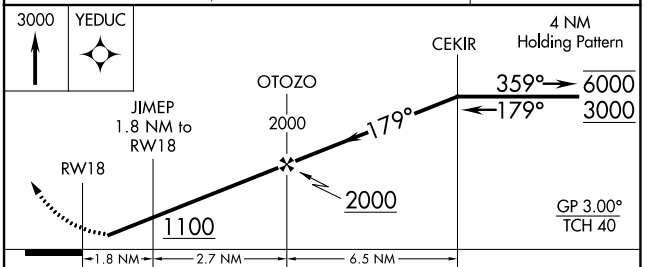
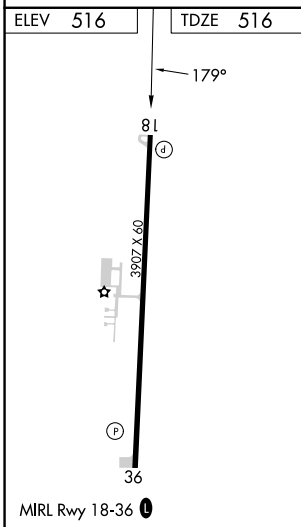
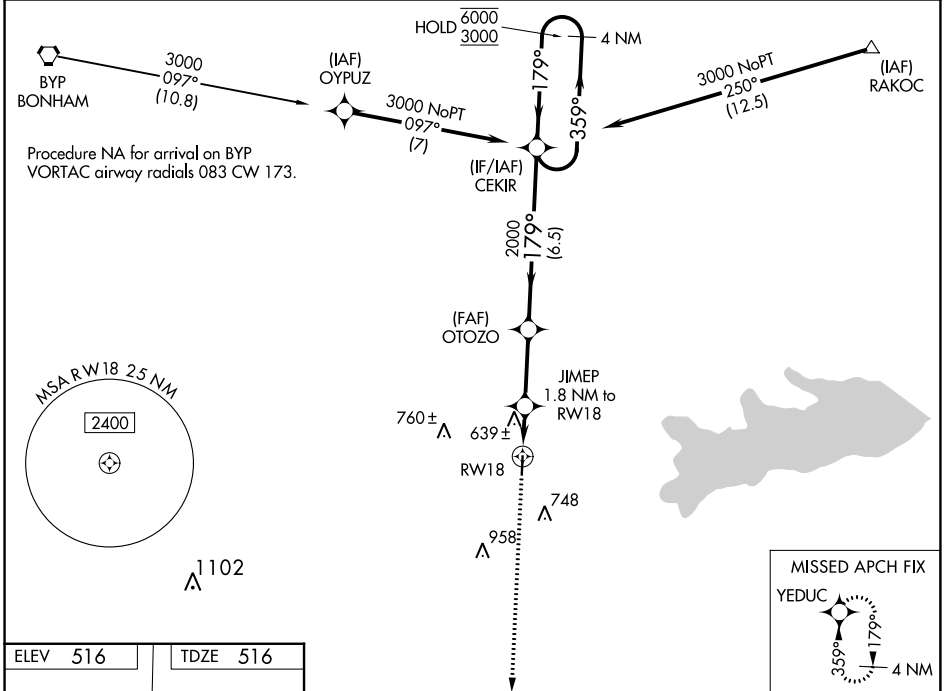
WAAS CH 53744 W18A	APP CRS 179°	Rwy Idg 3907 TDZE 516 Apt Elev 516
--	------------------------	---

RNAV (GPS) RWY 18

COMMERCE MUNI (2F7)

RNP APCH - GPS.	MISSED APPROACH: Climb to 3000 direct YEDUC and hold.
▼ Rwy 18 helicopter visibility reduction below 3/4 SM NA. ▲ NA Baro-VNAV NA. Use Greenville altimeter setting.	

GVT AWOS-3 133.425	FORT WORTH CENTER 127.6 254.3	CTAF 122.9 0
------------------------------	---	------------------------



CATEGORY	A	B	C	D
LPV DA	806-1	290 (300-1)		NA
LNAV/VNAV DA	806-1	290 (300-1)		NA
LNAV MDA	940-1	424 (500-1)		NA
CIRCLING	980-1 464 (500-1)	1140-1 624 (700-1)		NA

APP CRS	Rwy Idg	3907
359°	TDZE	512
	Apt Elev	516

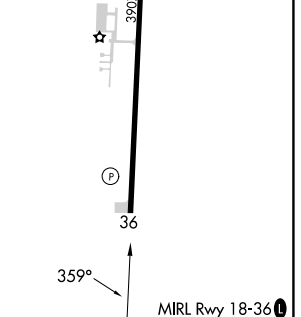
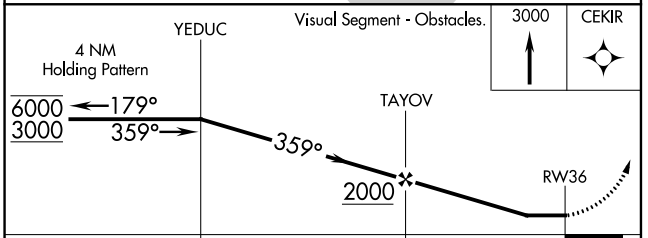
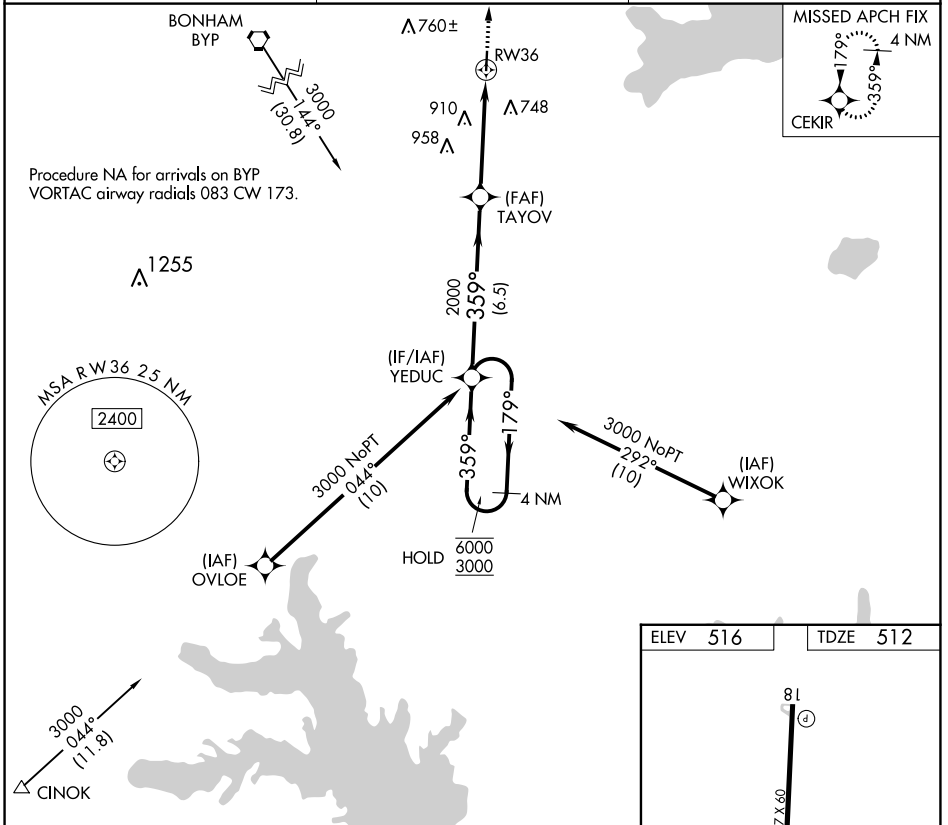
RNAV (GPS) RWY 36

COMMERCE MUNI (2F7)

RNP APCH.
 Use Greenville altimeter setting, when not received, use Sulphur Springs altimeter setting and increase all MDAs 20 feet. Rwy 36 helicopter visibility reduction below 3/4 SM NA.

MISSED APPROACH: Climb to 3000 direct CEKIR and hold.

GVT AWOS-3 133.425	FORT WORTH CENTER 127.6 254.3	CTAF 122.9
------------------------------	---	----------------------



CATEGORY	A	B	C	D
LNAV MDA	1140-1	628 (700-1)	NA	

SC-2, 22 FEB 2024 to 21 MAR 2024

SC-2, 22 FEB 2024 to 21 MAR 2024