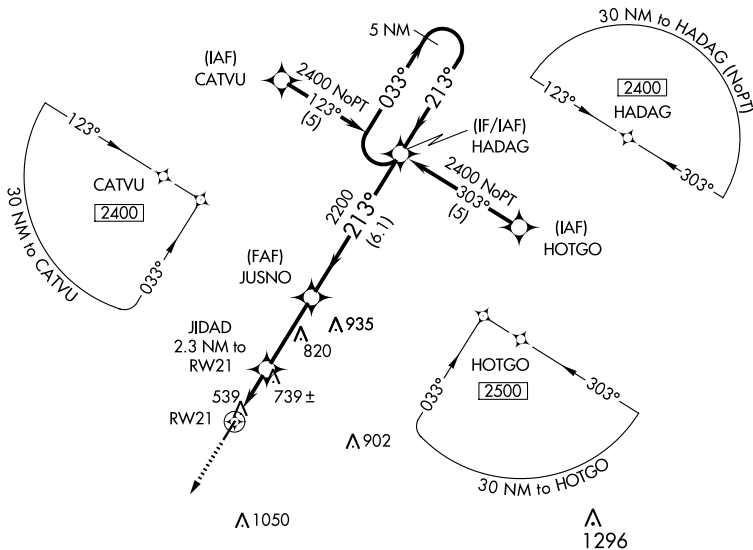


APP CRS	Rwy Idg <b>4400</b>
<b>213°</b>	TDZE <b>467</b>
	Apt Elev <b>467</b>

# RNAV (GPS) RWY 21

RIPLEY (25M)

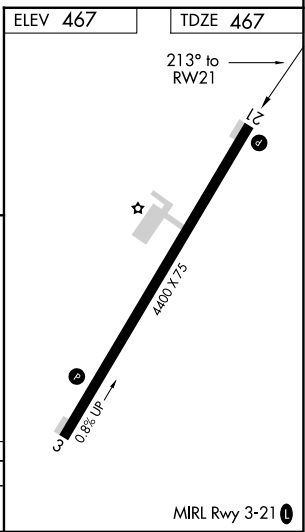
RNP APCH.		MISSED APPROACH: Climb to 2500 direct CEDAS and hold.
<p>▼ Use Corinth altimeter setting; when not received, use Tupelo altimeter setting and increase all MDA 40 feet, and increase LNAV Cat C visibility 1/4 mile. Procedure NA at night. Rwy 21 helicopter visibility reduction below 1 SM NA.</p>		
CRX AWOS-3PT <b>118.675</b>	MEMPHIS CENTER <b>135.9 260.6</b>	UNICOM <b>122.8 (CTAF) 0</b>



SC-4, 22 FEB 2024 to 21 MAR 2024

SC-4, 22 FEB 2024 to 21 MAR 2024

ELEV 467	TDZE 467
2500	CEDAS
VGSI and descent angles not coincident. (VGSI Angle 3.50/TCH 16)	
RWY 21: 2.3 NM to JIDAD, 2.9 NM to JUSNO, 6.1 NM to HADAG.	
Altitudes: 1220, 2200, 2400. Descent angles: 3.04°, 213°, 033°.	
CATEGORY	A B C D
LNAV MDA	1060-1 593 (600-1) 1060-1 1/2 593 (600-1 1/2) NA



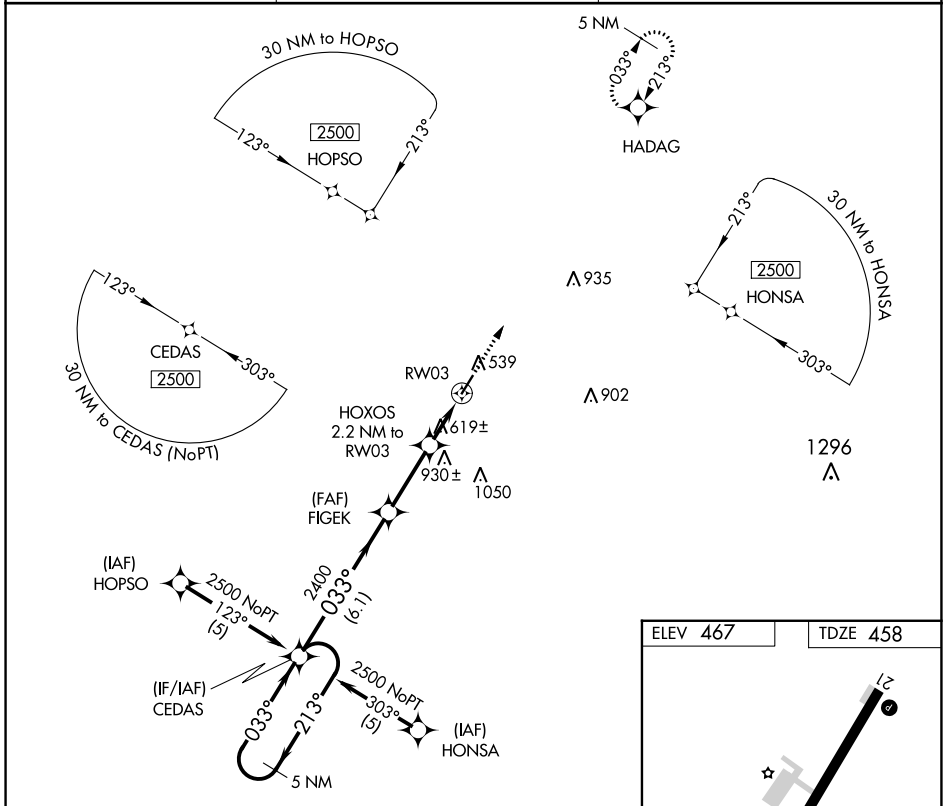
APP CRS	Rwy Idg	<b>4400</b>
<b>033°</b>	TDZE	<b>458</b>
	Apt Elev	<b>467</b>

# RNAV (GPS) RWY 3

RIPLEY (25M)

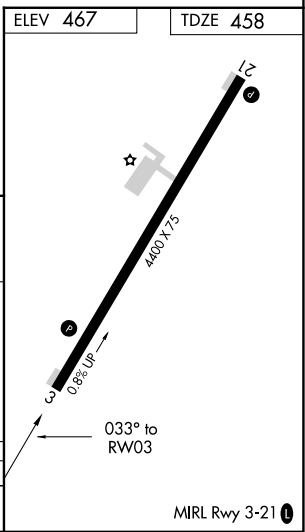
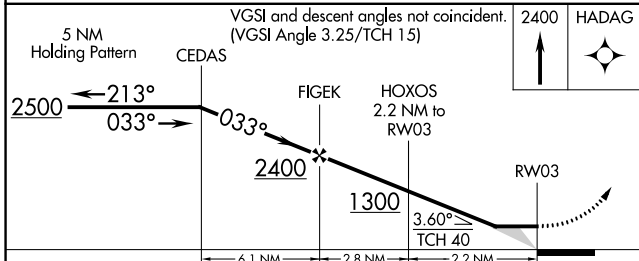
RNP APCH.	<p>Use Corinth altimeter setting, when not received use Tupelo altimeter setting and increase all MDA 40 feet, and increase LNAV Cat C visibility ¼ mile. Procedure NA at night. Rwy 3 helicopter visibility reduction below 1 SM NA.</p>	MISSED APPROACH: Climb to 2400 direct HADAG and hold.
-----------	---	---

CRX AWOS-3PT <b>118.675</b>	MEMPHIS CENTER <b>135.9 260.6</b>	UNICOM <b>122.8 (CTAF) 0</b>
--------------------------------	--------------------------------------	---------------------------------



SC-4, 22 FEB 2024 to 21 MAR 2024

SC-4, 22 FEB 2024 to 21 MAR 2024



CATEGORY	A	B	C	D
LNAV MDA	940-1	482 (500-1)	940-1¼ 482 (500-1¼)	NA

RIPLEY, MISSISSIPPI

AL-6339 (FAA)

21252

VORTAC HLI <b>112.4</b> Chan <b>71</b>	APP CRS <b>094°</b>	Rwy Idg TDZE Apt Elev <b>467</b>	<b>N/A</b> <b>N/A</b> <b>467</b>
--	------------------------	---	--

# VOR/DME-A RIPLEY (25M)

**▼** Use Corinth altimeter setting; when not received, use Tupelo altimeter setting and increase all MDAs 40 feet, and visibility Cat C ¼ SM.  
**▲ NA** Procedure NA at night. Helicopter visibility reduction below 1 SM NA.

MISSED APPROACH: Climbing left turn to 3000 via heading 251° and HLI VORTAC R-094 to HLI VORTAC and hold.

CRX AWOS-3PT <b>118.675</b>	MEMPHIS CENTER <b>135.9 260.6</b>	UNICOM <b>122.8 (CTAF) 0</b>
--------------------------------	--------------------------------------	---------------------------------

Procedure NA for arrivals on HLI VORTAC  
airway radials 045 CW 112.

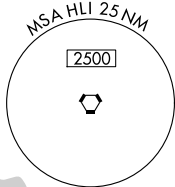
IAF  
HOLLY SPRINGS  
112.4 HLI [112.4]  
Chan 71

(IF)  
TIRED  
HLI [10]

▲ 935

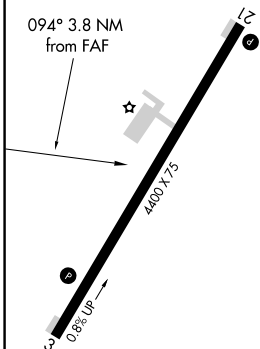
▲ 902

▲ 1050



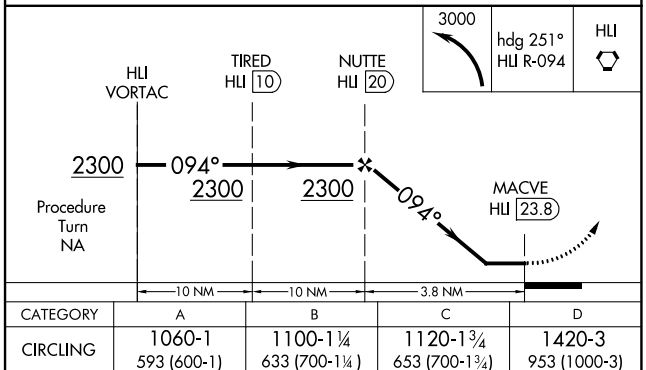
ELEV 467

094° 3.8 NM  
from FAF



MIRL Rwy 3-21 0

1126  
▲



RIPLEY, MISSISSIPPI  
Amdt 2B 09SEP21

34°43'N-89°01'W

# RIPLEY (25M) VOR/DME-A

SC-4, 22 FEB 2024 to 21 MAR 2024

SC-4, 22 FEB 2024 to 21 MAR 2024