

MEDINA, OHIO

AL-5763 (FAA)

20366

APP CRS	Rwy Idg	3556
271°	TDZE	1183
	Apt Elev	1190

RNAV (GPS) RWY 27

MEDINA MUNI (1G5)

RNP APCH.

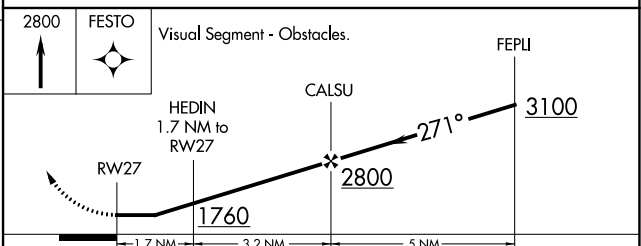
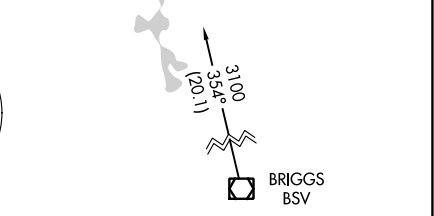
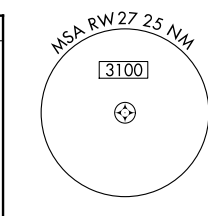
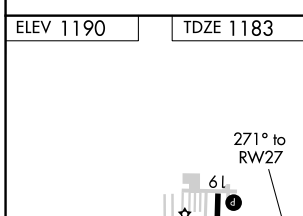
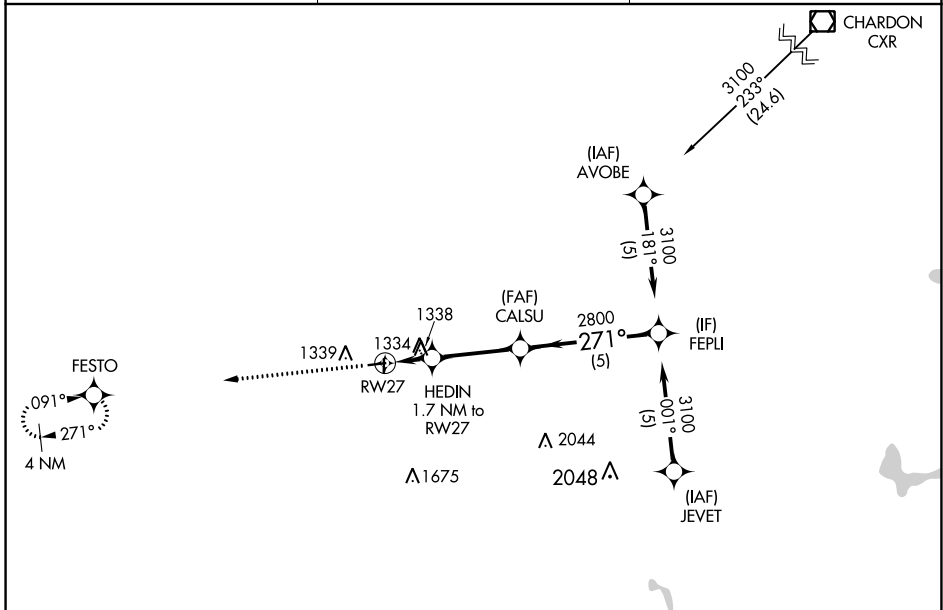
NA Rwy 27 helicopter visibility reduction below 3/4 SM NA. Use Cleveland-Hopkins Intl altimeter setting.

MISSED APPROACH: Climb to 2800 direct FESTO and hold.

CLE ASOS
127.85

CLEVELAND APP CON
125.35 346.325

UNICOM
123.0 (CTAF) 0



REIL Rwy 27 0	MIRL Rwy 9-27 and 1-19 0			
CATEGORY	A	B	C	D
RNAV MDA	1700-1	517 (600-1)	1700-1 3/8 517 (600-1 3/8)	NA

MEDINA, OHIO
Orig-C 07NOV19

41°08'N-81°46'W

RNAV (GPS) RWY 27

EC-2, 02 DEC 2021 to 30 DEC 2021

EC-2, 02 DEC 2021 to 30 DEC 2021

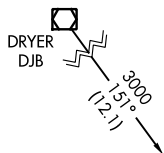
APP CRS 091°	Rwy Idg 3556 TDZE 1179 Apt Elev 1190
------------------------	---

RNAV (GPS) RWY 9

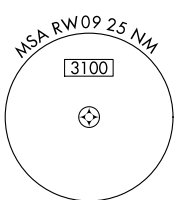
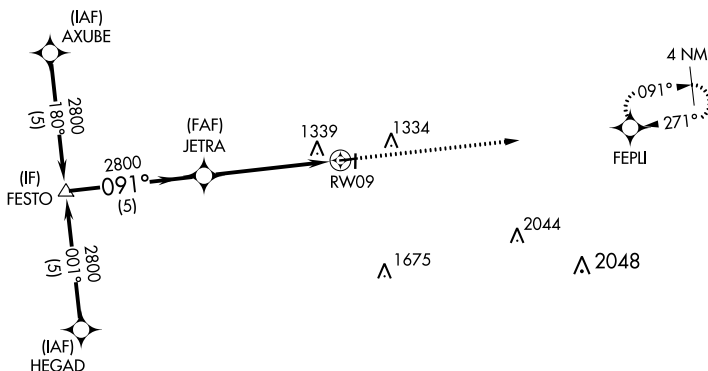
MEDINA MUNI (1G5)

RNP APCH.	<p>▼ Procedure NA at night. ▲ NA Rwy 9 helicopter visibility reduction below 1 SM NA. Use Cleveland-Hopkins Intl altimeter setting.</p>	MISSED APPROACH: Climb to 2800 direct FEPLI and hold.
-----------	---	---

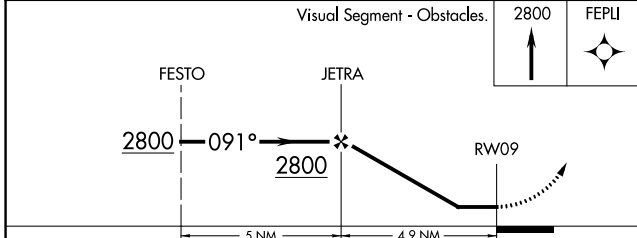
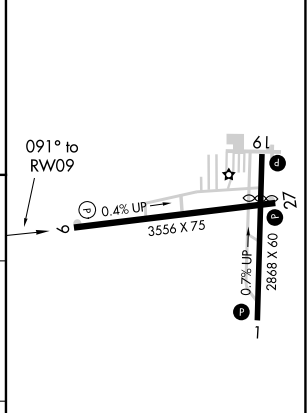
CLE ASOS 127.85	CLEVELAND APP CON 125.35 346.325	UNICOM 123.0 (CTAF) 0
---------------------------	--	---------------------------------



Procedure NA for arrival on DJB VOR/DME airway radials 074 CW 219.



ELEV 1190	TDZE 1179
-----------	-----------



CATEGORY	A	B	C	D
LNAV MDA	1700-1	521 (600-1)	1700-1½ 521 (600-1½)	NA

REIL Rwy 27 0
MIRL Rwy 9-27 and 1-19 0

EC-2, 02 DEC 2021 to 30 DEC 2021

EC-2, 02 DEC 2021 to 30 DEC 2021

VOR/DME ACO 114.4 Chan 91	APP CRS 278°	Rwy Idg TDZE 1183 Apt Elev 1190	3556
---	------------------------	---	-------------

VOR RWY 27

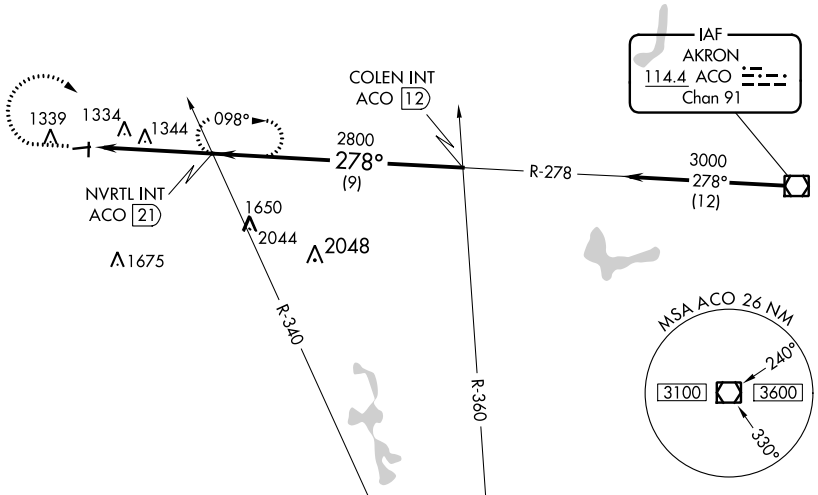
MEDINA MUNI (1G5)

NA Use Cleveland-Hopkins Intl altimeter setting. Circling Rwy 1, 9, 19 NA at night. Rwy 27 helicopter visibility reduction below 3/4 SM NA.

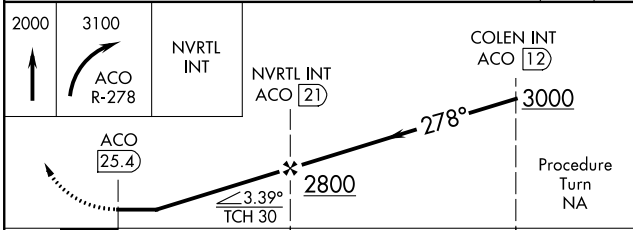
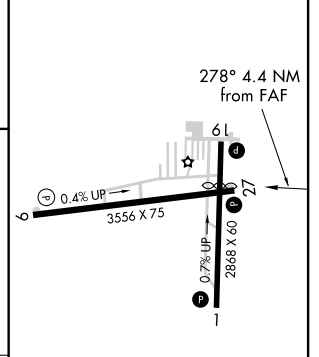
MISSED APPROACH: Climb to 2000 then climbing right turn to 3100 on ACO R-278 to NVRTL Int/21 DME and hold, continue climb-in-hold to 3100.

CLE ASOS 127.85	CLEVELAND APP CON 125.35 346.325	UNICOM 123.0 (CTAF) 0
---------------------------	--	---------------------------------

Procedure NA for arrivals on ACO VOR/DME airway radials 237 CW 323.



ELEV 1190	TDZE 1183
-----------	-----------



CATEGORY	A	B	C	D
S-27	1760-1 577 (600-1)	1760-1¼ 577 (600-1¼)	1760-1½ 577 (600-1½)	NA
CIRCLING	1800-1 610 (700-1)	1800-1¼ 610 (700-1¼)	1800-1¾ 610 (700-1¾)	NA

REIL Rwy 27 **0**
MIRL Rwy 9-27, 1-19 **0**

FAF to MAP 4.4 NM

Knots	60	90	120	150	180
Min:Sec	4:24	2:56	2:12	1:46	1:28