

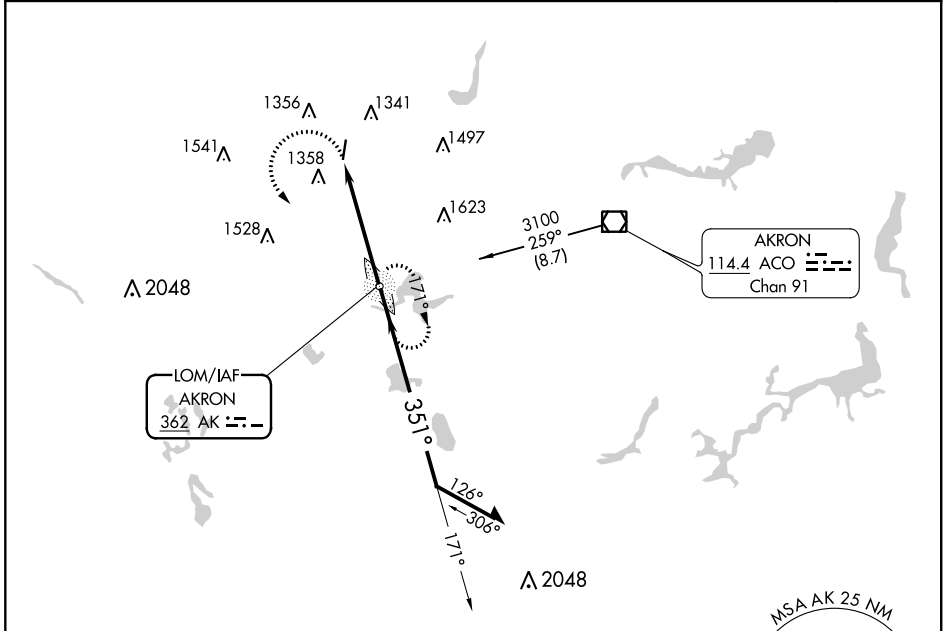
LOM AK	APP CRS	Rwy Idg	<b>3947</b>
<b>362</b>	<b>351°</b>	TDZE	<b>1129</b>
		Apt Elev	<b>1134</b>

# NDB RWY 1

KENT STATE UNIVERSITY (1G3)

**▼** When local altimeter setting not received, use Akron Fulton Intl altimeter setting.  
**▲ NA** Rwy 1 helicopter visibility reduction below 3/4 SM NA. MISSED APPROACH: Climbing left turn to 3100 direct AKRON LOM and hold.

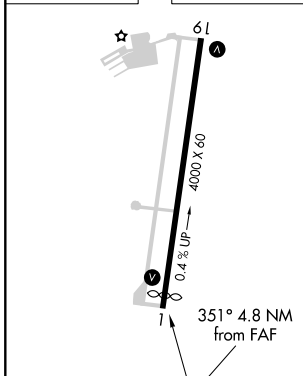
AWOS-2 <b>119.15</b>	AKR ASOS <b>126.825</b>	CLEVELAND APP CON* <b>118.6 371.875</b>	CLNC DEL <b>125.65</b>	UNICOM <b>122.725</b> (CTAF)	<b>122.9 0</b>
-------------------------	----------------------------	--	---------------------------	---------------------------------	----------------



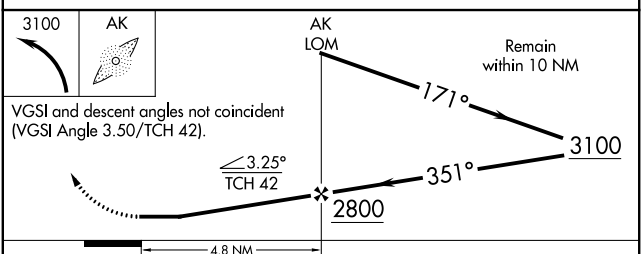
EC-2, 11 AUG 2022 to 08 SEP 2022

EC-2, 11 AUG 2022 to 08 SEP 2022

ELEV 1134	TDZE 1129
-----------	-----------



FAF to MAP 4.8 NM					
Knots	60	90	120	150	180
Min:Sec	4:48	3:12	2:24	1:55	1:36



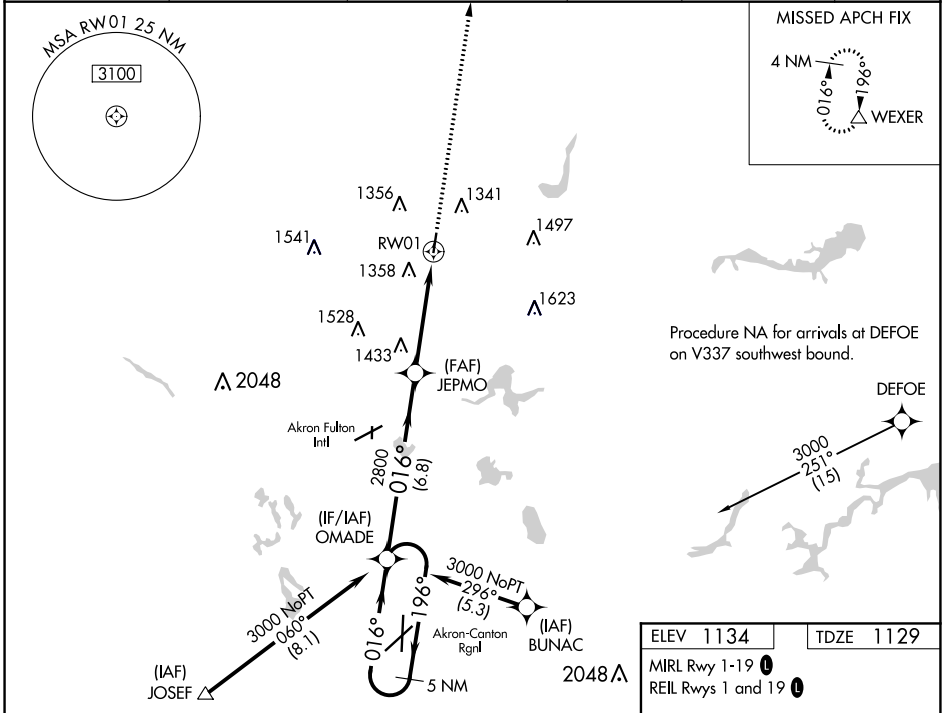
CATEGORY	A	B	C	D
S-1	1760-1	631 (700-1)	1760-1 7/8 631 (700-1 7/8)	NA
<b>C</b> CIRCLING	1760-1	626 (700-1)	1760-1 7/8 626 (700-1 7/8)	NA

WAAS CH <b>61001</b> <b>W01A</b>	APP CRS <b>016°</b>	Rwy Idg <b>3947</b> TDZE <b>1129</b> Apt Elev <b>1134</b>
--	------------------------	---

# RNAV (GPS) RWY 1

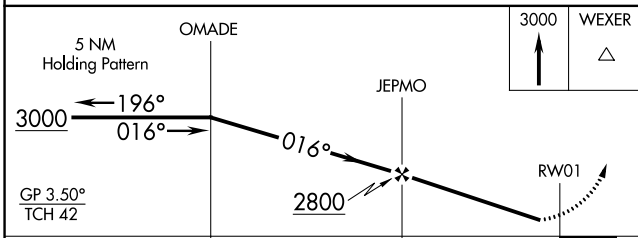
KENT STATE UNIVERSITY (1G3)

RNP APCH - GPS.		MISSED APPROACH: Climb to 3000 direct WEXER and hold.	
NA Rwy 1 helicopter visibility reduction below 3/4 SM NA. When local altimeter setting not received, use Akron Fulton Intl altimeter setting.			
AWOS-2 <b>119.15</b>	AKR ASOS <b>126.825</b>	CLEVELAND APP CON * <b>118.6 371.875</b>	CLNC DEL <b>125.65</b>
		UNICOM <b>122.725</b> (CTAF)	<b>122.9</b>

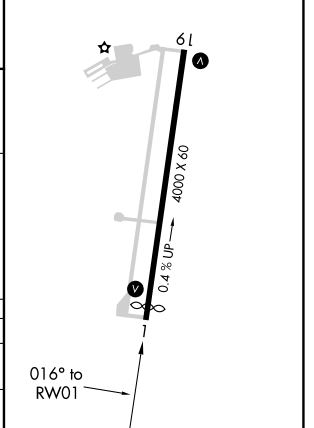


Procedure NA for arrivals at JOSEF on V72 southwest bound.

ELEV 1134	TDZE 1129
MIRL Rwy 1-19	REIL Rws 1 and 19



CATEGORY	A	B	C	D
LPV DA	1499-1 370 (400-1)			NA
LNAV MDA	1760-1	631 (700-1)	1760-1 3/4 631 (700-1 3/4)	NA



EC-2, 11 AUG 2022 to 08 SEP 2022

EC-2, 11 AUG 2022 to 08 SEP 2022

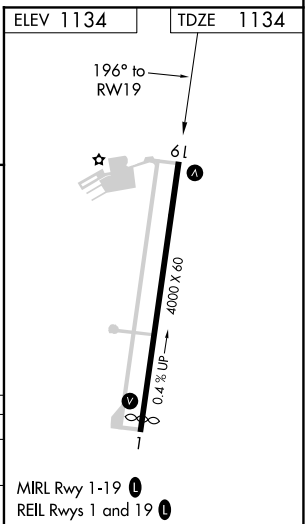
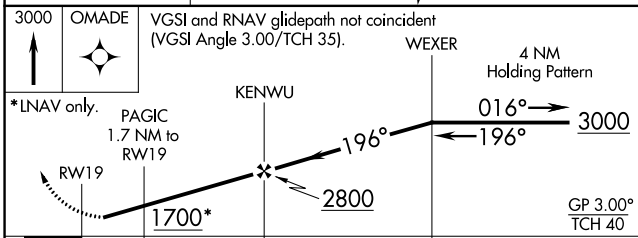
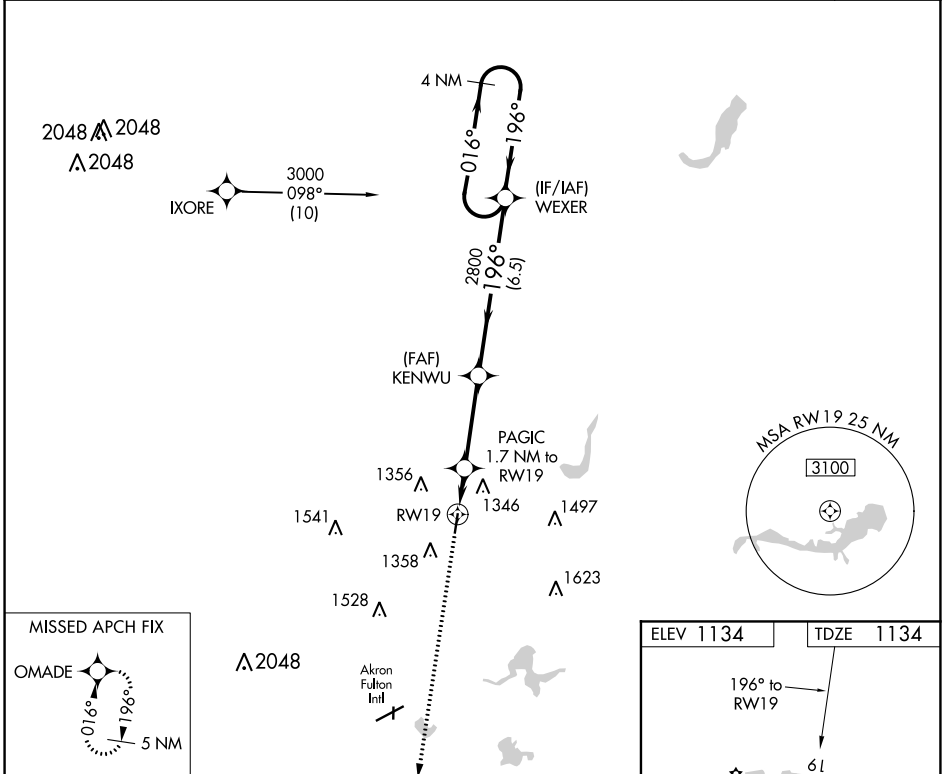
WAAS CH <b>65701</b> <b>W19A</b>	APP CRS <b>196°</b>	Rwy Idg <b>4000</b> TDZE <b>1134</b> Apt Elev <b>1134</b>
--	------------------------	---

# RNAV (GPS) RWY 19

KENT STATE UNIVERSITY (1G3)

RNP APCH - GPS.		MISSED APPROACH: Climb to 3000 direct OMADE and hold.	
Rwy 19 helicopter visibility reduction below 3/4 SM NA. When local altimeter setting not received, use Akron Fulton Intl altimeter setting.			

AWOS-2 <b>119.15</b>	AKR ASOS <b>126.825</b>	CLEVELAND APP CON * <b>118.6 371.875</b>	CLNC DEL <b>125.65</b>	UNICOM <b>122.725</b> (CTAF)	<b>122.9</b>
-------------------------	----------------------------	---	---------------------------	---------------------------------	--------------



CATEGORY	A	B	C	D
LPV DA	1443-1 309 (400-1)			NA
LNAV MDA	1580-1 446 (500-1)		1580-1 1/4 446 (500-1 1/4)	NA

EC-2, 11 AUG 2022 to 08 SEP 2022

EC-2, 11 AUG 2022 to 08 SEP 2022

VOR/DME ACO <b>114.4</b> Chan <b>91</b>	APP CRS <b>289°</b>	Rwy Idg TDZE Apt Elev <b>1134</b>	<b>N/A</b> <b>N/A</b> <b>1134</b>
---	------------------------	---	---

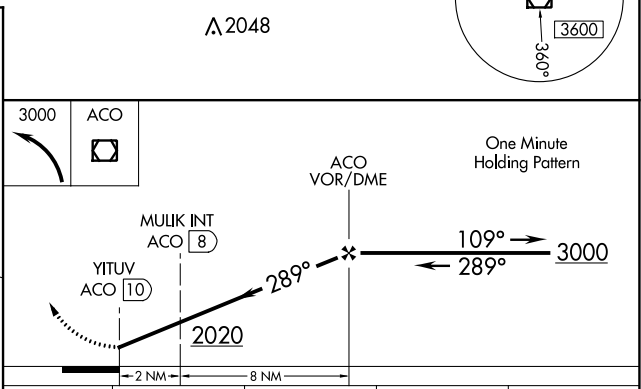
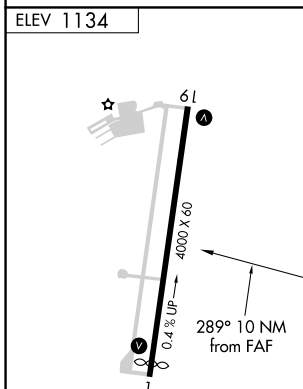
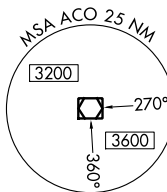
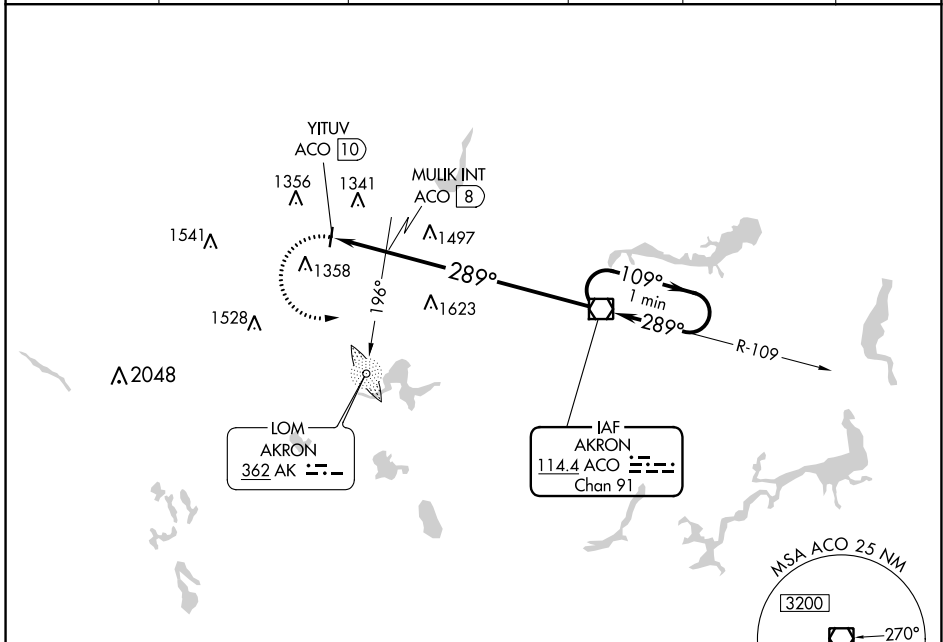
# VOR-A

KENT STATE UNIVERSITY (1G3)

**▼** When local altimeter setting not received, use Akron Fulton  
**▲** NA Init altimeter setting.

MISSED APPROACH: Climbing left turn to 3000 direct ACO VOR/DME and hold.

AWOS-2 <b>119.15</b>	AKR ASOS <b>126.825</b>	CLEVELAND APP CON * <b>118.6 371.875</b>	CLNC DEL <b>125.65</b>	UNICOM <b>122.725</b> (CTAF)	<b>122.9 0</b>
-------------------------	----------------------------	---	---------------------------	---------------------------------	----------------



CATEGORY	A	B	C	D
<b>C</b> CIRCLING	2020-1¼	886 (900-1¼)	2020-2¾ 886 (900-2¾)	NA
MULIK FIX MINIMUMS (ADF OR DME REQUIRED)				
<b>C</b> CIRCLING	1760-1	626 (700-1)	1760-1¾ 626 (700-1¾)	NA

FAF to MAP 10 NM					
Knots	60	90	120	150	180
Min:Sec	10:00	6:40	5:00	4:00	3:20

# VOR-A

EC-2, 11 AUG 2022 to 08 SEP 2022

EC-2, 11 AUG 2022 to 08 SEP 2022