

WAAS CH <b>77726</b> <b>W02A</b>	APP CRS <b>019°</b>	Rwy Idg TDZE Apt Elev	<b>4001</b> <b>966</b> <b>972</b>
----------------------------------------	------------------------	-----------------------------	-----------------------------------------

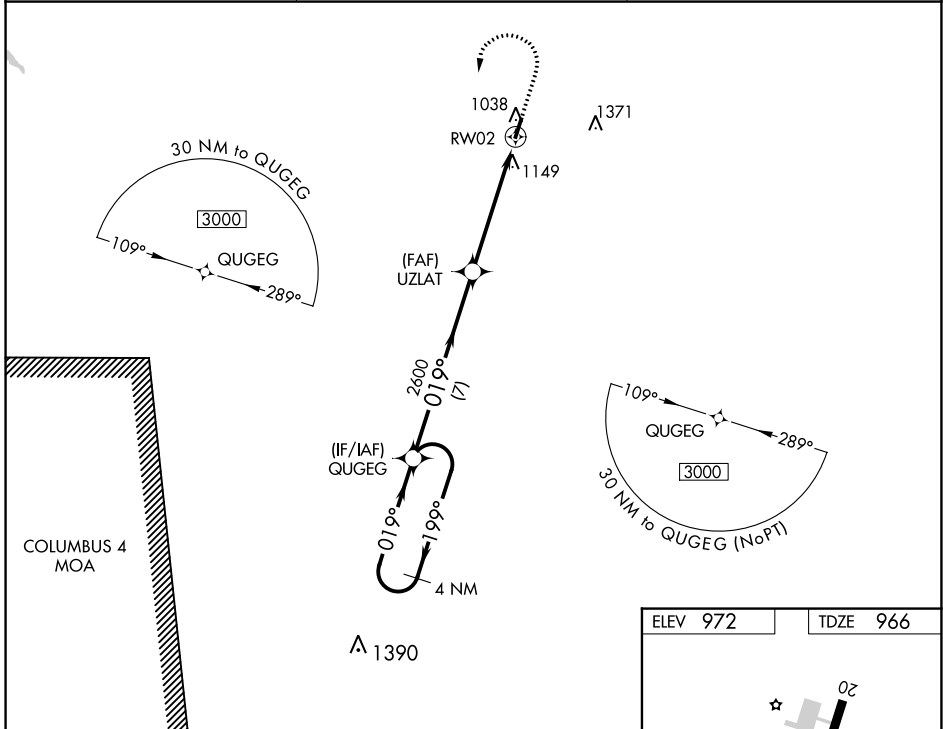
# RNAV (GPS) RWY 2

PAUL BRIDGES FLD (ØM3)

**▽** DME/DME RNP-0.3 NA. Use Lawrenceburg altimeter setting, when not received, use Muscle Shoals altimeter setting and increase all MDA 120 feet; increase LP and LNAV Cat C visibility ½ SM and Circling Cat C visibility ½ SM. Procedure NA at night. Rwy 2, 20 helicopter visibility reduction NA.

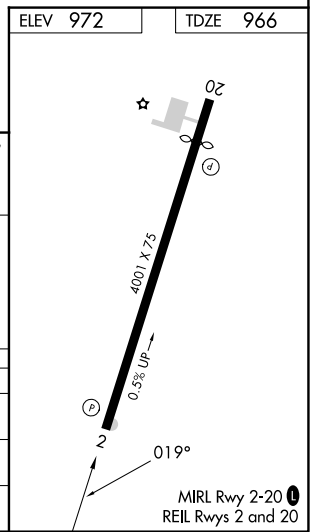
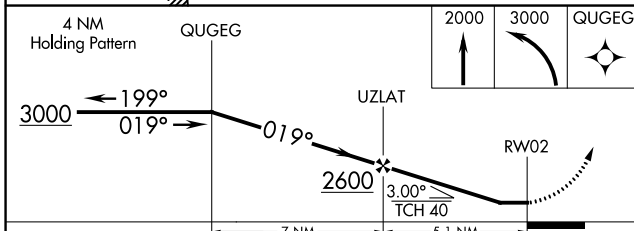
**▲** NA MISSED APPROACH: Climb to 2000 then climbing left turn to 3000 direct QUGEG and hold.

2M2 AWOS-3 <b>120.175</b>	MEMPHIS CENTER <b>125.85 379.25</b>	UNICOM <b>122.8 (CTAF) 0</b>
------------------------------	----------------------------------------	---------------------------------



SE-1, 22 FEB 2024 to 21 MAR 2024

SE-1, 22 FEB 2024 to 21 MAR 2024



CATEGORY	A	B	C	D
LP MDA	1520-1	554 (600-1)	1520-1½ 554 (600-1½)	NA
LNAV MDA	1520-1	554 (600-1)	1520-1½ 554 (600-1½)	NA
CIRCLING	1580-1	608 (700-1)	1740-2¼ 768 (800-2¼)	NA