

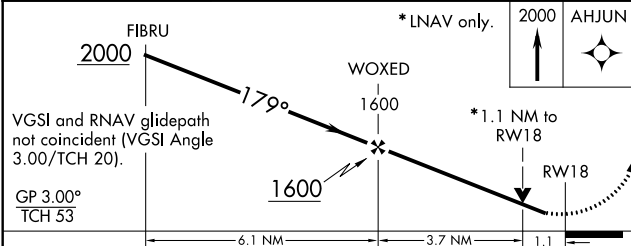
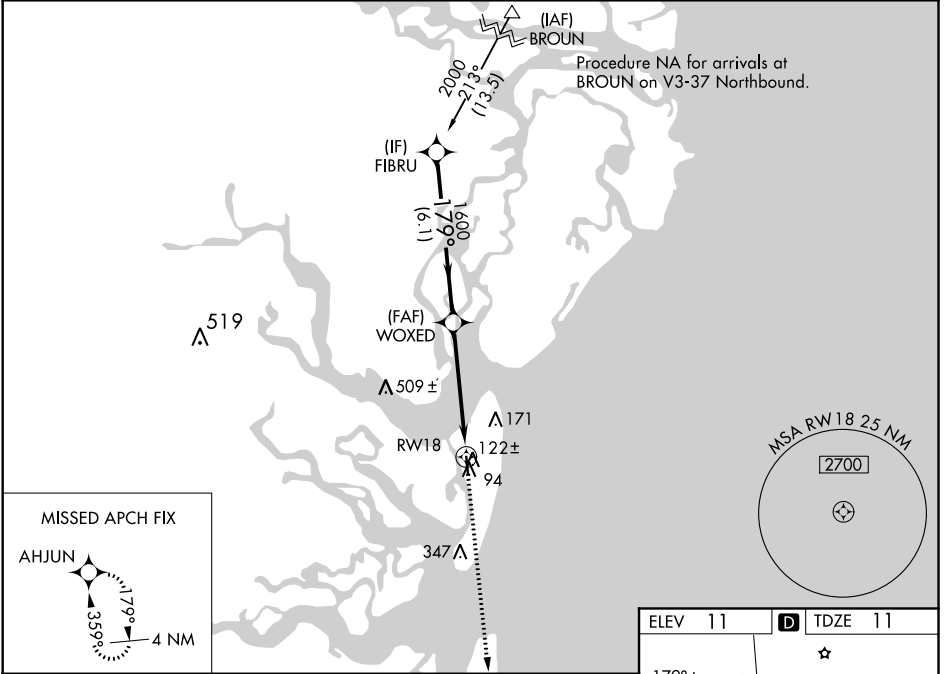
WAAS CH 61222 W18A	APP CRS 179°	Rwy Idg 3575 TDZE 11 Apt Elev 11
----------------------------------------	------------------------	-------------------------------------------------------------

RNAV (GPS) RWY 18

JEKYLL ISLAND (Ø9J)

RNP APCH	<p>⚠ Circling Rwy 36 NA at night. Baro-VNAV NA. Use St Simons Island altimeter setting, when not received use Jacksonville Intl altimeter setting; increase LPV DA to 324 feet and LNAV/VNAV DA to 377 feet and all visibilities 1/2 SM; increase all MDAs 100 feet.</p>	<p>MISSED APPROACH: Climb to 2000 direct AHJUN and hold.</p>
----------	--------------------------------------------------------------------------------------------------------------------------------------------------------------------------------------------------------------------------------------------------------------------------	--------------------------------------------------------------

SSI ASOS 120.025	JACKSONVILLE CENTER 126.75 277.4	UNICOM 123.05 (CTAF) Ø
----------------------------	--------------------------------------------	----------------------------------



ELEV 11	D TDZE 11
<p>179° to RW18</p>	
<p>MIRL Rwy 18-36 Ø</p>	

CATEGORY	A	B	C	D
LPV DA	224-3/4	213 (300-3/4)		NA
LNAV/VNAV DA	277-7/8	266 (300-7/8)		NA
LNAV MDA	400-1	389 (400-1)		NA
CIRCLING	540-1	529 (600-1)		NA

SE-4, 07 OCT 2021 to 04 NOV 2021

SE-4, 07 OCT 2021 to 04 NOV 2021

WAAS CH 69422 W36A	APP CRS 359°	Rwy Idg 3575 TDZE 11 Apt Elev 11
----------------------------------------	------------------------	-------------------------------------------------------------

RNAV (GPS) RWY 36

JEKYLL ISLAND (Ø9J)

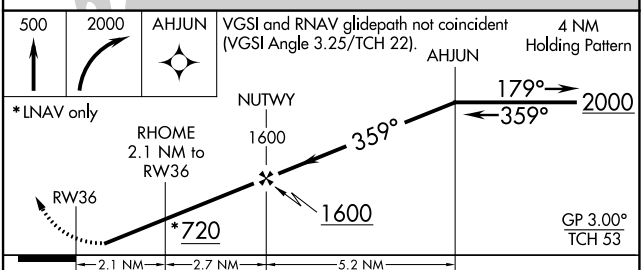
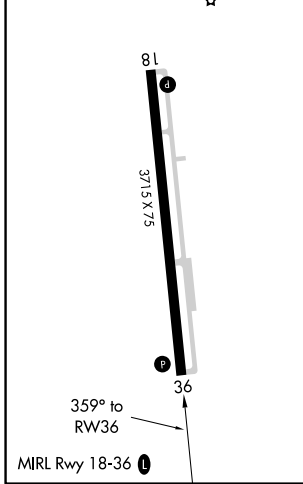
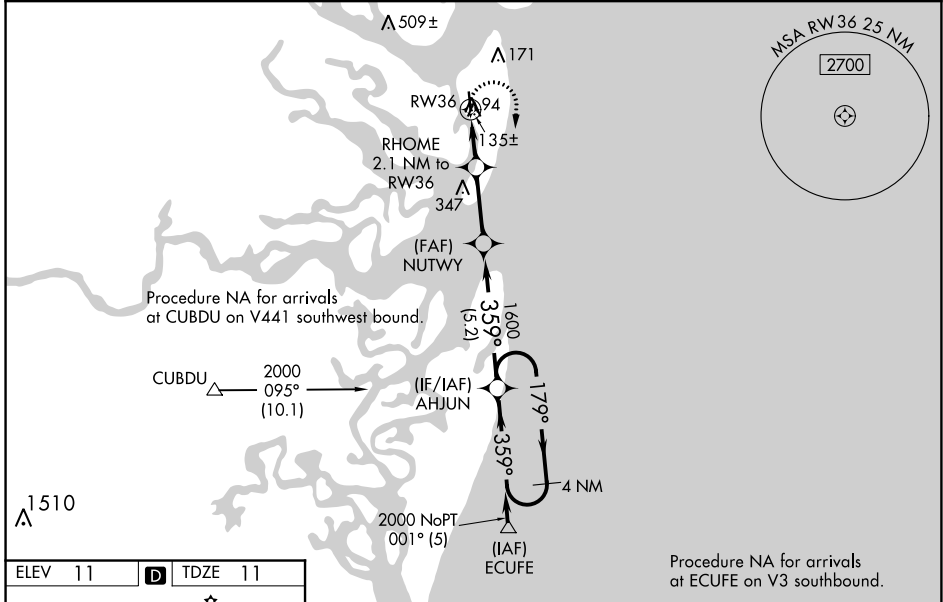
NA Baro-VNAV NA when using Jacksonville Intl altimeter setting. For uncompensated Baro-VNAV systems, LNAV/VNAV NA below -15°C (5°F) or above 54°C (130°F). When VGSI inop, straight-in/Circling Rwy 36 procedure NA at night. DME/DME RNP-0.3 NA. Visibility reduction by helicopters NA. Use St Simons Island altimeter setting, when not received use Jacksonville Intl altimeter setting and increase LPV DA to 377 feet; increase LNAV/VNAV DA to 400 feet and all visibilities ½ SM; increase all MDAs 100 feet.

MISSED APPROACH:
Climb to 500 then climbing right turn to 2000 direct AHJUN and hold.

SSI ASOS
120.025

JACKSONVILLE CENTER
126.75 277.4

UNICOM
123.05 (CTAF) Ø



CATEGORY	A	B	C	D
LPV DA	300-1	289 (300-1)		NA
LNAV/VNAV DA	323-1	312 (400-1)		NA
LNAV MDA	420-1	409 (500-1)		NA
CIRCLING	540-1	529 (600-1)		NA

SE-4, 07 OCT 2021 to 04 NOV 2021

SE-4, 07 OCT 2021 to 04 NOV 2021

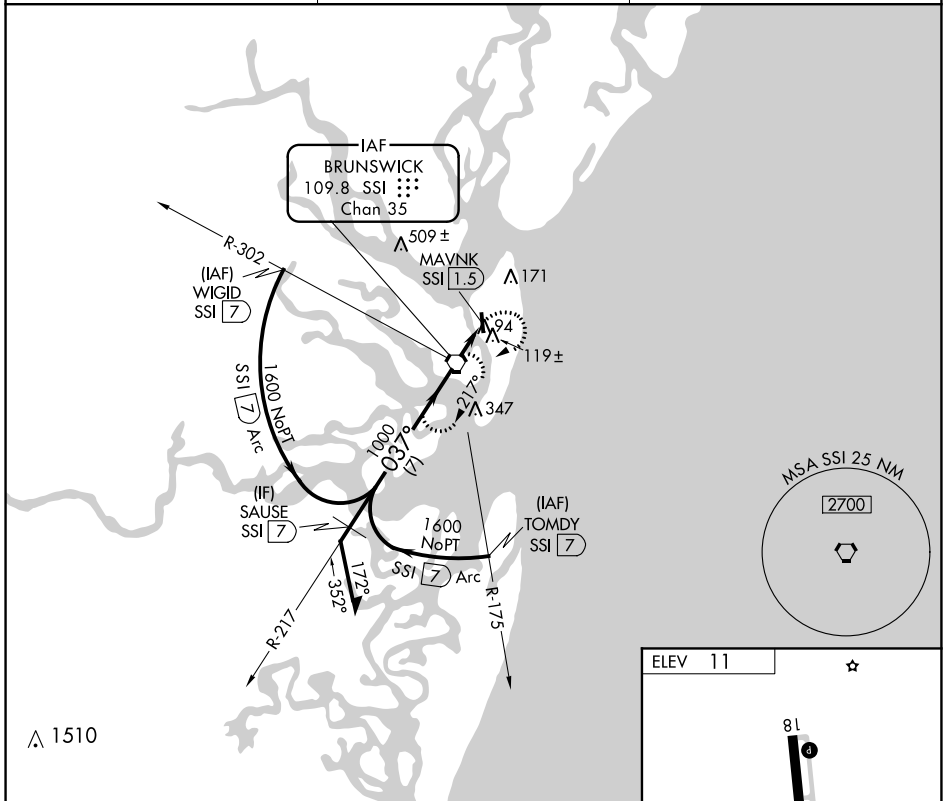
VORTAC SSI 109.8 Chan 35	APP CRS 037°	Rwy Idg TDZE Apt Elev	N/A N/A 11
----------------------------------------------	------------------------	-----------------------------	---------------------------------------

VOR-A
JEKYLL ISLAND (Ø9J)

NA Use St Simons Island altimeter setting; when not received, use Jacksonville Intl altimeter setting and increase MDA 100 feet.

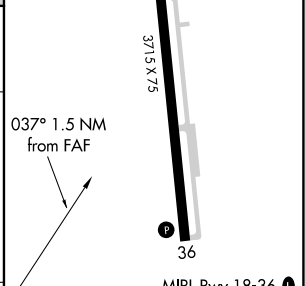
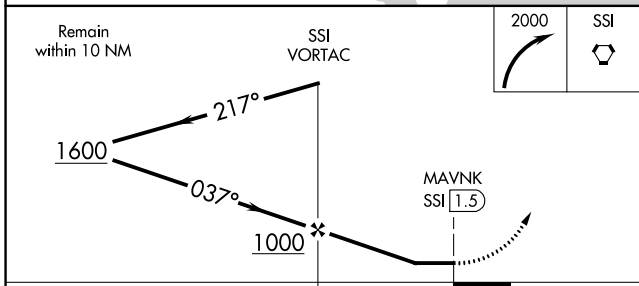
MISSED APPROACH: Climbing right turn to 2000 direct SSI VORTAC and hold, continue climb-in-hold to 2000.

SSI ASOS 120.025	JACKSONVILLE CENTER 126.75 277.4	UNICOM 123.05 (CTAF) Ø
----------------------------	--------------------------------------------	----------------------------------



SE-4, 07 OCT 2021 to 04 NOV 2021

SE-4, 07 OCT 2021 to 04 NOV 2021



CATEGORY	A	B	C	D	FAF to MAP 1.5 NM												
CIRCLING	540-1	529 (600-1)	NA		<table border="1"> <tr> <td>Knots</td> <td>60</td> <td>90</td> <td>120</td> <td>150</td> <td>180</td> </tr> <tr> <td>Min:Sec</td> <td>1:30</td> <td>1:00</td> <td>0:45</td> <td>0:36</td> <td>0:30</td> </tr> </table>	Knots	60	90	120	150	180	Min:Sec	1:30	1:00	0:45	0:36	0:30
Knots	60	90	120	150	180												
Min:Sec	1:30	1:00	0:45	0:36	0:30												